



SZABO SCANDIC

Part of Europa Biosite

Produktinformation



Forschungsprodukte & Biochemikalien



Zellkultur & Verbrauchsmaterial



Diagnostik & molekulare Diagnostik



Laborgeräte & Service

Weitere Information auf den folgenden Seiten!
See the following pages for more information!



Lieferung & Zahlungsart

siehe unsere [Liefer- und Versandbedingungen](#)

Zuschläge

- Mindermengenzuschlag
- Trockeneiszuschlag
- Gefahrgutzuschlag
- Expressversand

SZABO-SCANDIC Handels GmbH

Quellenstraße 110, A-1100 Wien

T. +43(0)1 489 3961-0

F. +43(0)1 489 3961-7

mail@szabo-scandic.com

www.szabo-scandic.com

[linkedin.com/company/szaboscandic](https://www.linkedin.com/company/szaboscandic)



FGF1 monoclonal antibody (M01), clone 3F5

Catalog # : H00002246-M01

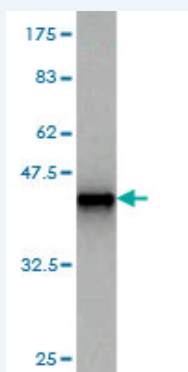
規格 : [100 ug]

[List All](#)

Specification

Product Description:	Mouse monoclonal antibody raised against a partial recombinant FGF1.
Immunogen:	FGF1 (AAH32697, 46 a.a. ~ 155 a.a) partial recombinant protein with GST tag. MW of the GST tag alone is 26 KDa.
Sequence:	VDGTRDRSDQHQLQLSAESVGEVIKSTETGQYLAMDTDGLLYGSQTP NEECLFLERLEENHYNTYISKKHAEKNWFVGLKKNGSCKRGPRTHYGQK AILFLPLPVSSD
Host:	Mouse
Reactivity:	Human
Isotype:	IgG1 Kappa

Quality Control Testing: Antibody Reactive Against Recombinant Protein.



Western Blot detection against Immunogen (37.73 KDa) .

Storage Buffer: In 1x PBS, pH 7.4

Storage Instruction: Store at -20°C or lower. Aliquot to avoid repeated freezing and thawing.

MSDS: [Download](#)

Datasheet: [Download](#)

Publication Reference

1. Acidic Fibroblast Growth Factor (FGF) Potentiates Glial-mediated Neurotoxicity by Activating FGFR2 IIIb Protein.
Lee M, Kang Y, Suk K, Schwab C, Yu S, McGeer PL. J Biol Chem. 2011 Dec 2;286(48):41230-45. Epub 2011 Oct 11.

Applications

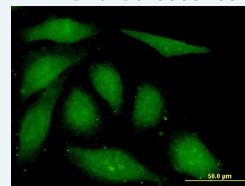
Western Blot (Recombinant protein)

[Protocol Download](#)

Application Image

Western Blot (Recombinant protein)

Immunofluorescence

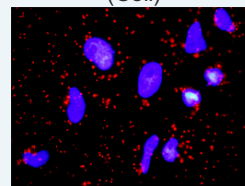


[enlarge](#)

Sandwich ELISA (Recombinant protein)

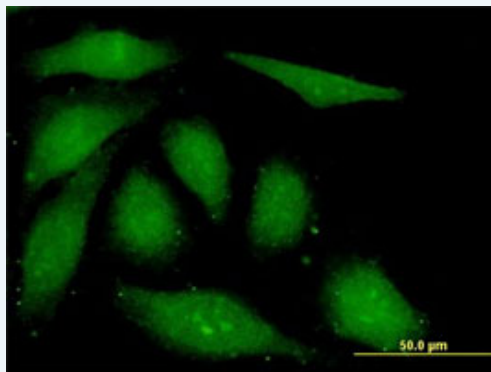
ELISA

In situ Proximity Ligation Assay (Cell)



[enlarge](#)

Immunofluorescence



[enlarge this image](#)

Immunofluorescence of monoclonal antibody to FGF1 on HeLa cell . [antibody concentration 10 ug/ml]

 [Protocol Download](#)

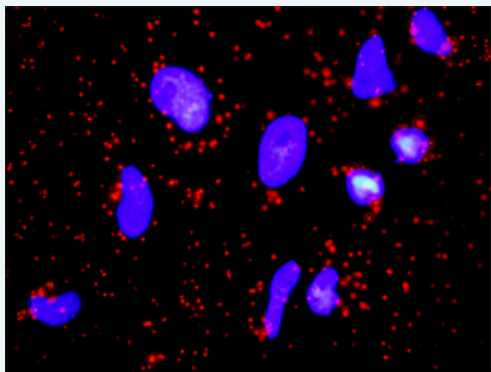
Sandwich ELISA (Recombinant protein)

Detection limit for recombinant GST tagged FGF1 is approximately 3ng/ml as a capture antibody.

 [Protocol Download](#)

ELISA

In situ Proximity Ligation Assay (Cell)



Proximity Ligation Analysis of protein-protein interactions between FGFR2 and FGF1. HeLa cells were stained with anti-FGFR2 rabbit purified polyclonal 1:1200 and anti-FGF1 mouse monoclonal antibody 1:50. Each red dot represents the detection of protein-protein interaction complex, and nuclei were counterstained with DAPI (blue).

Gene Information

Entrez GeneID: [2246](#)

GeneBank [BC032697](#)
Accession#:

Protein [AAH32697](#)
Accession#:

Gene Name: FGF1

Gene Alias: AFGF, ECGF, ECGF-beta, ECGFA, ECGFB, FGF-alpha, FGFA, GLIO703, HBGF1

Gene Description: fibroblast growth factor 1 (acidic)

Omim ID: [131220](#)

Gene Ontology: [Hyperlink](#)

Gene Summary: The protein encoded by this gene is a member of the fibroblast growth

factor (FGF) family. FGF family members possess broad mitogenic and cell survival activities, and are involved in a variety of biological processes, including embryonic development, cell growth, morphogenesis, tissue repair, tumor growth and invasion. This protein functions as a modifier of endothelial cell migration and proliferation, as well as an angiogenic factor. It acts as a mitogen for a variety of mesoderm- and neuroectoderm-derived cells in vitro, thus is thought to be involved in organogenesis. Multiple alternatively spliced variants encoding different isoforms have been described. [provided by RefSeq

Other Designations: OTTHUMP00000066028,OTTHUMP00000066030,OTTHUMP00000066031,OTTHUMP00000174675,endothelial cell growth factor, alpha,endothelial cell growth factor, beta,heparin-binding growth factor 1

Interactome



Gene Pathway

[MAPK signaling pathway](#) [Melanoma](#) [Pathways in cancer](#) [Regulation of actin cytoskeleton](#)

Related Disease

[Alzheimer Disease](#) [Alzheimer disease](#) [Arthritis](#), [Psoriatic](#) [Cardiovascular Diseases](#) [Celiac Disease](#) [Chorioamnionitis](#) [Cleft Lip](#) [Cleft Palate](#) [Diabetes Complications](#) [Endometriosis](#) [Fetal Membranes](#), [Premature Rupture](#) [Genetic Predisposition to Disease](#) [Hepatitis C](#), [Chronic Hyperparathyroidism](#), [Secondary Hypertension](#) [Intracranial Aneurysm](#) [Metabolic Syndrome X](#) [Multiple Sclerosis](#) [Neoplasms](#)

... see more