



# SZABO SCANDIC

Part of Europa Biosite

## Produktinformation



Forschungsprodukte & Biochemikalien



Zellkultur & Verbrauchsmaterial



Diagnostik & molekulare Diagnostik



Laborgeräte & Service

Weitere Information auf den folgenden Seiten!  
See the following pages for more information!



### Lieferung & Zahlungsart

siehe unsere [Liefer- und Versandbedingungen](#)

### Zuschläge

- Mindermengenzuschlag
- Trockeneiszuschlag
- Gefahrgutzuschlag
- Expressversand

### SZABO-SCANDIC HandelsgmbH

Quellenstraße 110, A-1100 Wien

T. +43(0)1 489 3961-0

F. +43(0)1 489 3961-7

[mail@szabo-scandic.com](mailto:mail@szabo-scandic.com)

[www.szabo-scandic.com](http://www.szabo-scandic.com)

[linkedin.com/company/szaboscandic](https://www.linkedin.com/company/szaboscandic) 

## FGF1 monoclonal antibody (M03), clone 1F9

Catalog # : H00002246-M03

規格 : [ 100 ug ]

[List All](#)

### Specification

**Product Description:** Mouse monoclonal antibody raised against a partial recombinant FGF1.

**Immunogen:** FGF1 (AAH32697, 46 a.a. ~ 155 a.a) partial recombinant protein with GST tag. MW of the GST tag alone is 26 KDa.

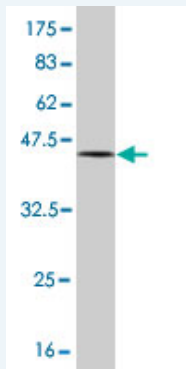
**Sequence:** VDGTDRSDQHIQLQLSAESVGEVYIKSTETGQYLAMDTDGLLYGSQTP  
NEECLFLERLEENHYNTYISKKHAEKNWVGLKKNKNGSCKRGPRTYHGQK  
AILFLPLPVSSD

**Host:** Mouse

**Reactivity:** Human

**Isotype:** IgG1 Kappa

**Quality Control Testing:** Antibody Reactive Against Recombinant Protein.



Western Blot detection against Immunogen (37.73 KDa) .

**Storage Buffer:** In 1x PBS, pH 7.4

**Storage Instruction:** Store at -20°C or lower. Aliquot to avoid repeated freezing and thawing.

**MSDS:** [Download](#)

**Datasheet:** [Download](#)

### Applications

**Western Blot (Recombinant protein)**

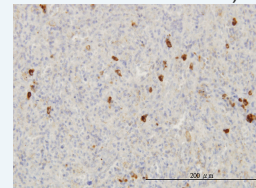
[Protocol Download](#)

**Immunohistochemistry (Formalin/PFA-fixed paraffin-embedded sections)**

### Application Image

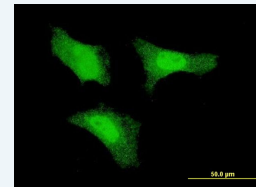
**Western Blot (Recombinant protein)**

**Immunohistochemistry (Formalin/PFA-fixed paraffin-embedded sections)**



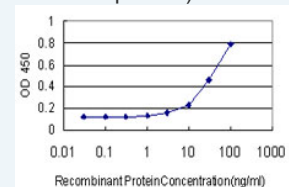
[enlarge](#)

**Immunofluorescence**



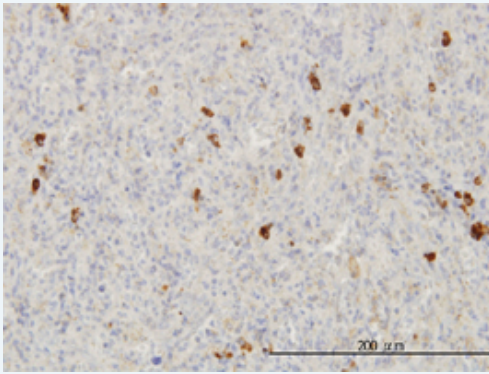
[enlarge](#)

**Sandwich ELISA (Recombinant protein)**



[enlarge](#)

ELISA

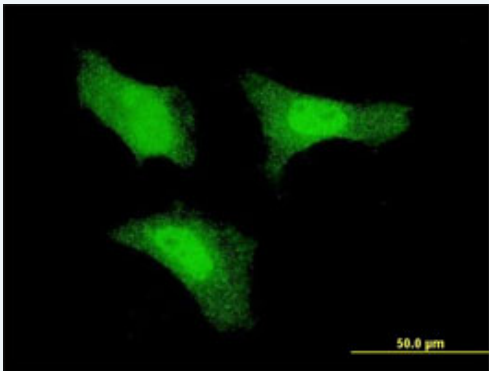


[enlarge this image](#)

Immunoperoxidase of monoclonal antibody to FGF1 on formalin-fixed paraffin-embedded human spleen. [antibody concentration 3 ug/ml]

[Protocol Download](#)

### Immunofluorescence

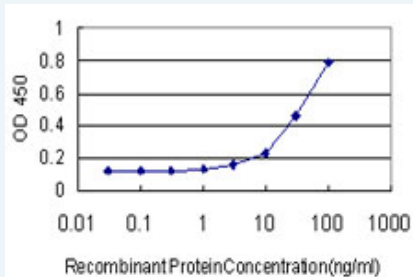


[enlarge this image](#)

Immunofluorescence of monoclonal antibody to FGF1 on HeLa cell . [antibody concentration 10 ug/ml]

[Protocol Download](#)

### Sandwich ELISA (Recombinant protein)



Detection limit for recombinant GST tagged FGF1 is approximately 3ng/ml as a capture antibody.

[Protocol Download](#)

### ELISA

#### Gene Information

Entrez GeneID: [2246](#)

GeneBank [BC032697](#)  
Accession#:

Protein [AAH32697](#)  
Accession#:

Gene Name: FGF1

Gene Alias: AFGF, ECGF, ECGF-beta, ECGFA, ECGFB, FGF-alpha, FGFA, GLIO703, HBGF1

Gene fibroblast growth factor 1 (acidic)

## Description:

**Omim ID:** [131220](#)

**Gene Ontology:** [Hyperlink](#)

**Gene Summary:** The protein encoded by this gene is a member of the fibroblast growth factor (FGF) family. FGF family members possess broad mitogenic and cell survival activities, and are involved in a variety of biological processes, including embryonic development, cell growth, morphogenesis, tissue repair, tumor growth and invasion. This protein functions as a modifier of endothelial cell migration and proliferation, as well as an angiogenic factor. It acts as a mitogen for a variety of mesoderm- and neuroectoderm-derived cells in vitro, thus is thought to be involved in organogenesis. Multiple alternatively spliced variants encoding different isoforms have been described. [provided by RefSeq]

**Other Designations:** OTTHUMP00000066028,OTTHUMP00000066030,OTTHUMP00000066031,OTTHUMP00000174675,endothelial cell growth factor, alpha,endothelial cell growth factor, beta,heparin-binding growth factor 1

## Interactome



## Gene Pathway

[MAPK signaling pathway](#) [Melanoma Pathways in cancer](#) [Regulation of actin cytoskeleton](#)

## Related Disease

[Alzheimer Disease](#) [Alzheimer disease](#) [Arthritis, Psoriatic](#) [Cardiovascular Diseases](#)  
[Celiac Disease](#) [Chorioamnionitis](#) [Cleft Lip](#) [Cleft Palate](#) [Diabetes Complications](#)  
[Endometriosis](#) [Fetal Membranes, Premature Rupture](#) [Genetic Predisposition to Disease](#)  
[Hepatitis C, Chronic](#) [Hyperparathyroidism, Secondary](#) [Hypertension](#) [Intracranial Aneurysm](#)  
[Metabolic Syndrome X](#) [Multiple Sclerosis](#) [Neoplasms](#)

... see more