



# SZABO SCANDIC

Part of Europa Biosite

## Produktinformation



Forschungsprodukte & Biochemikalien



Zellkultur & Verbrauchsmaterial



Diagnostik & molekulare Diagnostik



Laborgeräte & Service

Weitere Information auf den folgenden Seiten!  
See the following pages for more information!



### Lieferung & Zahlungsart

siehe unsere [Liefer- und Versandbedingungen](#)

### Zuschläge

- Mindermengenzuschlag
- Trockeneiszuschlag
- Gefahrgutzuschlag
- Expressversand

### SZABO-SCANDIC HandelsgmbH

Quellenstraße 110, A-1100 Wien

T. +43(0)1 489 3961-0

F. +43(0)1 489 3961-7

[mail@szabo-scandic.com](mailto:mail@szabo-scandic.com)

[www.szabo-scandic.com](http://www.szabo-scandic.com)

[linkedin.com/company/szaboscandic](https://www.linkedin.com/company/szaboscandic) 

## FGFR1 monoclonal antibody (M03), clone 5E9

Catalog # : H00002260-M03

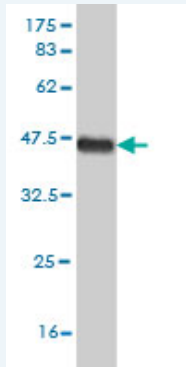
規格 : [ 100 ug ]

[List All](#)

### Specification

<b>Product Description:</b>	Mouse monoclonal antibody raised against a partial recombinant FGFR1.
<b>Immunogen:</b>	FGFR1 (AAH15035, 31 a.a. ~ 150 a.a) partial recombinant protein with GST tag. MW of the GST tag alone is 26 KDa.
<b>Sequence:</b>	AQPWGAPVEVESFLVHPGDLLQLRCRLRDDVQSSINWLRDGVQLAESNR TRITGEEVEVQDSVPADSGLYACVTSSPSGSDTTYFSVNVSDALPSSD DDDDDDSSSEKETDNTKPNRMP
<b>Host:</b>	Mouse
<b>Reactivity:</b>	Human
<b>Isotype:</b>	IgG2a Kappa

**Quality Control Testing:** Antibody Reactive Against Recombinant Protein.



Western Blot detection against Immunogen (38.83 KDa) .

**Storage Buffer:** In 1x PBS, pH 7.4

**Storage Instruction:** Store at -20°C or lower. Aliquot to avoid repeated freezing and thawing.

**MSDS:** [Download](#)

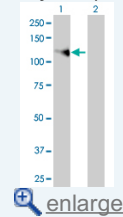
**Datasheet:** [Download](#)

### Applications

Western Blot (Transfected lysate)

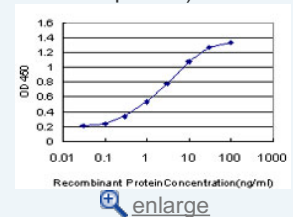
### Application Image

Western Blot (Transfected lysate)



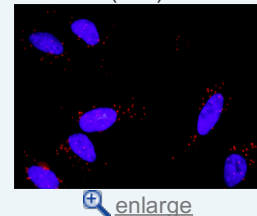
Western Blot (Recombinant protein)

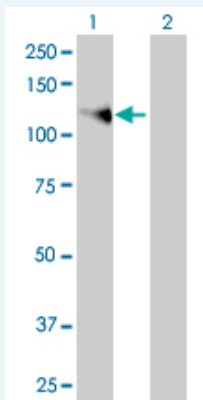
Sandwich ELISA (Recombinant protein)



ELISA

In situ Proximity Ligation Assay (Cell)





Western Blot analysis of FGFR1 expression in transfected 293T cell line by FGFR1 monoclonal antibody (M03), clone 5E9.

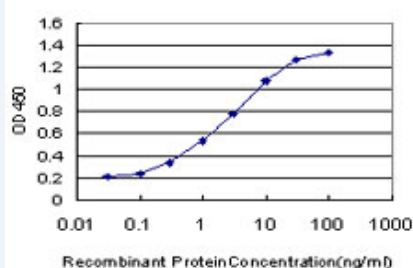
Lane 1: FGFR1 transfected lysate(92 KDa).  
Lane 2: Non-transfected lysate.

[Protocol Download](#)

### Western Blot (Recombinant protein)

[Protocol Download](#)

### Sandwich ELISA (Recombinant protein)

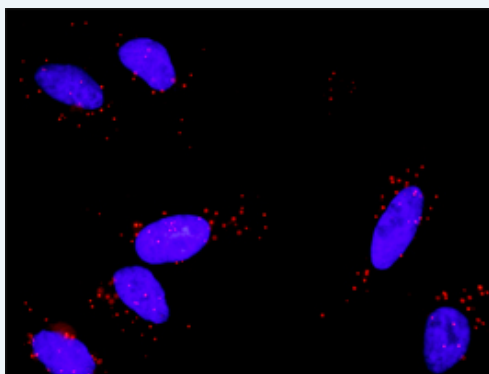


Detection limit for recombinant GST tagged FGFR1 is approximately 0.03ng/ml as a capture antibody.

[Protocol Download](#)

### ELISA

### *In situ* Proximity Ligation Assay (Cell)



Proximity Ligation Analysis of protein-protein interactions between FGF1 and FGFR1. HeLa cells were stained with anti-FGF1 rabbit purified polyclonal 1:1200 and anti-FGFR1 mouse monoclonal antibody 1:50. Each red dot represents the detection of protein-protein interaction complex, and nuclei were counterstained with DAPI (blue).

### Gene Information

Entrez GeneID: [2260](#)

GeneBank [BC015035](#)

Accession#:

Protein [AAH15035](#)

**Accession#:**

**Gene Name:** FGFR1

**Gene Alias:** BFGFR,CD331,CEK,FGFBR,FLG,FLJ99988,FLT2,HBGFR,KAL2,N-SAM

**Gene Description:** fibroblast growth factor receptor 1

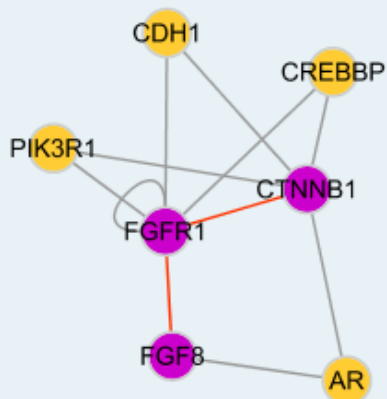
**Omim ID:** [101600](#), [123150](#), [136350](#), [147950](#)

**Gene Ontology:** [Hyperlink](#)

**Gene Summary:** The protein encoded by this gene is a member of the fibroblast growth factor receptor (FGFR) family, where amino acid sequence is highly conserved between members and throughout evolution. FGFR family members differ from one another in their ligand affinities and tissue distribution. A full-length representative protein consists of an extracellular region, composed of three immunoglobulin-like domains, a single hydrophobic membrane-spanning segment and a cytoplasmic tyrosine kinase domain. The extracellular portion of the protein interacts with fibroblast growth factors, setting in motion a cascade of downstream signals, ultimately influencing mitogenesis and differentiation. This particular family member binds both acidic and basic fibroblast growth factors and is involved in limb induction. Mutations in this gene have been associated with Pfeiffer syndrome, Jackson-Weiss syndrome, Antley-Bixler syndrome, osteoglophonic dysplasia, and autosomal dominant Kallmann syndrome 2. Chromosomal aberrations involving this gene are associated with stem cell myeloproliferative disorder and stem cell leukemia lymphoma syndrome. Alternatively spliced variants which encode different protein isoforms have been described; however, not all variants have been fully characterized. [provided by RefSeq]

**Other Designations:** FMS-like tyrosine kinase 2,OTTHUMP00000190874,OTTHUMP00000190878,OTTHUMP00000190879,OTTHUMP00000190881,basic fibroblast growth factor receptor 1,fms-related tyrosine kinase 2,fms-related tyrosine kinase-2,heparin-binding growth factor receptor,hydroxyaryl

**Interactome**



**Gene Pathway**

[Adherens junction](#) [MAPK signaling pathway](#) [Melanoma](#) [Pathways in cancer](#) [Prostate cancer](#)

[Regulation of actin cytoskeleton](#)

### **Related Disease**

---

[Abnormalities, Multiple](#) [Acrocephalosyndactylia](#) [Alzheimer Disease](#) [Alzheimer disease](#)  
[Amenorrhea](#) [Anodontia](#) [Breast cancer](#) [Breast Neoplasms](#) [Bronchial Hyperreactivity](#)  
[Cardiovascular Diseases](#) [Chromosome Aberrations](#) [Chromosome Disorders](#) [Cleft Lip](#)  
[Cleft Palate](#) [Craniofacial Dysostosis](#) [Craniosynostoses](#) [Diabetes Complications](#)  
[Fractures, Bone](#) [Genetic Diseases, Inborn](#)

**... see more**

---

[服務條款](#) | [隱私權政策](#) | [著作及商標](#) | [網站地圖](#)

©2016 亞諾法生技股份有限公司 Abnova Corporation. 版權所有.