



SZABO SCANDIC

Part of Europa Biosite

Produktinformation



Forschungsprodukte & Biochemikalien



Zellkultur & Verbrauchsmaterial



Diagnostik & molekulare Diagnostik



Laborgeräte & Service

Weitere Information auf den folgenden Seiten!
See the following pages for more information!



Lieferung & Zahlungsart

siehe unsere [Liefer- und Versandbedingungen](#)

Zuschläge

- Mindermengenzuschlag
- Trockeneiszuschlag
- Gefahrgutzuschlag
- Expressversand

SZABO-SCANDIC HandelsgmbH

Quellenstraße 110, A-1100 Wien

T. +43(0)1 489 3961-0

F. +43(0)1 489 3961-7

mail@szabo-scandic.com

www.szabo-scandic.com

[linkedin.com/company/szaboscandic](https://www.linkedin.com/company/szaboscandic) 

GPC5 purified MaxPab mouse polyclonal antibody (B01P) MaxPab®

Catalog # : H00002262-B01P

規格 : [50 ug]

[List All](#)

Specification

Product Description: Mouse polyclonal antibody raised against a full-length human GPC5 protein.

Immunogen: GPC5 (NP_004457.1, 1 a.a. ~ 572 a.a) full-length human protein.

Sequence:
 MDAQTWPVGFRCLLLLLVGSARSEGVQTCEEVRKLFQWRLLGAVRG
 LPDSPRAGPDLQVCISKKPTCCTRKMEERYQIARQDMQQFLQTSSTL
 KFLISRNAAAFQETLETLIKQAENYTSILFCSTYRNMALAAAASVQEFFTD
 VGLYLFGADVNPPEEFVNRFFDSLFLVYNHLINPGVTDSSLEYSECIRMA
 RRDVSPFGNIPQRVMGQMGRSLLPSRTFLQALNLGIEVINTTDYLFHFSKE
 CSRALLKMQYCPHCQGLALTKPCMGYCLNVMRGCLAHMAELNPHWHA
 YIRSLLEELSDAMHGTYDIGHVLLNFHLLVNDVAVLQAHLNGQKLLQVNRIC
 GRPVRTPTQSPRCSFDQSKEKHGMKTTTRNSEETLANRRKEFINSLRLY
 RSFYGGGLADQLCANELAAADGLPCWNGEDIVKSYTQRVW/GNGIKAQSG
 NPEVKVKGIDPVINQIIDKLKHVVQLLQGRSPKPKDWELLQLGSGGGMVE
 QVSGDCDDDEDGCGGSGSGEVKRTLKITDWMPPDDMNFSDVKQIHQTD
 GSTLDTTGAGCAVATESMTFTLISVVMLLPGIW

Host: Mouse

Reactivity: Human, Rat

Quality Control Testing: Antibody reactive against mammalian transfected lysate.

Storage Buffer: In 1x PBS, pH 7.4

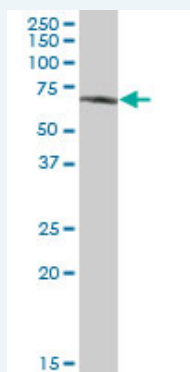
Storage Instruction: Store at -20°C or lower. Aliquot to avoid repeated freezing and thawing.

MSDS: [Download](#)

Datasheet: [Download](#)

Applications

Western Blot (Tissue lysate)

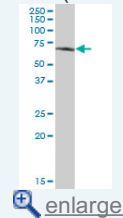


GPC5 MaxPab polyclonal antibody. Western Blot analysis of GPC5 expression in rat brain.

[Protocol Download](#)

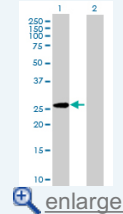
Application Image

Western Blot (Tissue lysate)



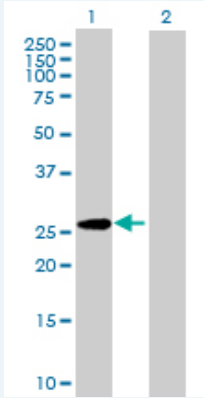
[enlarge](#)

Western Blot (Transfected lysate)



[enlarge](#)

Western Blot (Transfected lysate)



Western Blot analysis of GPC5 expression in transfected 293T cell line ([H00002262-T01](#)) by GPC5 MaxPab polyclonal antibody.

Lane 1: GPC5 transfected lysate(62.92 KDa).

Lane 2: Non-transfected lysate.

 [Protocol Download](#)

Gene Information

Entrez GeneID: [2262](#)

GeneBank [NM_004466.3](#)
Accession#:

Protein [NP_004457.1](#)
Accession#:

Gene Name: GPC5

Gene Alias: -

Gene [glypican 5](#)
Description:

Omim ID: [602446](#)

Gene Ontology: [Hyperlink](#)

Gene Summary: Cell surface heparan sulfate proteoglycans are composed of a membrane-associated protein core substituted with a variable number of heparan sulfate chains. Members of the glypican-related integral membrane proteoglycan family (GRIPS) contain a core protein anchored to the cytoplasmic membrane via a glycosyl phosphatidylinositol linkage. These proteins may play a role in the control of cell division and growth regulation. [provided by RefSeq]

Other [OTTHUMP00000018551,bA93M14.1,glypican proteoglycan 5](#)
Designations:

Related Disease

[Colitis, Ulcerative](#) [Crohn Disease](#) [Crohn's disease](#) [Death, Sudden, Cardiac](#)
[Diabetes Mellitus, Type 2](#) [Disease Progression](#) [Disease Susceptibility](#)
[Genetic Predisposition to Disease](#) [Heart Diseases](#) [Lung Neoplasms](#) [Multiple Sclerosis](#)
[Multiple Sclerosis, Relapsing-Remitting](#) [Overweight](#) [Rectal Fistula](#) [Recurrence](#)
[Tobacco Use Disorder](#)