



# SZABO SCANDIC

Part of Europa Biosite

## Produktinformation



Forschungsprodukte & Biochemikalien



Zellkultur & Verbrauchsmaterial



Diagnostik & molekulare Diagnostik



Laborgeräte & Service

Weitere Information auf den folgenden Seiten!  
See the following pages for more information!



### Lieferung & Zahlungsart

siehe unsere [Liefer- und Versandbedingungen](#)

### Zuschläge

- Mindermengenzuschlag
- Trockeneiszuschlag
- Gefahrgutzuschlag
- Expressversand

### SZABO-SCANDIC HandelsgmbH

Quellenstraße 110, A-1100 Wien

T. +43(0)1 489 3961-0

F. +43(0)1 489 3961-7

[mail@szabo-scandic.com](mailto:mail@szabo-scandic.com)

[www.szabo-scandic.com](http://www.szabo-scandic.com)

[linkedin.com/company/szaboscandic](https://www.linkedin.com/company/szaboscandic) 

**GPC5 purified MaxPab rabbit polyclonal antibody (D01P)** MaxPab®

Catalog # : H00002262-D01P

規格 : [ 100 ug ]

[List All](#)

**Specification**

**Product Description:** Rabbit polyclonal antibody raised against a full-length human GPC5 protein.

**Immunogen:** GPC5 (NP\_004457.1, 1 a.a. ~ 572 a.a) full-length human protein.

**Sequence:**  
 MDAQTWPVGFRCLLLLLVGSARSEGVQTCEEVRKLFQWRLLGAVRG  
 LPDSPRAGPDLQVCISKKPTCCTRKMEERYQIARQDMQQFLQTSSTL  
 KFLISRNAAAFQETLETLIKQAENYTSILFCSTYRNMALAAAASVQEFFTD  
 VGLYLFGADVNPPEEFVNRFFDSLFLVYNHLINPGVTDSSLEYSECIRMA  
 RRDVSPFGNIPQRVMGQMGRSLLPSRTFLQALNLGIEVINTTDYLFHFSKE  
 CSRALLKMQYCPHCQGLALTKPCMGYCLNVMRGCLAHMAELNPHWHA  
 YIRSLEELSDAMHGTYDIGHVLLNFHLLVNDVAVLQAHLNGQKLLQVNRIC  
 GRPVRTPTQSPRCSFDQSKEKHGMKTTTRNSEETLANRRKEFINSLRLY  
 RSFYGGGLADQLCANELAAADGLPCWNGEDIVKSYTQRVW/GNGIKAQSG  
 NPEVKVKGIDPVINQIIDKLKHVVQLLQGRSPKPKDWELLQLGSGGGMVE  
 QVSGDCDDEDGCGGSGSGEVKRTLKITDWMPPDDMNFSDVKQIHQTD  
 GSTLDTTGAGCAVATESMTFTLISVVMLLPGIW

**Host:** Rabbit

**Reactivity:** Human

**Quality Control Testing:** Antibody reactive against mammalian transfected lysate.

**Storage Buffer:** In 1x PBS, pH 7.4

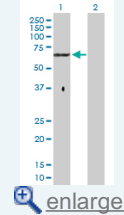
**Storage Instruction:** Store at -20°C or lower. Aliquot to avoid repeated freezing and thawing.

**MSDS:** [Download](#)

**Datasheet:** [Download](#)

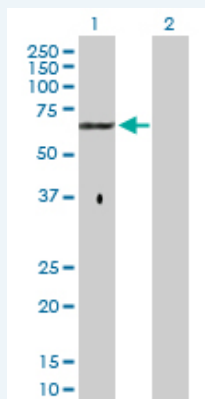
**Application Image**

Western Blot (Transfected lysate)



**Applications**

Western Blot (Transfected lysate)



Western Blot analysis of GPC5 expression in transfected 293T cell line ([H00002262-T02](#)) by GPC5 MaxPab polyclonal antibody.

Lane 1: GPC5 transfected lysate(63.70 KDa).  
Lane 2: Non-transfected lysate.

 [Protocol Download](#)

---

## Gene Information

---

**Entrez GeneID:** [2262](#)

---

**GeneBank  
Accession#:** [NM\\_004466.3](#)

---

**Protein  
Accession#:** [NP\\_004457.1](#)

---

**Gene Name:** GPC5

---

**Gene Alias:** -

---

**Gene  
Description:** glypican 5

---

**Omim ID:** [602446](#)

---

**Gene Ontology:** [Hyperlink](#)

---

**Gene Summary:** Cell surface heparan sulfate proteoglycans are composed of a membrane-associated protein core substituted with a variable number of heparan sulfate chains. Members of the glypican-related integral membrane proteoglycan family (GRIPS) contain a core protein anchored to the cytoplasmic membrane via a glycosyl phosphatidylinositol linkage. These proteins may play a role in the control of cell division and growth regulation. [provided by RefSeq]

---

**Other  
Designations:** OTTHUMP00000018551,bA93M14.1,glypican proteoglycan 5

---

## Related Disease

---

[Colitis, Ulcerative](#) [Crohn Disease](#) [Crohn's disease](#) [Death, Sudden, Cardiac](#)  
[Diabetes Mellitus, Type 2](#) [Disease Progression](#) [Disease Susceptibility](#)  
[Genetic Predisposition to Disease](#) [Heart Diseases](#) [Lung Neoplasms](#) [Multiple Sclerosis](#)  
[Multiple Sclerosis, Relapsing-Remitting](#) [Overweight](#) [Rectal Fistula](#) [Recurrence](#)  
[Tobacco Use Disorder](#)

---

[服務條款](#) | [隱私權政策](#) | [著作及商標](#) | [網站地圖](#)

©2016 亞諾法生技股份有限公司 Abnova Corporation. 版權所有.