



# SZABO SCANDIC

Part of Europa Biosite

## Produktinformation



Forschungsprodukte & Biochemikalien



Zellkultur & Verbrauchsmaterial



Diagnostik & molekulare Diagnostik



Laborgeräte & Service

Weitere Information auf den folgenden Seiten!  
See the following pages for more information!



### Lieferung & Zahlungsart

siehe unsere [Liefer- und Versandbedingungen](#)

### Zuschläge

- Mindermengenzuschlag
- Trockeneiszuschlag
- Gefahrgutzuschlag
- Expressversand

### SZABO-SCANDIC HandelsgmbH

Quellenstraße 110, A-1100 Wien

T. +43(0)1 489 3961-0

F. +43(0)1 489 3961-7

[mail@szabo-scandic.com](mailto:mail@szabo-scandic.com)

[www.szabo-scandic.com](http://www.szabo-scandic.com)

[linkedin.com/company/szaboscandic](https://www.linkedin.com/company/szaboscandic) 

## FGL1 MaxPab mouse polyclonal antibody (B01) MaxPab®

Catalog # : H00002267-B01

規格 : [ 50 uL ]

[List All](#)

### Specification

**Product Description:** Mouse polyclonal antibody raised against a full-length human FGL1 protein.

**Immunogen:** FGL1 (NP\_004458.3, 1 a.a. ~ 312 a.a) full-length human protein.

**Sequence:**  
 MAKVFSFILVTTALTMGREISALEDCAQEQMRLRAQVRLLETRVKQQQV  
 KIKQLLQENEVQFLDKGDENTVIDLGSKRQYADCSEIFNDGYKLSGFYKIK  
 PLQSPAEFVSYCDMSDGGGWTVIQRRSDGSENFNRGWKDYENGFGNF  
 VQKHGEYWLGNKNLHFLTTQEDYTLKIDLADFEKNSRYAQYKNFKVGDE  
 KNFYELNIGEYSGTAGDSLGNFHFPEVQWWASHQRMKFSTWDRDHDN  
 YEGNCAEEDQSGWWFNRCHSANLNGVYYSGPYTAKTDNGIWWYTWHG  
 WWYSLKSVMMKIRPNDFIPNV

**Host:** Mouse

**Reactivity:** Human

**Quality Control Testing:** Antibody reactive against mammalian transfected lysate.

**Storage Buffer:** No additive

**Storage Instruction:** Store at -20°C or lower. Aliquot to avoid repeated freezing and thawing.

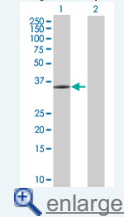
**Note:** For IHC and IF applications, antibody purification with Protein A will be needed prior to use.

**MSDS:**  [Download](#)

**Datasheet:**  [Download](#)

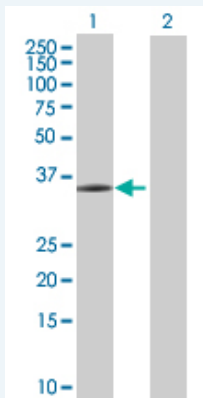
### Application Image

Western Blot (Transfected lysate)



### Applications

Western Blot (Transfected lysate)



Western Blot analysis of FGL1 expression in transfected 293T cell line ([H00002267-T01](#)) by FGL1 MaxPab polyclonal antibody.

Lane 1: FGL1 transfected lysate(34.32 KDa).

Lane 2: Non-transfected lysate.

## Gene Information

---

**Entrez GeneID:** [2267](#)

**GeneBank  
Accession#:** [NM\\_004467.3](#)

**Protein  
Accession#:** [NP\\_004458.3](#)

**Gene Name:** FGL1

**Gene Alias:** HFREP1,HP-041,LFIRE1,MGC12455

**Gene  
Description:** fibrinogen-like 1

**Omim ID:** [605776](#)

**Gene Ontology:** [Hyperlink](#)

**Gene Summary:** Fibrinogen-like 1 is a member of the fibrinogen family. This protein is homologous to the carboxy terminus of the fibrinogen beta- and gamma- subunits which contains the four conserved cysteines of fibrinogens and fibrinogen related proteins. However, this protein lacks the platelet-binding site, cross-linking region and a thrombin-sensitive site which are necessary for fibrin clot formation. This protein may play a role in the development of hepatocellular carcinomas. Four alternatively spliced transcript variants encoding the same protein exist for this gene. [provided by RefSeq]

**Other  
Designations:** OTTHUMP00000122468,hepassocin,hepatocellular carcinoma-related sequence,hepatocyte-derived fibrinogen-related protein 1

## Related Disease

---

[Carcinoma, Hepatocellular](#) [Cardiovascular Diseases](#) [Coronary Disease](#)  
[Diabetes Mellitus, Type 2](#) [Disease Progression](#) [Edema](#) [Genetic Predisposition to Disease](#)  
[Hepatitis C](#) [Liver Neoplasms](#) [Tobacco Use Disorder](#) [Viremia](#)