



SZABO SCANDIC

Part of Europa Biosite

Produktinformation



Forschungsprodukte & Biochemikalien



Zellkultur & Verbrauchsmaterial



Diagnostik & molekulare Diagnostik



Laborgeräte & Service

Weitere Information auf den folgenden Seiten!
See the following pages for more information!



Lieferung & Zahlungsart

siehe unsere [Liefer- und Versandbedingungen](#)

Zuschläge

- Mindermengenzuschlag
- Trockeneiszuschlag
- Gefahrgutzuschlag
- Expressversand

SZABO-SCANDIC HandelsgmbH

Quellenstraße 110, A-1100 Wien

T. +43(0)1 489 3961-0

F. +43(0)1 489 3961-7

mail@szabo-scandic.com

www.szabo-scandic.com

[linkedin.com/company/szaboscandic](https://www.linkedin.com/company/szaboscandic) 

FGL1 purified MaxPab rabbit polyclonal antibody (D01P) MaxPab®

Catalog # : H00002267-D01P

規格 : [100 ug]

[List All](#)

Specification

Product Description: Rabbit polyclonal antibody raised against a full-length human FGL1 protein.

Immunogen: FGL1 (NP_004458.3, 1 a.a. ~ 312 a.a) full-length human protein.

Sequence:
 MAKVFSFILVTTALTMGREISALEDCAQEQMRLRAQVRLLETRVKQQQV
 KIKQLLQENEVQFLDKGDENTVIDLGSKRQYADCSEIFNDGYKLSGFYKIK
 PLQSPAEFVYCDMSDGGGWTVIQRRSDGSENFNRGWKDYENGFGNF
 VQKHGEYWLGNKNLHFLTQEDYTLKIDLADFEKNSRYAQYKNFKVGDE
 KNFYELNIGEYSGTAGDSLGNFHPEVQWWASHQRMKFSTWDRDHDN
 YEGNCAEEDQSGWWFNRCHSANLNGVYYSGPYAKTDNGIWWYTWHG
 WWYSLKSVVMKIRPNDIPNVI

Host: Rabbit

Reactivity: Human, Mouse

Quality Control Testing: Antibody reactive against mammalian transfected lysate.

Storage Buffer: In 1x PBS, pH 7.4

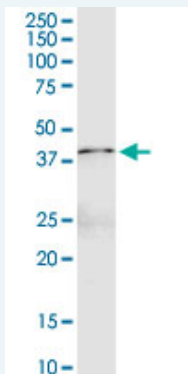
Storage Instruction: Store at -20°C or lower. Aliquot to avoid repeated freezing and thawing.

MSDS: [Download](#)

Datasheet: [Download](#)

Applications

Western Blot (Tissue lysate)



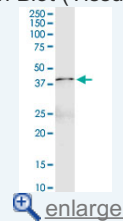
FGL1 MaxPab rabbit polyclonal antibody. Western Blot analysis of FGL1 expression in mouse intestine.

[Protocol Download](#)

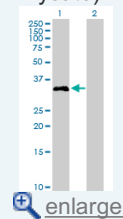
Western Blot (Transfected lysate)

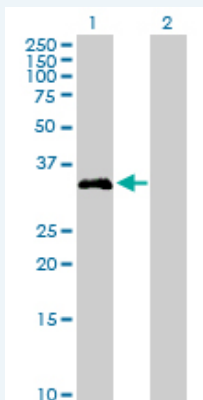
Application Image

Western Blot (Tissue lysate)



Western Blot (Transfected lysate)





Western Blot analysis of FGL1 expression in transfected 293T cell line ([H00002267-T01](#)) by FGL1 MaxPab polyclonal antibody.

Lane 1: FGL1 transfected lysate(36.40 KDa).
Lane 2: Non-transfected lysate.

 [Protocol Download](#)

Gene Information

Entrez GeneID: [2267](#)

GeneBank Accession#: [NM_004467.3](#)

Protein Accession#: [NP_004458.3](#)

Gene Name: FGL1

Gene Alias: HFREP1,HP-041,LFIRE1,MGC12455

Gene Description: fibrinogen-like 1

Omim ID: [605776](#)

Gene Ontology: [Hyperlink](#)

Gene Summary: Fibrinogen-like 1 is a member of the fibrinogen family. This protein is homologous to the carboxy terminus of the fibrinogen beta- and gamma- subunits which contains the four conserved cysteines of fibrinogens and fibrinogen related proteins. However, this protein lacks the platelet-binding site, cross-linking region and a thrombin-sensitive site which are necessary for fibrin clot formation. This protein may play a role in the development of hepatocellular carcinomas. Four alternatively spliced transcript variants encoding the same protein exist for this gene. [provided by RefSeq]

Other Designations: OTTHUMP00000122468,hepassocin,hepatocellular carcinoma-related sequence,hepatocyte-derived fibrinogen-related protein 1

Related Disease

[Carcinoma, Hepatocellular](#) [Cardiovascular Diseases](#) [Coronary Disease](#)
[Diabetes Mellitus, Type 2](#) [Disease Progression](#) [Edema](#) [Genetic Predisposition to Disease](#)
[Hepatitis C](#) [Liver Neoplasms](#) [Tobacco Use Disorder](#) [Viremia](#)