



SZABO SCANDIC

Part of Europa Biosite

Produktinformation



Forschungsprodukte & Biochemikalien



Zellkultur & Verbrauchsmaterial



Diagnostik & molekulare Diagnostik



Laborgeräte & Service

Weitere Information auf den folgenden Seiten!
See the following pages for more information!



Lieferung & Zahlungsart

siehe unsere [Liefer- und Versandbedingungen](#)

Zuschläge

- Mindermengenzuschlag
- Trockeneiszuschlag
- Gefahrgutzuschlag
- Expressversand

SZABO-SCANDIC HandelsgmbH

Quellenstraße 110, A-1100 Wien

T. +43(0)1 489 3961-0

F. +43(0)1 489 3961-7

mail@szabo-scandic.com

www.szabo-scandic.com

[linkedin.com/company/szaboscandic](https://www.linkedin.com/company/szaboscandic) 

FGL1 monoclonal antibody (M06), clone 2C7

Catalog # : H00002267-M06

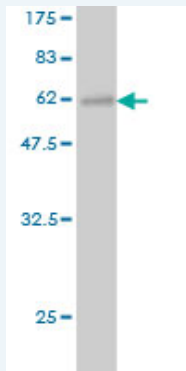
規格 : [100 ug]

[List All](#)

Specification

Product Description:	Mouse monoclonal antibody raised against a full length recombinant FGL1.
Immunogen:	FGL1 (AAH07047.1, 19 a.a. ~ 312 a.a) full-length recombinant protein with GST tag. MW of the GST tag alone is 26 KDa.
Sequence:	EISALEDCAQEQMRLRAQVRLLETRVKQQQVKIKQLLQENEVQFLDKGD ENTVIDLGSKRQYADCSEIFNDGYKLSGFYKIKPLQSPAEFVSYCDMSDG GGWTVIQRRSDGSENFNRGWKDYENGFGNFVQKHGEYWLGNKNLHFL TTQEDYTLKIDLADFEKNSRYAQYKNFKVGDEKNFYELNIGEYSGTAGDS LAGNFHPEVQWWASHQRMKFSTWDRDHDNYEGNCAEEDQSGWWFN RCHSANLNGVYYSGPYAKTDNGIWWYTWHGWWYSLKSVVMKIRPNDFI PNVI
Host:	Mouse
Reactivity:	Human
Isotype:	IgG2b Kappa

Quality Control Testing: Antibody Reactive Against Recombinant Protein.



Western Blot detection against Immunogen (57.97 KDa) .

Storage Buffer: In 1x PBS, pH 7.4

Storage Instruction: Store at -20°C or lower. Aliquot to avoid repeated freezing and thawing.

MSDS:  [Download](#)

Datasheet:  [Download](#)

Applications

Western Blot (Recombinant protein)

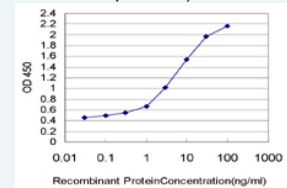
 [Protocol Download](#)


Sandwich ELISA (Recombinant protein)

Application Image

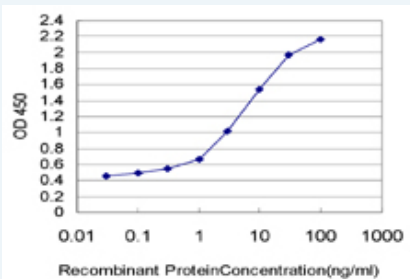
Western Blot (Recombinant protein)

Sandwich ELISA (Recombinant protein)



 [enlarge](#)

ELISA



Detection limit for recombinant GST tagged FGL1 is approximately 0.03ng/ml as a capture antibody.

 [Protocol Download](#)

ELISA

Gene Information

Entrez GeneID: [2267](#)

GeneBank [BC007047](#)

Accession#:

Protein [AAH07047.1](#)

Accession#:

Gene Name: FGL1

Gene Alias: HFREP1,HP-041,LFIRE1,MGC12455

Gene Description: fibrinogen-like 1

Omim ID: [605776](#)

Gene Ontology: [Hyperlink](#)

Gene Summary: Fibrinogen-like 1 is a member of the fibrinogen family. This protein is homologous to the carboxy terminus of the fibrinogen beta- and gamma- subunits which contains the four conserved cysteines of fibrinogens and fibrinogen related proteins. However, this protein lacks the platelet-binding site, cross-linking region and a thrombin-sensitive site which are necessary for fibrin clot formation. This protein may play a role in the development of hepatocellular carcinomas. Four alternatively spliced transcript variants encoding the same protein exist for this gene. [provided by RefSeq]

Other Designations: OTTHUMP00000122468,hepassocin,hepatocellular carcinoma-related sequence,hepatocyte-derived fibrinogen-related protein 1

Related Disease

[Carcinoma, Hepatocellular](#) [Cardiovascular Diseases](#) [Coronary Disease](#)
[Diabetes Mellitus, Type 2](#) [Disease Progression](#) [Edema](#) [Genetic Predisposition to Disease](#)
[Hepatitis C](#) [Liver Neoplasms](#) [Tobacco Use Disorder](#) [Viremia](#)