



# SZABO SCANDIC

Part of Europa Biosite

## Produktinformation



Forschungsprodukte & Biochemikalien



Zellkultur & Verbrauchsmaterial



Diagnostik & molekulare Diagnostik



Laborgeräte & Service

Weitere Information auf den folgenden Seiten!  
See the following pages for more information!



### Lieferung & Zahlungsart

siehe unsere [Liefer- und Versandbedingungen](#)

### Zuschläge

- Mindermengenzuschlag
- Trockeneiszuschlag
- Gefahrgutzuschlag
- Expressversand

### SZABO-SCANDIC HandelsgmbH

Quellenstraße 110, A-1100 Wien

T. +43(0)1 489 3961-0

F. +43(0)1 489 3961-7

[mail@szabo-scandic.com](mailto:mail@szabo-scandic.com)

[www.szabo-scandic.com](http://www.szabo-scandic.com)

[linkedin.com/company/szaboscandic](https://www.linkedin.com/company/szaboscandic) 

## FHL1 polyclonal antibody (A01)

Catalog # : H00002273-A01

規格 : [ 50 uL ]

List All

### Specification

**Product Description:** Mouse polyclonal antibody raised against a partial recombinant FHL1.

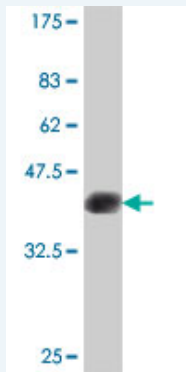
**Immunogen:** FHL1 (NP\_001440, 23 a.a. ~ 120 a.a) partial recombinant protein with GST tag.

**Sequence:** DGHHCLCKCFDKFCANTCVECRKPIGADSKEVHYKNRFWHDTCFRCAK  
CLHPLANETFVAKDNKILCNKCTTREDSPKCKGCFKAIVAGDQNVYKGT

**Host:** Mouse

**Reactivity:** Human

**Quality Control Testing:** Antibody Reactive Against Recombinant Protein.



Western Blot detection against Immunogen (36.89 KDa) .

**Storage Buffer:** 50 % glycerol

**Storage Instruction:** Store at -20°C or lower. Aliquot to avoid repeated freezing and thawing.

**MSDS:** [Download](#)

**Datasheet:** [Download](#)

### Applications

**Western Blot (Recombinant protein)**

[Protocol Download](#)

**ELISA**

### Gene Information

**Entrez GeneID:** [2273](#)

**GeneBank Accession#:** [NM\\_001449](#)

### Application Image

Western Blot (Recombinant protein)

ELISA

**Protein** [NP\\_001440](#)  
**Accession#:**

---

**Gene Name:** FHL1

---

**Gene Alias:** FHL1B,FLH1A,KYO-T,MGC111107,SLIM1,XMPMA,bA535K18.1

---

**Gene Description:** four and a half LIM domains 1

---

**Omim ID:** [300163](#)

---

**Gene Ontology:** [Hyperlink](#)

---

**Gene Summary:** LIM proteins, named for 'LIN11, ISL1, and MEC3,' are defined by the possession of a highly conserved double zinc finger motif called the LIM domain.[supplied by OMIM]

---

**Other Designations:** Four-and-a-half LIM domains 1,OTTHUMP00000024097,bA535K18.1 (LIM protein SLIMMER)

---

---

[服務條款](#) | [隱私權政策](#) | [著作及商標](#) | [網站地圖](#)

©2016 亞諾法生技股份有限公司 Abnova Corporation. 版權所有.