



SZABO SCANDIC

Part of Europa Biosite

Produktinformation



Forschungsprodukte & Biochemikalien



Zellkultur & Verbrauchsmaterial



Diagnostik & molekulare Diagnostik



Laborgeräte & Service

Weitere Information auf den folgenden Seiten!
See the following pages for more information!



Lieferung & Zahlungsart

siehe unsere [Liefer- und Versandbedingungen](#)

Zuschläge

- Mindermengenzuschlag
- Trockeneiszuschlag
- Gefahrgutzuschlag
- Expressversand

SZABO-SCANDIC HandelsgmbH

Quellenstraße 110, A-1100 Wien

T. +43(0)1 489 3961-0

F. +43(0)1 489 3961-7

mail@szabo-scandic.com

www.szabo-scandic.com

[linkedin.com/company/szaboscandic](https://www.linkedin.com/company/szaboscandic) 

FHL1 purified MaxPab rabbit polyclonal antibody (D01P) MaxPab®

Catalog # : H00002273-D01P

規格 : [100 ug]

List All

Specification

Product Description: Rabbit polyclonal antibody raised against a full-length human FHL1 protein.

Immunogen: FHL1 (NP_001440.2, 1 a.a. ~ 280 a.a) full-length human protein.

Sequence:
 MAEKFDCHYCRDPLQGKKYVQKDGHHCCCLKCFDKFCANTCVECCKPIG
 ADSKEVHYKNRFWHDTCFRCAKCLHPLANETFVAKDNKILCNKCTTRED
 SPKCKGCFKAIVAGDQNVVEYKGTVWHKDCFTCSNCKQVIGTGSFFPKG
 EDFYCVTCHETKFAKHCVKCNKAITSGGITYDQDPWHADCFVCVTCSSK
 LAGQRFTAVEDQYYCVDYKNFVAKKAGCKNPITFGKGGSSVWAYEG
 QSWHDYCFHCKKCSVNLANKRFVFHQEQVYCPDCAKKL

Host: Rabbit

Reactivity: Human

Quality Control Testing: Antibody reactive against mammalian transfected lysate.

Storage Buffer: In 1x PBS, pH 7.4

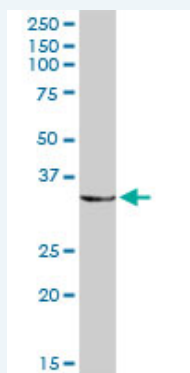
Storage Instruction: Store at -20°C or lower. Aliquot to avoid repeated freezing and thawing.

MSDS:  [Download](#)

Datasheet:  [Download](#)

Applications

Western Blot (Tissue lysate)



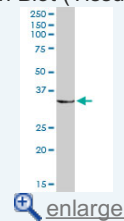
FHL1 MaxPab rabbit polyclonal antibody. Western Blot analysis of FHL1 expression in human kidney.

 [Protocol Download](#)

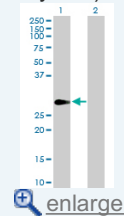
Western Blot (Transfected lysate)

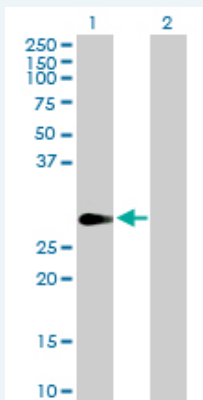
Application Image

Western Blot (Tissue lysate)



Western Blot (Transfected lysate)






Western Blot analysis of FHL1 expression in transfected 293T cell line ([H00002273-T01](#)) by FHL1 MaxPab polyclonal antibody.

Lane 1: FHL1 transfected lysate(31.90 KDa).

Lane 2: Non-transfected lysate.

 [Protocol Download](#)

Gene Information

Entrez GeneID: [2273](#)

GeneBank [NM_001449.3](#)

Accession#:

Protein [NP_001440.2](#)

Accession#:

Gene Name: FHL1

Gene Alias: FHL1B,FLH1A,KYO-T,MGC111107,SLIM1,XMPMA,bA535K18.1

Gene four and a half LIM domains 1

Description:

Omim ID: [300163](#)

Gene Ontology: [Hyperlink](#)

Gene Summary: LIM proteins, named for 'LIN11, ISL1, and MEC3,' are defined by the possession of a highly conserved double zinc finger motif called the LIM domain.[supplied by OMIM]

Other Four-and-a-half LIM domains 1,OTTHUMP00000024097,bA535K18.1

Designations: (LIM protein SLIMMER)

[服務條款](#) | [隱私權政策](#) | [著作及商標](#) | [網站地圖](#)

©2016 亞諾法生技股份有限公司 Abnova Corporation. 版權所有.