



# SZABO SCANDIC

Part of Europa Biosite

## Produktinformation



Forschungsprodukte & Biochemikalien



Zellkultur & Verbrauchsmaterial



Diagnostik & molekulare Diagnostik



Laborgeräte & Service

Weitere Information auf den folgenden Seiten!  
See the following pages for more information!



### Lieferung & Zahlungsart

siehe unsere [Liefer- und Versandbedingungen](#)

### Zuschläge

- Mindermengenzuschlag
- Trockeneiszuschlag
- Gefahrgutzuschlag
- Expressversand

### SZABO-SCANDIC HandelsgmbH

Quellenstraße 110, A-1100 Wien

T. +43(0)1 489 3961-0

F. +43(0)1 489 3961-7

[mail@szabo-scandic.com](mailto:mail@szabo-scandic.com)

[www.szabo-scandic.com](http://www.szabo-scandic.com)

[linkedin.com/company/szaboscandic](https://www.linkedin.com/company/szaboscandic) 

## FHL1 monoclonal antibody (M01), clone 2A9

Catalog # : H00002273-M01

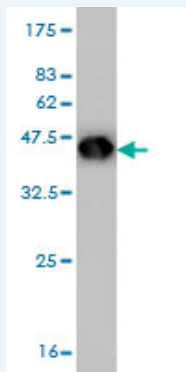
規格 : [ 100 ug ]

[List All](#)

### Specification

<b>Product Description:</b>	Mouse monoclonal antibody raised against a partial recombinant FHL1.
<b>Immunogen:</b>	FHL1 (NP_001440, 23 a.a. ~ 120 a.a) partial recombinant protein with GST tag. MW of the GST tag alone is 26 KDa.
<b>Sequence:</b>	DGHHCLCKCFDKFCANTCVECRKPIGADSKVEVHYKNRFWHDTCFRCAK CLHPLANETFVAKDNKILCNKCTTREDSPKCKGCFKAIVAGDQNVYKGT
<b>Host:</b>	Mouse
<b>Reactivity:</b>	Human, Mouse, Rat
<b>Isotype:</b>	IgG2a Kappa

**Quality Control Testing:** Antibody Reactive Against Recombinant Protein.



Western Blot detection against Immunogen (36.52 KDa) .

**Storage Buffer:** In 1x PBS, pH 7.4

**Storage Instruction:** Store at -20°C or lower. Aliquot to avoid repeated freezing and thawing.

**MSDS:** [Download](#)

**Datasheet:** [Download](#)

### Publication Reference

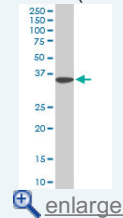
1. [Carbonic Anhydrase III and Four-and-a-Half LIM Protein 1 are preferentially oxidized with muscle unloading.](#)  
Chen CN, Ferrington DA, Thompson LV. *J Appl Physiol.* 2008 Nov;105(5):1554-61. Epub 2008 Aug 28.

### Applications

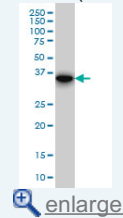
**Western Blot (Cell lysate)**

### Application Image

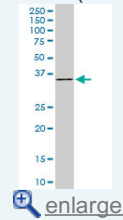
Western Blot (Cell lysate)



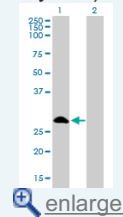
Western Blot (Cell lysate)



Western Blot (Cell lysate)

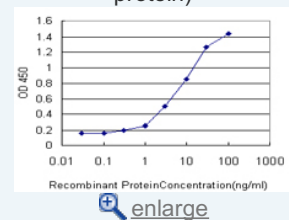


Western Blot (Transfected lysate)

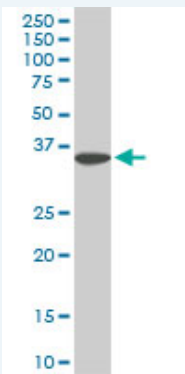


Western Blot (Recombinant protein)

Sandwich ELISA (Recombinant protein)



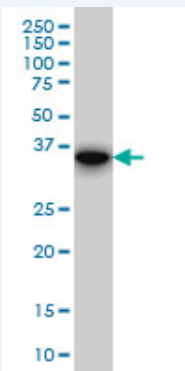
ELISA



FHL1 monoclonal antibody (M01), clone 2A9. Western Blot analysis of FHL1 expression in PC-12(Cat # L012V1 ).

 [Protocol Download](#)

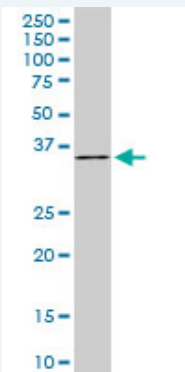
#### Western Blot (Cell lysate)



FHL1 monoclonal antibody (M01), clone 2A9. Western Blot analysis of FHL1 expression in Raw 264.7.

 [Protocol Download](#)

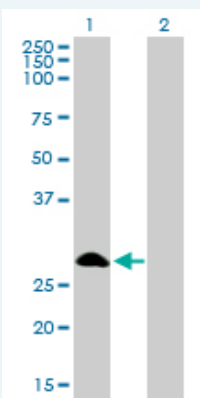
#### Western Blot (Cell lysate)



FHL1 monoclonal antibody (M01), clone 2A9. Western Blot analysis of FHL1 expression in NIH/3T3(Cat # L018V1 ).

 [Protocol Download](#)

#### Western Blot (Transfected lysate)



Western Blot analysis of FHL1 expression in transfected 293T cell line by FHL1 monoclonal antibody (M01), clone 2A9.

Lane 1: FHL1 transfected lysate(31.9 KDa).  
Lane 2: Non-transfected lysate.

 [Protocol Download](#)

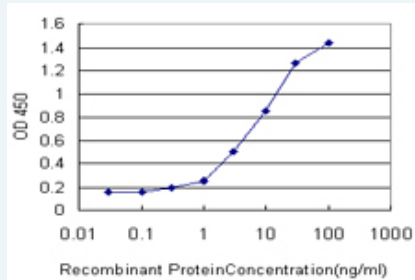
---

### Western Blot (Recombinant protein)

 [Protocol Download](#)

---

### Sandwich ELISA (Recombinant protein)



Detection limit for recombinant GST tagged FHL1 is approximately 0.3ng/ml as a capture antibody.

 [Protocol Download](#)

---

### ELISA

---

### Gene Information

**Entrez GeneID:** [2273](#)

**GeneBank Accession#:** [NM\\_001449](#)

**Protein Accession#:** [NP\\_001440](#)

**Gene Name:** FHL1

**Gene Alias:** FHL1B,FLH1A,KYO-T,MGC111107,SLIM1,XMPMA,bA535K18.1

**Gene Description:** four and a half LIM domains 1

**Omim ID:** [300163](#)

**Gene Ontology:** [Hyperlink](#)

**Gene Summary:** LIM proteins, named for 'LIN11, ISL1, and MEC3,' are defined by the possession of a highly conserved double zinc finger motif called the LIM domain.[supplied by OMIM]

**Other Designations:** Four-and-a-half LIM domains 1,OTTHUMP00000024097,bA535K18.1 (LIM protein SLIMMER)