



SZABO SCANDIC

Part of Europa Biosite

Produktinformation



Forschungsprodukte & Biochemikalien



Zellkultur & Verbrauchsmaterial



Diagnostik & molekulare Diagnostik



Laborgeräte & Service

Weitere Information auf den folgenden Seiten!
See the following pages for more information!



Lieferung & Zahlungsart

siehe unsere [Liefer- und Versandbedingungen](#)

Zuschläge

- Mindermengenzuschlag
- Trockeneiszuschlag
- Gefahrgutzuschlag
- Expressversand

SZABO-SCANDIC HandelsgmbH

Quellenstraße 110, A-1100 Wien

T. +43(0)1 489 3961-0

F. +43(0)1 489 3961-7

mail@szabo-scandic.com

www.szabo-scandic.com

[linkedin.com/company/szaboscandic](https://www.linkedin.com/company/szaboscandic) 

FHL1 monoclonal antibody (M05), clone 2F7

Catalog # : H00002273-M05

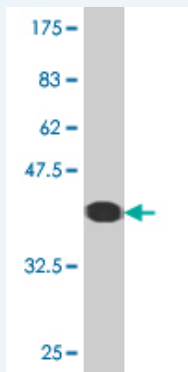
規格 : [100 ug]

[List All](#)

Specification

Product Description:	Mouse monoclonal antibody raised against a partial recombinant FHL1.
Immunogen:	FHL1 (NP_001440, 23 a.a. ~ 120 a.a) partial recombinant protein with GST tag. MW of the GST tag alone is 26 KDa.
Sequence:	DGHHCLCKCFDKFCANTCVECRKPIGADSKEVHYKNRFWHDTCFRCAK CLHPLANETFVAKDNKILCNKCTTREDSPKCKGCFKAIVAGDQNVYKGT
Host:	Mouse
Reactivity:	Human, Rat
Isotype:	IgG2a Kappa

Quality Control Testing: Antibody Reactive Against Recombinant Protein.



Western Blot detection against Immunogen (36.52 KDa) .

Storage Buffer: In 1x PBS, pH 7.4

Storage Instruction: Store at -20°C or lower. Aliquot to avoid repeated freezing and thawing.

MSDS: [Download](#)

Datasheet: [Download](#)

Publication Reference

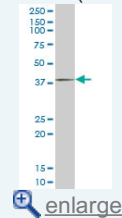
1. [Clinical Significance of Loss of Fhl1 Expression in Human Gastric Cancer.](#)
Sakashita K, Mimori K, Tanaka F, Kamohara Y, Inoue H, Sawada T, Hirakawa K, Mori M. *Ann Surg Oncol.* 2008 Aug;15(8):2293-300. Epub 2008 May 9.

Applications

Western Blot (Cell lysate)

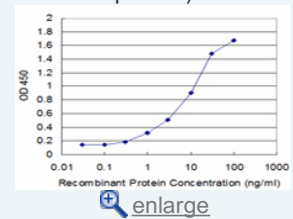
Application Image

Western Blot (Cell lysate)

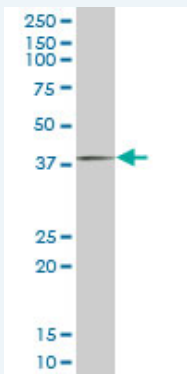


Western Blot (Recombinant protein)

Sandwich ELISA (Recombinant protein)



ELISA



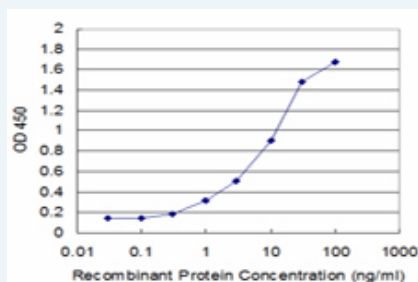
FHL1 monoclonal antibody (M05), clone 2F7. Western Blot analysis of FHL1 expression in PC-12 (Cat # L012V1).

[Protocol Download](#)

Western Blot (Recombinant protein)

[Protocol Download](#)

Sandwich ELISA (Recombinant protein)



Detection limit for recombinant GST tagged FHL1 is approximately 0.3ng/ml as a capture antibody.

[Protocol Download](#)

ELISA

Gene Information

Entrez GeneID: [2273](#)

GeneBank [NM_001449](#)

Accession#:

Protein [NP_001440](#)

Accession#:

Gene Name: FHL1

Gene Alias: FHL1B,FLH1A,KYO-T,MGC111107,SLIM1,XMPMA,bA535K18.1

Gene Description: four and a half LIM domains 1

Description:

Omim ID: [300163](#)

Gene Ontology: [Hyperlink](#)

Gene Summary: LIM proteins, named for 'LIN11, ISL1, and MEC3,' are defined by the possession of a highly conserved double zinc finger motif called the LIM domain.[supplied by OMIM]

Other Designations: Four-and-a-half LIM domains 1,OTTHUMP00000024097,bA535K18.1 (LIM protein SLIMMER)

