



# SZABO SCANDIC

Part of Europa Biosite

## Produktinformation



Forschungsprodukte & Biochemikalien



Zellkultur & Verbrauchsmaterial



Diagnostik & molekulare Diagnostik



Laborgeräte & Service

Weitere Information auf den folgenden Seiten!  
See the following pages for more information!



### Lieferung & Zahlungsart

siehe unsere [Liefer- und Versandbedingungen](#)

### Zuschläge

- Mindermengenzuschlag
- Trockeneiszuschlag
- Gefahrgutzuschlag
- Expressversand

### SZABO-SCANDIC HandelsgmbH

Quellenstraße 110, A-1100 Wien

T. +43(0)1 489 3961-0

F. +43(0)1 489 3961-7

[mail@szabo-scandic.com](mailto:mail@szabo-scandic.com)

[www.szabo-scandic.com](http://www.szabo-scandic.com)

[linkedin.com/company/szaboscandic](https://www.linkedin.com/company/szaboscandic) 

## FIGF MaxPab mouse polyclonal antibody (B01) MaxPab®

Catalog # : H00002277-B01

規格 : [ 50 uL ]

[List All](#)

### Specification

**Product Description:** Mouse polyclonal antibody raised against a full-length human FIGF protein.

**Immunogen:** FIGF (NP\_004460.1, 1 a.a. ~ 354 a.a) full-length human protein.

**Sequence:**  
 MYREVVVVNVFMMLYVQLVQGSSNEHGPKRSSQSTLERSEQQIRAAS  
 SLEELLRITHSEDWKLWRCRLRLKSFTSMDSRSASHRSTRFAATFYDIET  
 LKVIDEEWQRTQCSPRETCVEVASELGKSTNTFFKPPCVNVFRCGGCC  
 NEESLICMNTSTSYISKQLFEISVPLTSVPELVVKVANHTGCKCLPTAPR  
 HPYSIIRRSIQIPEEDRCSHKKLCPIDMLWDSNKCKCVLQEENPLAGTED  
 HSHLQEPALCGPHMMFDEDRCECVCKTPCPKDLIQHPKNCSCFECKESL  
 ETCCQKHKLHPDTCSCEDRCPFHTRPCASGKTACAKHCRFPKEKRAA  
 QGPHSRKNP

**Host:** Mouse

**Reactivity:** Human

**Quality Control Testing:** Antibody reactive against mammalian transfected lysate.

**Storage Buffer:** No additive

**Storage Instruction:** Store at -20°C or lower. Aliquot to avoid repeated freezing and thawing.

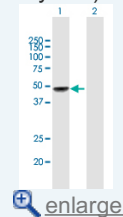
**Note:** For IHC and IF applications, antibody purification with Protein A will be needed prior to use.

**MSDS:**  [Download](#)

**Datasheet:**  [Download](#)

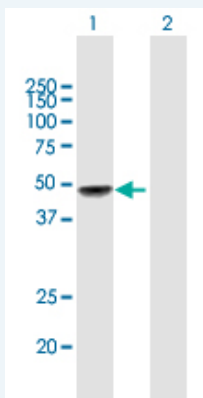
### Application Image

Western Blot (Transfected lysate)



### Applications

Western Blot (Transfected lysate)



Western Blot analysis of FIGF expression in transfected 293T cell line ([H00002277-T01](#)) by FIGF MaxPab polyclonal antibody.

Lane 1: FIGF transfected lysate(38.94 KDa).

## Gene Information

---

**Entrez GeneID:** [2277](#)

---

**GeneBank  
Accession#:** [NM\\_004469](#)

---

**Protein  
Accession#:** [NP\\_004460.1](#)

---

**Gene Name:** FIGF

---

**Gene Alias:** VEGF-D, VEGFD

---

**Gene  
Description:** c-fos induced growth factor (vascular endothelial growth factor D)

---

**Omim ID:** [300091](#)

---

**Gene Ontology:** [Hyperlink](#)

---

**Gene Summary:** The protein encoded by this gene is a member of the platelet-derived growth factor/vascular endothelial growth factor (PDGF/VEGF) family and is active in angiogenesis, lymphangiogenesis, and endothelial cell growth. This secreted protein undergoes a complex proteolytic maturation, generating multiple processed forms which bind and activate VEGFR-2 and VEGFR-3 receptors. This protein is structurally and functionally similar to vascular endothelial growth factor C. [provided by RefSeq]

---

**Other  
Designations:** OTTHUMP00000022960, vascular endothelial growth factor D

---

## Gene Pathway

---

[Bladder cancer](#) [Cytokine-cytokine receptor interaction](#) [Focal adhesion](#)  
[mTOR signaling pathway](#) [Pancreatic cancer](#) [Pathways in cancer](#) [Renal cell carcinoma](#)

---

## Related Disease

---

[Chorioamnionitis](#) [Fetal Membranes, Premature Rupture](#) [Genetic Predisposition to Disease](#)  
[Lymphedema](#) [Obstetric Labor, Premature](#) [Pre-Eclampsia](#) [Premature Birth](#)  
[Thyroid Neoplasms](#)

---