



# SZABO SCANDIC

Part of Europa Biosite

## Produktinformation



Forschungsprodukte & Biochemikalien



Zellkultur & Verbrauchsmaterial



Diagnostik & molekulare Diagnostik



Laborgeräte & Service

Weitere Information auf den folgenden Seiten!  
See the following pages for more information!



### Lieferung & Zahlungsart

siehe unsere [Liefer- und Versandbedingungen](#)

### Zuschläge

- Mindermengenzuschlag
- Trockeneiszuschlag
- Gefahrgutzuschlag
- Expressversand

### SZABO-SCANDIC HandelsgmbH

Quellenstraße 110, A-1100 Wien

T. +43(0)1 489 3961-0

F. +43(0)1 489 3961-7

[mail@szabo-scandic.com](mailto:mail@szabo-scandic.com)

[www.szabo-scandic.com](http://www.szabo-scandic.com)

[linkedin.com/company/szaboscandic](https://www.linkedin.com/company/szaboscandic) 

## FKBP1A monoclonal antibody (M01), clone 1E5-A12

Catalog # : H00002280-M01

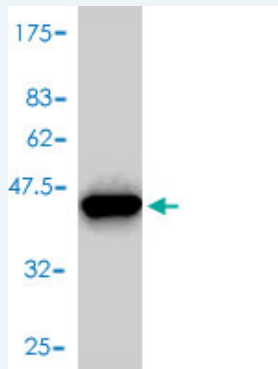
規格 : [ 100 ug ]

List All

### Specification

<b>Product Description:</b>	Mouse monoclonal antibody raised against a full length recombinant FKBP1A.
<b>Immunogen:</b>	FKBP1A (AAH05147, 1 a.a. ~ 108 a.a) full-length recombinant protein with GST tag. MW of the GST tag alone is 26 KDa.
<b>Sequence:</b>	MGVQVETISPGDGRTPFKRGQTCVWHYTGMLEDGKKFDSSRDRNKPF KFMLGKQEVIRGWEEGVAQMSVGQRAKLTISPDIAYGATGHPGIIPPHA TLVFDVELLKLE
<b>Host:</b>	Mouse
<b>Reactivity:</b>	Human
<b>Isotype:</b>	IgG1 kappa

**Quality Control Testing:** Antibody Reactive Against Recombinant Protein.



Western Blot detection against Immunogen (37.62 KDa) .

**Storage Buffer:** In 1x PBS, pH 7.4

**Storage Instruction:** Store at -20°C or lower. Aliquot to avoid repeated freezing and thawing.

**MSDS:** [Download](#)

**Datasheet:** [Download](#)

### Publication Reference

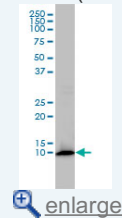
1. Protein-protein interactions: an application of tus-ter mediated protein microarray system.  
Sitaraman K, Chatterjee DK. Methods Mol Biol. 2011;723:185-200.

### Applications

Western Blot (Cell lysate)

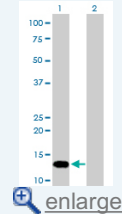
### Application Image

Western Blot (Cell lysate)



[enlarge](#)

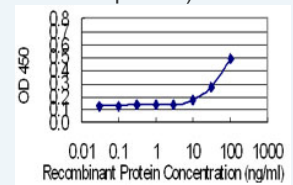
Western Blot (Transfected lysate)



[enlarge](#)

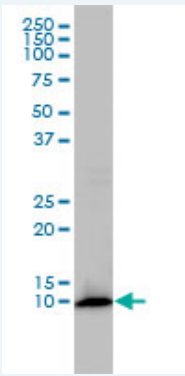
Western Blot (Recombinant protein)

Sandwich ELISA (Recombinant protein)



[enlarge](#)

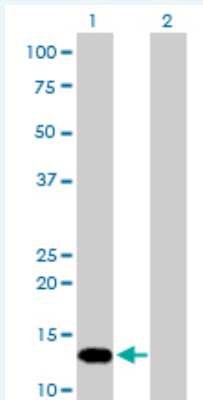
ELISA



FKBP1A monoclonal antibody (M01), clone 1E5-A12 Western Blot analysis of FKBP1A expression in HL-60 ( Cat # L014V1 ).

 [Protocol Download](#)

#### Western Blot (Transfected lysate)



Western Blot analysis of FKBP1A expression in transfected 293T cell line by FKBP1A monoclonal antibody (M01), clone 1E5-A12.

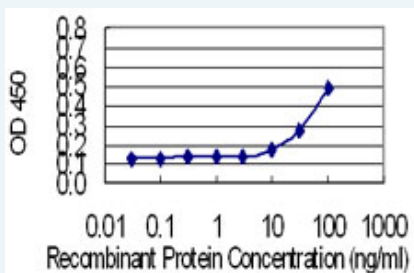
Lane 1: FKBP1A transfected lysate(12 KDa).  
Lane 2: Non-transfected lysate.

 [Protocol Download](#)

#### Western Blot (Recombinant protein)

 [Protocol Download](#)

#### Sandwich ELISA (Recombinant protein)



Detection limit for recombinant GST tagged FKBP1A is 3 ng/ml as a capture antibody.

 [Protocol Download](#)

#### ELISA

#### Gene Information

Entrez GeneID: [2280](#)

GeneBank [BC005147](#)

Accession#:

Protein [AAH05147](#)

Accession#:

**Gene Name:** FKBP1A

**Gene Alias:** FKBP-12,FKBP1,FKBP12,FKBP12C,PKC12,PKCI2,PPIASE

**Gene Description:** FK506 binding protein 1A, 12kDa

**Omim ID:** [186945](#)

**Gene Ontology:** [Hyperlink](#)

**Gene Summary:** The protein encoded by this gene is a member of the immunophilin protein family, which play a role in immunoregulation and basic cellular processes involving protein folding and trafficking. The protein is a cis-trans prolyl isomerase that binds the immunosuppressants FK506 and rapamycin. It interacts with several intracellular signal transduction proteins including type I TGF-beta receptor. It also interacts with multiple intracellular calcium release channels, and coordinates multi-protein complex formation of the tetrameric skeletal muscle ryanodine receptor. In mouse, deletion of this homologous gene causes congenital heart disorder known as noncompaction of left ventricular myocardium. Multiple alternatively spliced variants, encoding the same protein, have been identified. The human genome contains five pseudogenes related to this gene, at least one of which is transcribed. [provided by RefSeq]

**Other Designations:** FK506-binding protein 1,FK506-binding protein 12,FK506-binding protein 1A (12kD),FK506-binding protein, T-cell, 12-kD,OTTHUMP00000029978,immunophilin FKBP12,peptidyl-prolyl cis-trans isomerase,protein kinase C inhibitor 2,rotamase

#### Related Disease

[Cardiovascular Diseases](#) [Diabetes Mellitus, Type 2](#) [Edema](#) [Kidney Failure, Chronic](#)

[服務條款](#) | [隱私權政策](#) | [著作及商標](#) | [網站地圖](#)

©2016 亞諾法生技股份有限公司 Abnova Corporation. 版權所有.