



# SZABO SCANDIC

Part of Europa Biosite

## Produktinformation



Forschungsprodukte & Biochemikalien



Zellkultur & Verbrauchsmaterial



Diagnostik & molekulare Diagnostik



Laborgeräte & Service

Weitere Information auf den folgenden Seiten!  
See the following pages for more information!



### Lieferung & Zahlungsart

siehe unsere [Liefer- und Versandbedingungen](#)

### Zuschläge

- Mindermengenzuschlag
- Trockeneiszuschlag
- Gefahrgutzuschlag
- Expressversand

### SZABO-SCANDIC HandelsgmbH

Quellenstraße 110, A-1100 Wien

T. +43(0)1 489 3961-0

F. +43(0)1 489 3961-7

[mail@szabo-scandic.com](mailto:mail@szabo-scandic.com)

[www.szabo-scandic.com](http://www.szabo-scandic.com)

[linkedin.com/company/szaboscandic](https://www.linkedin.com/company/szaboscandic) 

## FKBP1B monoclonal antibody (M01), clone 4H5-1B6

Catalog # : H00002281-M01

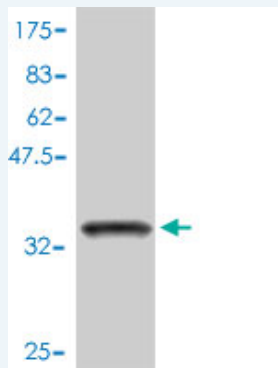
規格 : [ 100 ug ]

List All

### Specification

<b>Product Description:</b>	Mouse monoclonal antibody raised against a full length recombinant FKBP1B.
<b>Immunogen:</b>	FKBP1B (AAH02614, 1 a.a. ~ 80 a.a) full-length recombinant protein with GST tag. MW of the GST tag alone is 26 KDa.
<b>Sequence:</b>	MGVEIETISPGDGRTFPKKGQTCVWHYTGMLQNGKKFDSSRDRNKPFKFRIGKQEVIKGFEEGAAQLGPLSPLPICPHPC
<b>Host:</b>	Mouse
<b>Reactivity:</b>	Human
<b>Isotype:</b>	IgG1 kappa

**Quality Control Testing:** Antibody Reactive Against Recombinant Protein.



Western Blot detection against Immunogen (34.54 KDa) .

**Storage Buffer:** In 1x PBS, pH 7.4

**Storage Instruction:** Store at -20°C or lower. Aliquot to avoid repeated freezing and thawing.

**MSDS:** [Download](#)

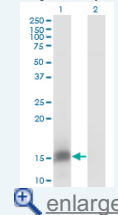
**Datasheet:** [Download](#)

### Applications

Western Blot (Transfected lysate)

### Application Image

Western Blot (Transfected lysate)

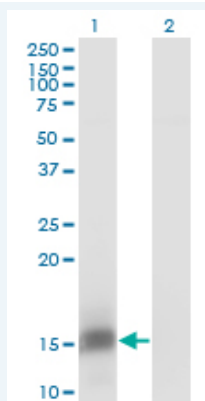


[enlarge](#)

Western Blot (Recombinant protein)

Sandwich ELISA (Recombinant protein)

ELISA



Western Blot analysis of FKBP1B expression in transfected 293T cell line by FKBP1B monoclonal antibody (M01), clone 4H5-1B6.

Lane 1: FKBP1B transfected lysate(11.8 KDa).  
Lane 2: Non-transfected lysate.

[Protocol Download](#)

#### Western Blot (Recombinant protein)

[Protocol Download](#)

#### Sandwich ELISA (Recombinant protein)

Detection limit for recombinant GST tagged FKBP1B is approximately 0.3ng/ml as a capture antibody.

[Protocol Download](#)

#### ELISA

#### Gene Information

Entrez GeneID: [2281](#)

GeneBank [BC002614](#)  
Accession#:

Protein [AAH02614](#)  
Accession#:

Gene Name: FKBP1B

Gene Alias: FKBP12.6,FKBP1L,OTK4,PKBP1L,PPlase

Gene Description: FK506 binding protein 1B, 12.6 kDa

Omim ID: [600620](#)

Gene Ontology: [Hyperlink](#)

**Gene Summary:** The protein encoded by this gene is a member of the immunophilin protein family, which play a role in immunoregulation and basic cellular processes involving protein folding and trafficking. This encoded protein is a cis-trans prolyl isomerase that binds the immunosuppressants FK506 and rapamycin. It is highly similar to the FK506-binding protein 1A. Its physiological role is thought to be in excitation-contraction coupling in cardiac muscle. There are two alternatively spliced transcript variants of this gene encoding different isoforms. [provided by RefSeq]

Other Designations: FK506-binding protein 1-like,FK506-binding protein 12.6,OTTHUMP00000116040,OTTHUMP00000116041,calstabin 2,immunophilin FKBP12.6,peptidyl-prolyl cis-trans isomerase,rotamase

#### Related Disease

