



SZABO SCANDIC

Part of Europa Biosite

Produktinformation



Forschungsprodukte & Biochemikalien



Zellkultur & Verbrauchsmaterial



Diagnostik & molekulare Diagnostik



Laborgeräte & Service

Weitere Information auf den folgenden Seiten!
See the following pages for more information!



Lieferung & Zahlungsart

siehe unsere [Liefer- und Versandbedingungen](#)

Zuschläge

- Mindermengenzuschlag
- Trockeneiszuschlag
- Gefahrgutzuschlag
- Expressversand

SZABO-SCANDIC HandelsgmbH

Quellenstraße 110, A-1100 Wien

T. +43(0)1 489 3961-0

F. +43(0)1 489 3961-7

mail@szabo-scandic.com

www.szabo-scandic.com

[linkedin.com/company/szaboscandic](https://www.linkedin.com/company/szaboscandic) 

FOXF2 monoclonal antibody (M04), clone 2G10

Catalog # : H00002295-M04

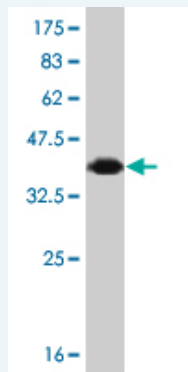
規格 : [100 ug]

[List All](#)

Specification

Product Description:	Mouse monoclonal antibody raised against a partial recombinant FOXF2.
Immunogen:	FOXF2 (NP_001443, 346 a.a. ~ 443 a.a) partial recombinant protein with GST tag. MW of the GST tag alone is 26 KDa.
Sequence:	SPYLKQPPALTPSSNPAASAGLHSSMSSYSLEQSYLHQNAREDL SVGLP RYQHHSTPVCDRKDFVLFNFGISSFHPSASGSYHHHHQSVQCQDIKPCV
Host:	Mouse
Reactivity:	Human, Mouse
Isotype:	IgG2a Kappa

Quality Control Testing: Antibody Reactive Against Recombinant Protein.



Western Blot detection against Immunogen (36.89 KDa) .

Storage Buffer: In 1x PBS, pH 7.4

Storage Instruction: Store at -20°C or lower. Aliquot to avoid repeated freezing and thawing.

MSDS: [Download](#)

Datasheet: [Download](#)

Publication Reference

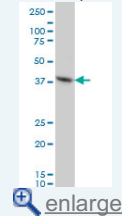
1. [MicroRNA-301 Mediates Proliferation and Invasion in Human Breast Cancer.](#)
Shi W, Gerster K, Alajez NM, Tsang J, Waldron L, Pintilie M, Hui AB, Sykes J, P'ng C, Miller N, McCreedy D, Fyles A, Liu FF. *Cancer Res.* 2011 Apr 15;71(8):2926-2937. Epub 2011 Mar 10.

Applications

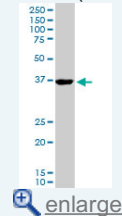
Western Blot (Cell lysate)

Application Image

Western Blot (Cell lysate)

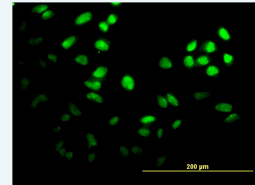


Western Blot (Cell lysate)

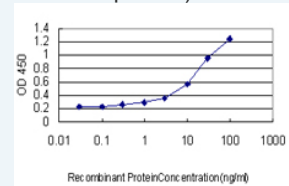


Western Blot (Recombinant protein)

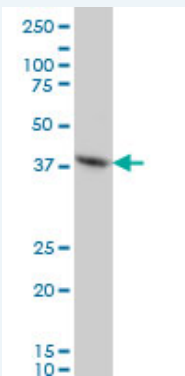
Immunofluorescence



Sandwich ELISA (Recombinant protein)



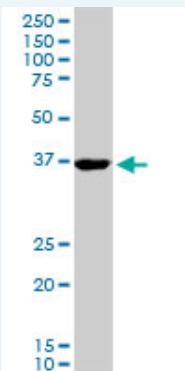
ELISA



FOXF2 monoclonal antibody (M04), clone 2G10 Western Blot analysis of FOXF2 expression in HeLa (Cat # L013V1).

[Protocol Download](#)

Western Blot (Cell lysate)



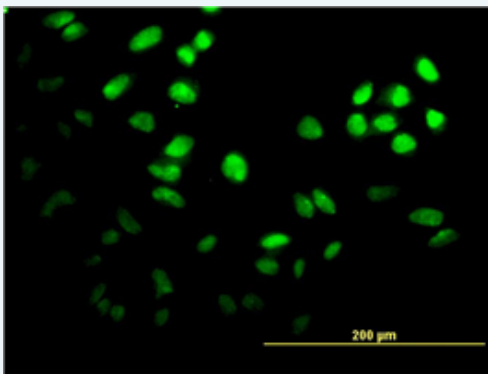
FOXF2 monoclonal antibody (M04), clone 2G10. Western Blot analysis of FOXF2 expression in NIH/3T3 (Cat # L018V1).

[Protocol Download](#)

Western Blot (Recombinant protein)

[Protocol Download](#)

Immunofluorescence

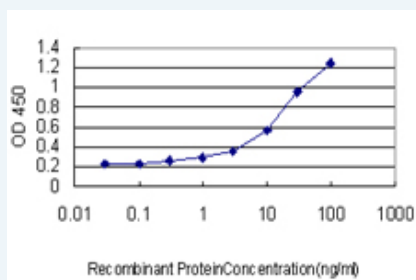


[enlarge this image](#)

Immunofluorescence of monoclonal antibody to FOXF2 on HeLa cell. [antibody concentration 10 ug/ml]

[Protocol Download](#)

Sandwich ELISA (Recombinant protein)



Detection limit for recombinant GST tagged FOXF2 is approximately 0.3ng/ml as a capture antibody.

ELISA

Gene Information

Entrez GeneID: [2295](#)**GeneBank
Accession#:** [NM_001452](#)**Protein
Accession#:** [NP_001443](#)**Gene Name:** FOXF2**Gene Alias:** FKHL6,FREAC2**Gene
Description:** forkhead box F2**Omim ID:** [603250](#)**Gene Ontology:** [Hyperlink](#)**Gene Summary:** FOXF2 encodes forkhead box F2, one of many human homologues of the Drosophila melanogaster transcription factor forkhead. FOXF2 is expressed in lung and placenta, and has been shown to transcriptionally activate several lung-specific genes. [provided by RefSeq]**Other
Designations:** OTTHUMP00000017863,forkhead-like 6**Related Disease**

[Cleft Lip](#) [Cleft Palate](#)