



SZABO SCANDIC

Part of Europa Biosite

Produktinformation



Forschungsprodukte & Biochemikalien



Zellkultur & Verbrauchsmaterial



Diagnostik & molekulare Diagnostik



Laborgeräte & Service

Weitere Information auf den folgenden Seiten!
See the following pages for more information!



Lieferung & Zahlungsart

siehe unsere [Liefer- und Versandbedingungen](#)

Zuschläge

- Mindermengenzuschlag
- Trockeneiszuschlag
- Gefahrgutzuschlag
- Expressversand

SZABO-SCANDIC HandelsgmbH

Quellenstraße 110, A-1100 Wien

T. +43(0)1 489 3961-0

F. +43(0)1 489 3961-7

mail@szabo-scandic.com

www.szabo-scandic.com

[linkedin.com/company/szaboscandic](https://www.linkedin.com/company/szaboscandic) 

FOXF2 monoclonal antibody (M11), clone 2C7

Catalog # : H00002295-M11

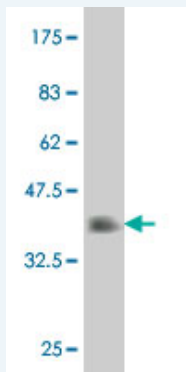
規格 : [100 ug]

[List All](#)

Specification

Product Description:	Mouse monoclonal antibody raised against a full length recombinant FOXF2.
Immunogen:	FOXF2 (NP_001443, 207 a.a. ~ 340 a.a) full length recombinant protein with GST tag. MW of the GST tag alone is 26 KDa.
Sequence:	YHRVWSGLGFGASLLPQGDFDQAPPSAPLGCHSQGGYGGLDMMPAGY DAGAGAPSHAHPHIECHSPYTSPAHHW
Host:	Mouse
Reactivity:	Human
Isotype:	IgG2a Kappa

Quality Control Testing: Antibody Reactive Against Recombinant Protein.



Western Blot detection against Immunogen (40.74 KDa) .

Storage Buffer: In 1x PBS, pH 7.4

Storage Instruction: Store at -20°C or lower. Aliquot to avoid repeated freezing and thawing.

MSDS: [Download](#)

Datasheet: [Download](#)

Applications

Western Blot (Recombinant protein)

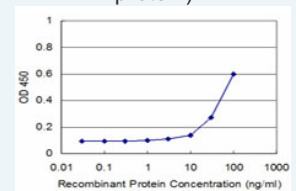
[Protocol Download](#)

Sandwich ELISA (Recombinant protein)

Application Image

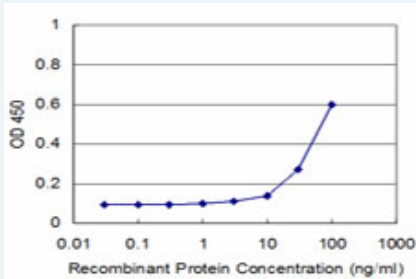
Western Blot (Recombinant protein)

Sandwich ELISA (Recombinant protein)



[enlarge](#)

ELISA



Detection limit for recombinant GST tagged FOXF2 is approximately 3ng/ml as a capture antibody.

 [Protocol Download](#)

ELISA

Gene Information

Entrez GeneID: [2295](#)

GeneBank [NM_001452](#)

Accession#:

Protein [NP_001443](#)

Accession#:

Gene Name: FOXF2

Gene Alias: FKHL6,FREAC2

Gene Description: forkhead box F2

Omim ID: [603250](#)

Gene Ontology: [Hyperlink](#)

Gene Summary: FOXF2 encodes forkhead box F2, one of many human homologues of the Drosophila melanogaster transcription factor forkhead. FOXF2 is expressed in lung and placenta, and has been shown to transcriptionally activate several lung-specific genes. [provided by RefSeq]

Other Designations: OTTHUMP00000017863,forkhead-like 6

Related Disease

[Cleft Lip Cleft Palate](#)