



SZABO SCANDIC

Part of Europa Biosite

Produktinformation



Forschungsprodukte & Biochemikalien



Zellkultur & Verbrauchsmaterial



Diagnostik & molekulare Diagnostik



Laborgeräte & Service

Weitere Information auf den folgenden Seiten!
See the following pages for more information!



Lieferung & Zahlungsart

siehe unsere [Liefer- und Versandbedingungen](#)

Zuschläge

- Mindermengenzuschlag
- Trockeneiszuschlag
- Gefahrgutzuschlag
- Expressversand

SZABO-SCANDIC HandelsgmbH

Quellenstraße 110, A-1100 Wien

T. +43(0)1 489 3961-0

F. +43(0)1 489 3961-7

mail@szabo-scandic.com

www.szabo-scandic.com

[linkedin.com/company/szaboscandic](https://www.linkedin.com/company/szaboscandic) 

FOXF2 monoclonal antibody (M15), clone 4F8

Catalog # : H00002295-M15

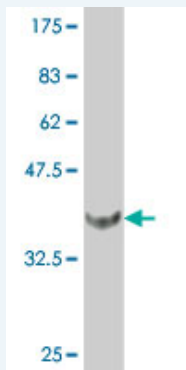
規格 : [100 ug]

[List All](#)

Specification

Product Description:	Mouse monoclonal antibody raised against a full length recombinant FOXF2.
Immunogen:	FOXF2 (NP_001443, 207 a.a. ~ 340 a.a) full length recombinant protein with GST tag. MW of the GST tag alone is 26 KDa.
Sequence:	YHRVWSGLGFGASLLPQGFDFQAPPSAPLGCHSQGGYGGGLDMMPAGY DAGAGAPSHAHPHIECHSPYTSPAHHW
Host:	Mouse
Reactivity:	Human
Isotype:	IgG1 Kappa

Quality Control Testing: Antibody Reactive Against Recombinant Protein.



Western Blot detection against Immunogen (40.74 KDa) .

Storage Buffer: In 1x PBS, pH 7.4

Storage Instruction: Store at -20°C or lower. Aliquot to avoid repeated freezing and thawing.

MSDS: [Download](#)

Datasheet: [Download](#)

Applications

Western Blot (Recombinant protein)

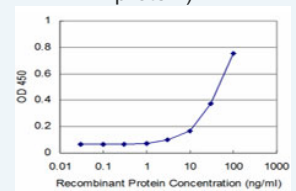
[Protocol Download](#)

Sandwich ELISA (Recombinant protein)

Application Image

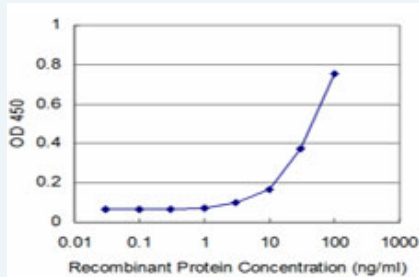
Western Blot (Recombinant protein)

Sandwich ELISA (Recombinant protein)



[enlarge](#)

ELISA



Detection limit for recombinant GST tagged FOXF2 is approximately 3ng/ml as a capture antibody.

 [Protocol Download](#)

ELISA

Gene Information

Entrez GeneID: [2295](#)

GeneBank [NM_001452](#)

Accession#:

Protein [NP_001443](#)

Accession#:

Gene Name: FOXF2

Gene Alias: FKHL6,FREAC2

Gene Description: forkhead box F2

Omim ID: [603250](#)

Gene Ontology: [Hyperlink](#)

Gene Summary: FOXF2 encodes forkhead box F2, one of many human homologues of the *Drosophila melanogaster* transcription factor forkhead. FOXF2 is expressed in lung and placenta, and has been shown to transcriptionally activate several lung-specific genes. [provided by RefSeq]

Other Designations: OTTHUMP00000017863,forkhead-like 6

Related Disease

[Cleft Lip Cleft Palate](#)