



SZABO SCANDIC

Part of Europa Biosite

Produktinformation



Forschungsprodukte & Biochemikalien



Zellkultur & Verbrauchsmaterial



Diagnostik & molekulare Diagnostik



Laborgeräte & Service

Weitere Information auf den folgenden Seiten!
See the following pages for more information!



Lieferung & Zahlungsart

siehe unsere [Liefer- und Versandbedingungen](#)

Zuschläge

- Mindermengenzuschlag
- Trockeneiszuschlag
- Gefahrgutzuschlag
- Expressversand

SZABO-SCANDIC HandelsgmbH

Quellenstraße 110, A-1100 Wien

T. +43(0)1 489 3961-0

F. +43(0)1 489 3961-7

mail@szabo-scandic.com

www.szabo-scandic.com

[linkedin.com/company/szaboscandic](https://www.linkedin.com/company/szaboscandic) 

FOXL1 purified MaxPab rabbit polyclonal antibody (D01P) MaxPab®

Catalog # : H00002300-D01P

規格 : [100 ug]

List All

Specification

Product Description: Rabbit polyclonal antibody raised against a full-length human FOXL1 protein.

Immunogen: FOXL1 (AAI00028.1, 1 a.a. ~ 345 a.a) full-length human protein.

Sequence:
 MSHLFDPRLPALAAASPMLYLYGPERPGLPLAFAPAAALAASGRAETPQK
 PPYSYIALIAMAIQDAPEQRVTLNGIYQFIMDRFPFYHDNRQGWQNSIRHN
 LSLNDCFVKVPREKGRPGKGSYWTLDPRLDMFENGNYYRRRKRKPKP
 GPGAPEAKRPRAETHQRSAEAQPEAGSGAGGSGPAISRLQAAPAGPSP
 LLDGSPAPPALHWPGTASPNEDAGDAAQSAAAVAVGQAARTGDGPGS
 PLRPASRSSPKSSDKSKFSIDSILAGKQGQKPPSGDELLGGAKPGPGG
 RLGASLLAASSLRPPFNASLMLDPHVQGGFYQLGIPFLSYFPLQVPDT
 VLHFQ

Host: Rabbit

Reactivity: Human

Quality Control Testing: Antibody reactive against mammalian transfected lysate.

Storage Buffer: In 1x PBS, pH 7.4

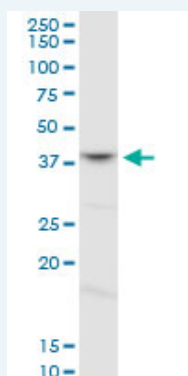
Storage Instruction: Store at -20°C or lower. Aliquot to avoid repeated freezing and thawing.

MSDS:  [Download](#)

Datasheet:  [Download](#)

Applications

Western Blot (Cell lysate)



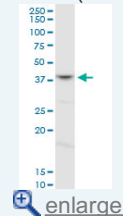
FOXL1 MaxPab rabbit polyclonal antibody. Western Blot analysis of FOXL1 expression in HL-60.

 [Protocol Download](#)

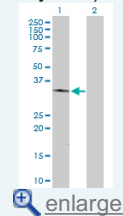
Western Blot (Transfected lysate)

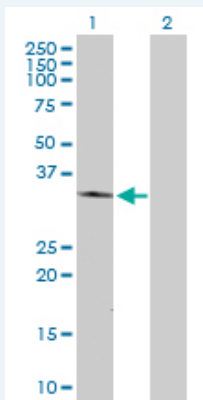
Application Image

Western Blot (Cell lysate)




Western Blot (Transfected lysate)





Western Blot analysis of FOXL1 expression in transfected 293T cell line ([H00002300-T02](#)) by FOXL1 MaxPab polyclonal antibody.

Lane 1: FOXL1 transfected lysate(36.50 KDa).
Lane 2: Non-transfected lysate.

 [Protocol Download](#)

Gene Information

Entrez GeneID: [2300](#)

GeneBank [BC100027.1](#)
Accession#:

Protein [AAI00028.1](#)
Accession#:

Gene Name: FOXL1

Gene Alias: FKH6,FKHL11,FREAC7

Gene forkhead box L1
Description:

Omim ID: [603252](#)

Gene Ontology: [Hyperlink](#)

Other forkhead-like 11
Designations:

Related Disease

[Fractures, Bone](#) [Granulosa Cell Tumor](#) [Lymphedema](#) [Neoplasms](#) [Ovarian Neoplasms](#)
[Thecoma](#)