



SZABO SCANDIC

Part of Europa Biosite

Produktinformation



Forschungsprodukte & Biochemikalien



Zellkultur & Verbrauchsmaterial



Diagnostik & molekulare Diagnostik



Laborgeräte & Service

Weitere Information auf den folgenden Seiten!
See the following pages for more information!



Lieferung & Zahlungsart

siehe unsere [Liefer- und Versandbedingungen](#)

Zuschläge

- Mindermengenzuschlag
- Trockeneiszuschlag
- Gefahrgutzuschlag
- Expressversand

SZABO-SCANDIC HandelsgmbH

Quellenstraße 110, A-1100 Wien

T. +43(0)1 489 3961-0

F. +43(0)1 489 3961-7

mail@szabo-scandic.com

www.szabo-scandic.com

[linkedin.com/company/szaboscandic](https://www.linkedin.com/company/szaboscandic) 

FOXL1 monoclonal antibody (M01), clone 1F4

Catalog # : H00002300-M01

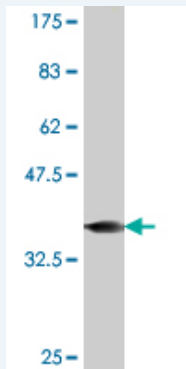
規格 : [100 ug]

[List All](#)

Specification

Product Description:	Mouse monoclonal antibody raised against a partial recombinant FOXL1.
Immunogen:	FOXL1 (NP_005241.1, 221 a.a. ~ 319 a.a) partial recombinant protein with GST tag. MW of the GST tag alone is 26 KDa.
Sequence:	AAQGAAAVAVGQAARTGDGPGSPLRPASRSPKSSDKSKSFSIDSILAG KQGQKPPSGDELLGGAKPGPGGRLGASLLAASSLRPPFNASLMLDPH VQ
Host:	Mouse
Reactivity:	Human
Isotype:	IgG2a Kappa

Quality Control Testing: Antibody Reactive Against Recombinant Protein.



Western Blot detection against Immunogen (36.63 KDa) .

Storage Buffer: In 1x PBS, pH 7.4

Storage Instruction: Store at -20°C or lower. Aliquot to avoid repeated freezing and thawing.

MSDS: [Download](#)

Datasheet: [Download](#)

Applications

Western Blot (Recombinant protein)

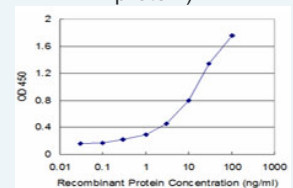
[Protocol Download](#)

Sandwich ELISA (Recombinant protein)

Application Image

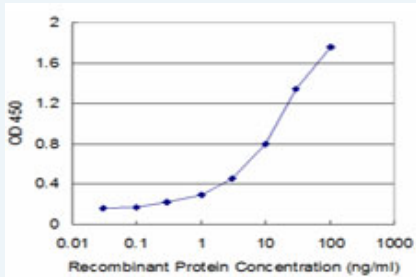
Western Blot (Recombinant protein)

Sandwich ELISA (Recombinant protein)




[enlarge](#)

ELISA



Detection limit for recombinant GST tagged FOXL1 is approximately 0.3ng/ml as a capture antibody.

 [Protocol Download](#)

ELISA

Gene Information

Entrez GeneID: [2300](#)

GeneBank [NM_005250](#)

Accession#:

Protein [NP_005241.1](#)

Accession#:

Gene Name: FOXL1

Gene Alias: FKH6,FKHL11,FREAC7

Gene Description: forkhead box L1

Description:

Omim ID: [603252](#)

Gene Ontology: [Hyperlink](#)

Other Designations: forkhead-like 11

Designations:

Related Disease

[Fractures, Bone](#) [Granulosa Cell Tumor](#) [Lymphedema](#) [Neoplasms](#) [Ovarian Neoplasms](#)
[Thecoma](#)