



# SZABO SCANDIC

Part of Europa Biosite

## Produktinformation



Forschungsprodukte & Biochemikalien



Zellkultur & Verbrauchsmaterial



Diagnostik & molekulare Diagnostik



Laborgeräte & Service

Weitere Information auf den folgenden Seiten!  
See the following pages for more information!



### Lieferung & Zahlungsart

siehe unsere [Liefer- und Versandbedingungen](#)

### Zuschläge

- Mindermengenzuschlag
- Trockeneiszuschlag
- Gefahrgutzuschlag
- Expressversand

### SZABO-SCANDIC HandelsgmbH

Quellenstraße 110, A-1100 Wien

T. +43(0)1 489 3961-0

F. +43(0)1 489 3961-7

[mail@szabo-scandic.com](mailto:mail@szabo-scandic.com)

[www.szabo-scandic.com](http://www.szabo-scandic.com)

[linkedin.com/company/szaboscandic](https://www.linkedin.com/company/szaboscandic) 

## FOXL1 monoclonal antibody (M03), clone 1A7

Catalog # : H00002300-M03

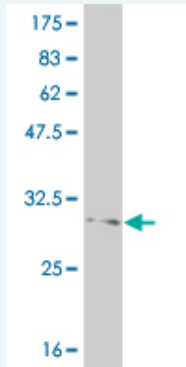
規格 : [ 100 ug ]

List All

### Specification

<b>Product Description:</b>	Mouse monoclonal antibody raised against a partial recombinant FOXL1.
<b>Immunogen:</b>	FOXL1 (NP_005241, 132 a.a. ~ 240 a.a) partial recombinant protein with GST tag. MW of the GST tag alone is 26 KDa.
<b>Sequence:</b>	MFENGNYRRRKPKPGGAPEAKRPRAETHQRSAEAQPEAGSGAGG SGPAISRLQAAPAGPSPLLDGSPPPAPLHWPGTASPNEDAGDAAQGAA AVAVGQAARTGDGP
<b>Host:</b>	Mouse
<b>Reactivity:</b>	Human
<b>Isotype:</b>	IgG2b Kappa

**Quality Control Testing:** Antibody Reactive Against Recombinant Protein.



Western Blot detection against Immunogen (37.99 KDa) .

**Storage Buffer:** In 1x PBS, pH 7.4

**Storage Instruction:** Store at -20°C or lower. Aliquot to avoid repeated freezing and thawing.

**MSDS:** [Download](#)

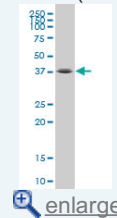
**Datasheet:** [Download](#)

### Applications

Western Blot (Cell lysate)

### Application Image

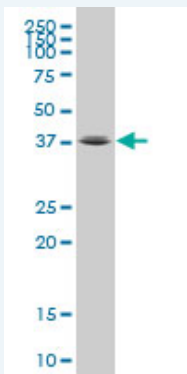
Western Blot (Cell lysate)



[enlarge](#)

Western Blot (Recombinant protein)

ELISA



FOXL1 monoclonal antibody (M03), clone 1A7. Western Blot analysis of FOXL1 expression in Daoy.

 [Protocol Download](#)

---

#### Western Blot (Recombinant protein)

 [Protocol Download](#)

---

#### ELISA

---

#### Gene Information

**Entrez GeneID:** [2300](#)

**GeneBank Accession#:** [NM\\_005250](#)

**Protein Accession#:** [NP\\_005241](#)

**Gene Name:** FOXL1

**Gene Alias:** FKH6,FKHL11,FREAC7

**Gene Description:** forkhead box L1

**Omim ID:** [603252](#)

**Gene Ontology:** [Hyperlink](#)

**Other Designations:** forkhead-like 11

---

#### Related Disease

[Fractures, Bone](#) [Granulosa Cell Tumor](#) [Lymphedema](#) [Neoplasms](#) [Ovarian Neoplasms](#) [Thecoma](#)