



SZABO SCANDIC

Part of Europa Biosite

Produktinformation



Forschungsprodukte & Biochemikalien



Zellkultur & Verbrauchsmaterial



Diagnostik & molekulare Diagnostik



Laborgeräte & Service

Weitere Information auf den folgenden Seiten!
See the following pages for more information!



Lieferung & Zahlungsart

siehe unsere [Liefer- und Versandbedingungen](#)

Zuschläge

- Mindermengenzuschlag
- Trockeneiszuschlag
- Gefahrgutzuschlag
- Expressversand

SZABO-SCANDIC HandelsgmbH

Quellenstraße 110, A-1100 Wien

T. +43(0)1 489 3961-0

F. +43(0)1 489 3961-7

mail@szabo-scandic.com

www.szabo-scandic.com

[linkedin.com/company/szaboscandic](https://www.linkedin.com/company/szaboscandic) 

FOXL1 monoclonal antibody (M04), clone 1C3

Catalog # : H00002300-M04

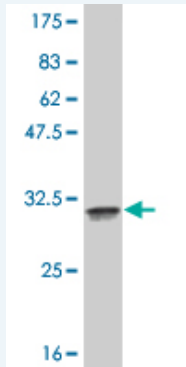
規格 : [100 ug]

[List All](#)

Specification

Product Description:	Mouse monoclonal antibody raised against a full length recombinant FOXL1.
Immunogen:	FOXL1 (NP_005241, 132 a.a. ~ 240 a.a) full length recombinant protein with GST tag. MW of the GST tag alone is 26 KDa.
Sequence:	MFENGNYYRRRKRKPKPGGPAPEAKRPRAETHQRSAEAQPEAGSGAGG SGPAISRLQAAPAGPSPLLDGSPPPAPLHWPGTASPNEAGDAAQGAA AVAVGQAARTGDGP
Host:	Mouse
Reactivity:	Human
Isotype:	IgG2b Kappa

Quality Control Testing: Antibody Reactive Against Recombinant Protein.



Western Blot detection against Immunogen (37.99 KDa) .

Storage Buffer: In 1x PBS, pH 7.4

Storage Instruction: Store at -20°C or lower. Aliquot to avoid repeated freezing and thawing.

MSDS: [Download](#)

Datasheet: [Download](#)

Publication Reference

1. Foxl1 inhibits tumor invasion and predicts outcome in human renal cancer. Yang FQ, Yang FP, Li W, Liu M, Wang GC, Che JP, Huang JH, Zheng JH *Int J Clin Exp Pathol.* 2013 Dec 15;7(1):110-22. eCollection 2013.

Applications

Western Blot (Recombinant protein)

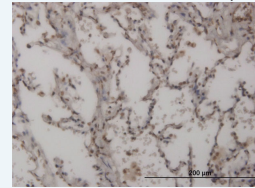
[Protocol Download](#)

Immunohistochemistry (Formalin/PFA-fixed paraffin-embedded sections)

Application Image

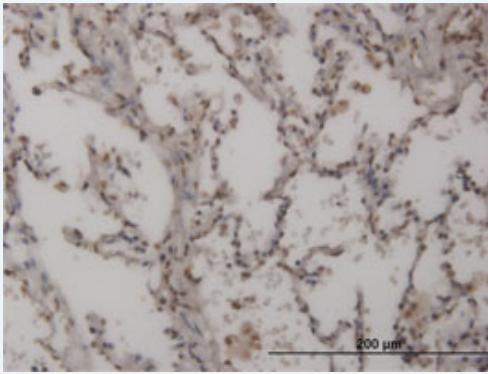
Western Blot (Recombinant protein)

Immunohistochemistry (Formalin/PFA-fixed paraffin-embedded sections)



[enlarge](#)

ELISA



 enlarge this image

Immunoperoxidase of monoclonal antibody to FOXL1 on formalin-fixed paraffin-embedded human lung. [antibody concentration 3 ug/ml]

 [Protocol Download](#)

ELISA

Gene Information

Entrez GeneID: [2300](#)

**GeneBank
Accession#:** [NM_005250](#)

**Protein
Accession#:** [NP_005241](#)

Gene Name: FOXL1

Gene Alias: FKH6,FKHL11,FREAC7

**Gene
Description:** forkhead box L1

Omim ID: [603252](#)

Gene Ontology: [Hyperlink](#)

**Other
Designations:** forkhead-like 11

Related Disease

[Fractures, Bone](#) [Granulosa Cell Tumor](#) [Lymphedema](#) [Neoplasms](#) [Ovarian Neoplasms](#)
[Thecoma](#)

[服務條款](#) | [隱私權政策](#) | [著作及商標](#) | [網站地圖](#)

©2016 亞諾法生技股份有限公司 Abnova Corporation. 版權所有.