



# SZABO SCANDIC

Part of Europa Biosite

## Produktinformation



Forschungsprodukte & Biochemikalien



Zellkultur & Verbrauchsmaterial



Diagnostik & molekulare Diagnostik



Laborgeräte & Service

Weitere Information auf den folgenden Seiten!  
See the following pages for more information!



### Lieferung & Zahlungsart

siehe unsere [Liefer- und Versandbedingungen](#)

### Zuschläge

- Mindermengenzuschlag
- Trockeneiszuschlag
- Gefahrgutzuschlag
- Expressversand

### SZABO-SCANDIC HandelsgmbH

Quellenstraße 110, A-1100 Wien

T. +43(0)1 489 3961-0

F. +43(0)1 489 3961-7

[mail@szabo-scandic.com](mailto:mail@szabo-scandic.com)

[www.szabo-scandic.com](http://www.szabo-scandic.com)

[linkedin.com/company/szaboscandic](https://www.linkedin.com/company/szaboscandic) 

## FOXL1 monoclonal antibody (M10), clone 2C3

Catalog # : H00002300-M10

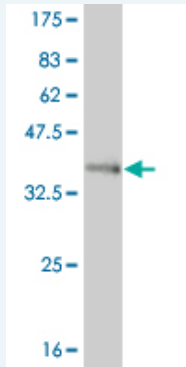
規格 : [ 100 ug ]

[List All](#)

### Specification

<b>Product Description:</b>	Mouse monoclonal antibody raised against a full length recombinant FOXL1.
<b>Immunogen:</b>	FOXL1 (NP_005241, 132 a.a. ~ 240 a.a) full length recombinant protein with GST tag. MW of the GST tag alone is 26 KDa.
<b>Sequence:</b>	MFENGNRYRRRKRPKPGGPAPEAKRPRAETHQRSAEAQPEAGSGAGG SGPAISRLQAAPAGPSPLLDGSPAPLHWPGTASPNEDAGDAAQGAA AVAVGQAARTGDGP
<b>Host:</b>	Mouse
<b>Reactivity:</b>	Human
<b>Isotype:</b>	IgG2a Kappa

**Quality Control Testing:** Antibody Reactive Against Recombinant Protein.



Western Blot detection against Immunogen (37.99 KDa) .

**Storage Buffer:** In 1x PBS, pH 7.4

**Storage Instruction:** Store at -20°C or lower. Aliquot to avoid repeated freezing and thawing.

**MSDS:** [Download](#)

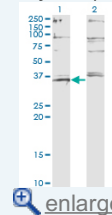
**Datasheet:** [Download](#)

### Applications

Western Blot (Transfected lysate)

### Application Image

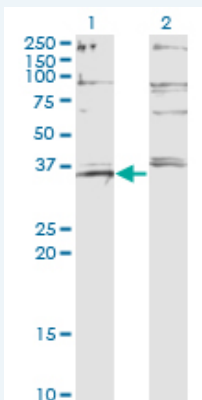
Western Blot (Transfected lysate)



[enlarge](#)


Western Blot (Recombinant protein)

ELISA




Western Blot analysis of FOXL1 expression in transfected 293T cell line by FOXL1 monoclonal antibody (M10), clone 2C3.

Lane 1: FOXL1 transfected lysate(36.5 KDa).  
Lane 2: Non-transfected lysate.

 [Protocol Download](#)

### Western Blot (Recombinant protein)

 [Protocol Download](#)

### ELISA

### Gene Information

Entrez GeneID: [2300](#)

GeneBank Accession#: [NM\\_005250](#)

Protein Accession#: [NP\\_005241](#)

Gene Name: FOXL1

Gene Alias: FKH6,FKHL11,FREAC7

Gene Description: forkhead box L1

Omim ID: [603252](#)

Gene Ontology: [Hyperlink](#)

Other Designations: forkhead-like 11

### Related Disease

[Fractures, Bone](#) [Granulosa Cell Tumor](#) [Lymphedema](#) [Neoplasms](#) [Ovarian Neoplasms](#) [Thecoma](#)