



# SZABO SCANDIC

Part of Europa Biosite

## Produktinformation



Forschungsprodukte & Biochemikalien



Zellkultur & Verbrauchsmaterial



Diagnostik & molekulare Diagnostik



Laborgeräte & Service

Weitere Information auf den folgenden Seiten!  
See the following pages for more information!



### Lieferung & Zahlungsart

siehe unsere [Liefer- und Versandbedingungen](#)

### Zuschläge

- Mindermengenzuschlag
- Trockeneiszuschlag
- Gefahrgutzuschlag
- Expressversand

### SZABO-SCANDIC HandelsgmbH

Quellenstraße 110, A-1100 Wien

T. +43(0)1 489 3961-0

F. +43(0)1 489 3961-7

[mail@szabo-scandic.com](mailto:mail@szabo-scandic.com)

[www.szabo-scandic.com](http://www.szabo-scandic.com)

[linkedin.com/company/szaboscandic](https://www.linkedin.com/company/szaboscandic) 

## FOXL1 monoclonal antibody (M11), clone 3D9

Catalog # : H00002300-M11

規格 : [ 100 ug ]

List All

### Specification

**Product Description:** Mouse monoclonal antibody raised against a full length recombinant FOXL1.

**Immunogen:** FOXL1 (NP\_005241, 132 a.a. ~ 240 a.a) full length recombinant protein with GST tag. MW of the GST tag alone is 26 KDa.

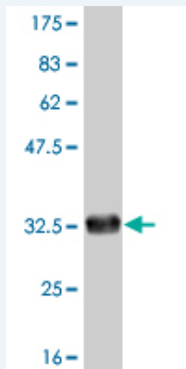
**Sequence:** MFENGNRYRRRKRKPKPGGAPEAKRPRAETHQRSAEAQPEAGSGAGG  
SGPAISRLQAAPAGPSPLLDGSPAPLHWPGTASPNEADAGDAAQGAA  
AVAVGQAARTGDGP

**Host:** Mouse

**Reactivity:** Human

**Isotype:** IgG1 Kappa

**Quality Control Testing:** Antibody Reactive Against Recombinant Protein.



Western Blot detection against Immunogen (37.99 KDa) .

**Storage Buffer:** In 1x PBS, pH 7.4

**Storage Instruction:** Store at -20°C or lower. Aliquot to avoid repeated freezing and thawing.

**MSDS:** [Download](#)

**Datasheet:** [Download](#)

### Applications

Western Blot (Recombinant protein)

[Protocol Download](#)

ELISA

### Gene Information

Entrez GeneID: [2300](#)

### Application Image

Western Blot (Recombinant protein)

ELISA

**GeneBank  
Accession#:** [NM\\_005250](#)

**Protein  
Accession#:** [NP\\_005241](#)

**Gene Name:** FOXL1

**Gene Alias:** FKH6,FKHL11,FREAC7

**Gene  
Description:** forkhead box L1

**Omim ID:** [603252](#)

**Gene Ontology:** [Hyperlink](#)

**Other  
Designations:** forkhead-like 11

#### **Related Disease**

[Fractures, Bone](#) [Granulosa Cell Tumor](#) [Lymphedema](#) [Neoplasms](#) [Ovarian Neoplasms](#)  
[Thecoma](#)

[服務條款](#) | [隱私權政策](#) | [著作及商標](#) | [網站地圖](#)

©2016 亞諾法生技股份有限公司 Abnova Corporation. 版權所有.