



SZABO SCANDIC

Part of Europa Biosite

Produktinformation



Forschungsprodukte & Biochemikalien



Zellkultur & Verbrauchsmaterial



Diagnostik & molekulare Diagnostik



Laborgeräte & Service

Weitere Information auf den folgenden Seiten!
See the following pages for more information!



Lieferung & Zahlungsart

siehe unsere [Liefer- und Versandbedingungen](#)

Zuschläge

- Mindermengenzuschlag
- Trockeneiszuschlag
- Gefahrgutzuschlag
- Expressversand

SZABO-SCANDIC HandelsgmbH

Quellenstraße 110, A-1100 Wien

T. +43(0)1 489 3961-0

F. +43(0)1 489 3961-7

mail@szabo-scandic.com

www.szabo-scandic.com

[linkedin.com/company/szaboscandic](https://www.linkedin.com/company/szaboscandic) 

FOXM1 monoclonal antibody (M07), clone 2E2

Catalog # : H00002305-M07

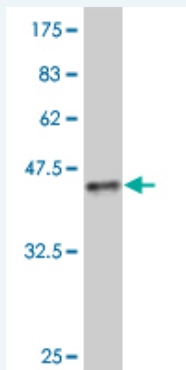
規格 : [100 ug]

[List All](#)

Specification

Product Description:	Mouse monoclonal antibody raised against a full length recombinant FOXM1.
Immunogen:	FOX M1 (NP_973731, 22 a.a. ~ 110 a.a) full-length recombinant protein with GST tag. MW of the GST tag alone is 26 KDa.
Sequence:	NAPSETSEEEPKRSPAQQESNQAEASKEVAESNSCKFPAGIKIINHPTMPN TQVVAIPNNANIHSIITALTAKGKESGSSGPNKFILIS
Host:	Mouse
Reactivity:	Human
Isotype:	IgG2a Kappa

Quality Control Testing: Antibody Reactive Against Recombinant Protein.



Western Blot detection against Immunogen (35.53 KDa) .

Storage Buffer: In 1x PBS, pH 7.4

Storage Instruction: Store at -20°C or lower. Aliquot to avoid repeated freezing and thawing.

MSDS: [Download](#)

Datasheet: [Download](#)

Applications

Western Blot (Recombinant protein)

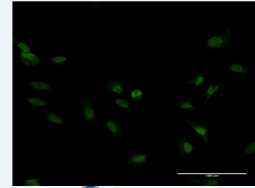
[Protocol Download](#)

Immunofluorescence

Application Image

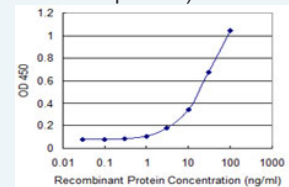
Western Blot (Recombinant protein)

Immunofluorescence



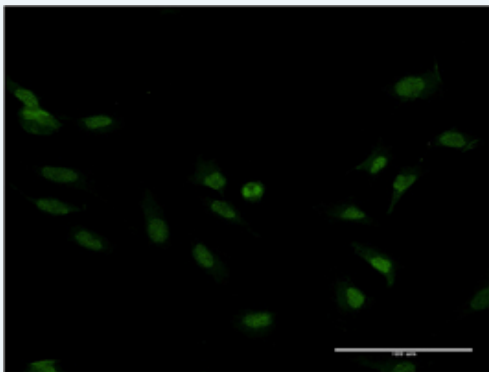
[enlarge](#)

Sandwich ELISA (Recombinant protein)



[enlarge](#)

ELISA

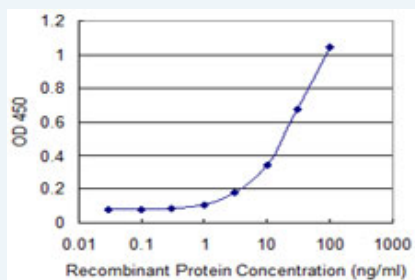


[enlarge this image](#)

Immunofluorescence of monoclonal antibody to FOXM1 on HeLa cell . [antibody concentration 10 ug/ml]

[Protocol Download](#)

Sandwich ELISA (Recombinant protein)



Detection limit for recombinant GST tagged FOXM1 is 0.3 ng/ml as a capture antibody.

[Protocol Download](#)

ELISA

Gene Information

Entrez GeneID: [2305](#)

GeneBank Accession#: [NM_202002](#)

Protein Accession#: [NP_973731](#)

Gene Name: FOXM1

Gene Alias: FKHL16,FOXM1B,HFH-11,HFH11,HNF-3,INS-1,MPHOSPH2,MPP-2,MPP2,PIG29,TGT3,TRIDENT

Gene Description: forkhead box M1

Omim ID: [602341](#)

Gene Ontology: [Hyperlink](#)

Other Designations: Forkhead, drosophila, homolog-like 16,M-phase phosphoprotein 2,forkhead-like 16

Related Disease

[Kidney Failure, Chronic](#)

