



SZABO SCANDIC

Part of Europa Biosite

Produktinformation



Forschungsprodukte & Biochemikalien



Zellkultur & Verbrauchsmaterial



Diagnostik & molekulare Diagnostik



Laborgeräte & Service

Weitere Information auf den folgenden Seiten!
See the following pages for more information!



Lieferung & Zahlungsart

siehe unsere [Liefer- und Versandbedingungen](#)

Zuschläge

- Mindermengenzuschlag
- Trockeneiszuschlag
- Gefahrgutzuschlag
- Expressversand

SZABO-SCANDIC HandelsgmbH

Quellenstraße 110, A-1100 Wien

T. +43(0)1 489 3961-0

F. +43(0)1 489 3961-7

mail@szabo-scandic.com

www.szabo-scandic.com

[linkedin.com/company/szaboscandic](https://www.linkedin.com/company/szaboscandic) 

FOXM1 monoclonal antibody (M09), clone 1D3

Catalog # : H00002305-M09

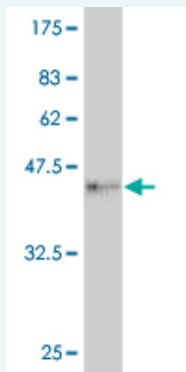
規格 : [100 ug]

[List All](#)

Specification

Product Description:	Mouse monoclonal antibody raised against a full length recombinant FOXM1.
Immunogen:	FOX M1 (NP_973731, 22 a.a. ~ 110 a.a) full-length recombinant protein with GST tag. MW of the GST tag alone is 26 KDa.
Sequence:	NAPSETSEEEPKRSPAQQESNQAEASKEVAESNSCKFPAGIKIINHPTMPN TQVVAIPNNANIHSIITALTAKGKESGSSGNPKFILIS
Host:	Mouse
Reactivity:	Human
Isotype:	IgG2a Kappa

Quality Control Testing: Antibody Reactive Against Recombinant Protein.



Western Blot detection against Immunogen (35.53 KDa) .

Storage Buffer: In 1x PBS, pH 7.4

Storage Instruction: Store at -20°C or lower. Aliquot to avoid repeated freezing and thawing.

MSDS: [Download](#)

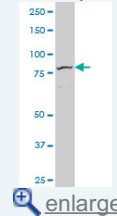
Datasheet: [Download](#)

Applications

Western Blot (Cell lysate)

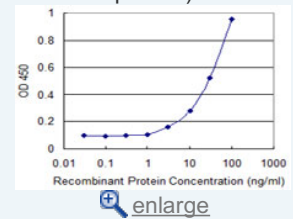
Application Image

Western Blot (Cell lysate)

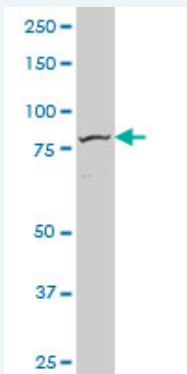


Western Blot (Recombinant protein)

Sandwich ELISA (Recombinant protein)



ELISA



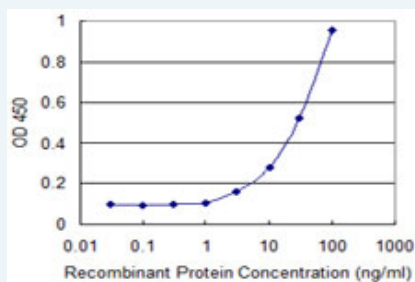
FOXM1 monoclonal antibody (M09), clone 1D3 Western Blot analysis of FOXM1 expression in HeLa S3 NE (Cat # L013V3).

[Protocol Download](#)

Western Blot (Recombinant protein)

[Protocol Download](#)

Sandwich ELISA (Recombinant protein)



Detection limit for recombinant GST tagged FOXM1 is 1 ng/ml as a capture antibody.

[Protocol Download](#)

ELISA

Gene Information

Entrez GeneID: [2305](#)

GeneBank [NM_202002](#)

Accession#:

Protein [NP_973731](#)

Accession#:

Gene Name: FOXM1

Gene Alias: FKHL16,FOXM1B,HFH-11,HFH11,HNF-3,INS-1,MPHOSPH2,MPP-2,MPP2,PIG29,TGT3,TRIDENT

Gene forkhead box M1

Description:

Omim ID: [602341](#)

Gene Ontology: [Hyperlink](#)

Other Forkhead, drosophila, homolog-like 16,M-phase phosphoprotein

Designations: 2,forkhead-like 16

Related Disease

[Kidney Failure, Chronic](#)

