



SZABO SCANDIC

Part of Europa Biosite

Produktinformation



Forschungsprodukte & Biochemikalien



Zellkultur & Verbrauchsmaterial



Diagnostik & molekulare Diagnostik



Laborgeräte & Service

Weitere Information auf den folgenden Seiten!
See the following pages for more information!



Lieferung & Zahlungsart

siehe unsere [Liefer- und Versandbedingungen](#)

Zuschläge

- Mindermengenzuschlag
- Trockeneiszuschlag
- Gefahrgutzuschlag
- Expressversand

SZABO-SCANDIC HandelsgmbH

Quellenstraße 110, A-1100 Wien

T. +43(0)1 489 3961-0

F. +43(0)1 489 3961-7

mail@szabo-scandic.com

www.szabo-scandic.com

[linkedin.com/company/szaboscandic](https://www.linkedin.com/company/szaboscandic) 

FLI1 monoclonal antibody (M05), clone 1F6

Catalog # : H00002313-M05

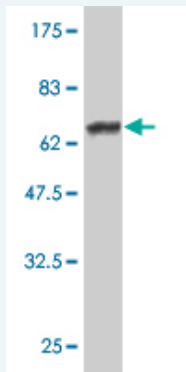
規格 : [100 ug]

[List All](#)

Specification

Product Description:	Mouse monoclonal antibody raised against a full length recombinant FLI1.
Immunogen:	FLI1 (AAH01670, 1 a.a. ~ 452 a.a) full-length recombinant protein with GST tag. MW of the GST tag alone is 26 KDa.
Sequence:	MDGTIKEALSVVSDGQSLFDSAYGAAHLPKADMAASGSPDYGQPHKIN PLPPQQEWISQPVRVNVKREYDHMNGSRESPVDCSVSKCSKLVGGGES NPMNYNSYMDEKNGPPPPNMTTNERVIVPADPTLWTQEHVRQWLEWA IKEYSLMEIDTSFFQNMDGKELCKMNKEDFLRATTLYNTEVLLSHLSYLR ESSLLAYNTTSHTDQSSRLSVKEDPSYDSVRRGAWGNMNSGLNKSP LGGAQTISKNTEQRQPDPYQILGPTSSRLANPGSGQIQLWQFLLELLS DSANASCITWEGTNGEFKMTDPDEVARRWGERISKPNMNYDKLSRALR YYYDKNIMTKVHGKRYAYKFDHFGIAQALQPHPTESMYKYPDSISYMPS YHAHQQKVNFPVPPSSMPVTSSSFFGAASQYWTSPGGIYPNPVPRH PNTHVPSHLGSYY
Host:	Mouse
Reactivity:	Human
Isotype:	IgG2b Kappa

Quality Control Testing: Antibody Reactive Against Recombinant Protein.



Western Blot detection against Immunogen (75.46 KDa) .

Storage Buffer: In 1x PBS, pH 7.4

Storage Instruction: Store at -20°C or lower. Aliquot to avoid repeated freezing and thawing.

MSDS: [Download](#)

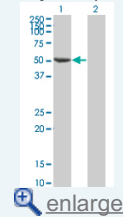
Datasheet: [Download](#)

Applications

Western Blot (Transfected lysate)

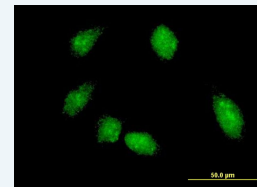
Application Image

Western Blot (Transfected lysate)



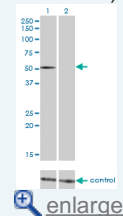
Western Blot (Recombinant protein)

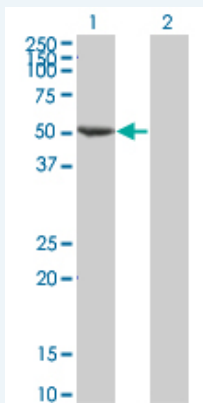
Immunofluorescence



ELISA

RNAi Knockdown (Antibody validated)





Western Blot analysis of FLI1 expression in transfected 293T cell line by FLI1 monoclonal antibody (M05), clone 1F6.

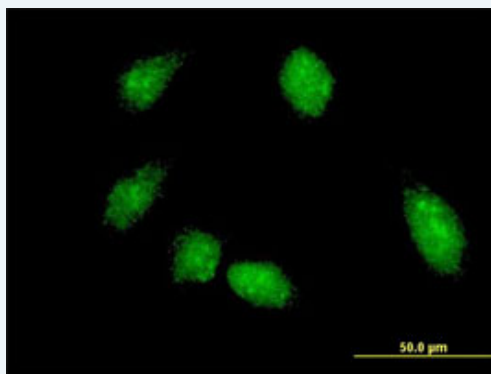
Lane 1: FLI1 transfected lysate(50.982 KDa).
Lane 2: Non-transfected lysate.

[Protocol Download](#)

Western Blot (Recombinant protein)

[Protocol Download](#)

Immunofluorescence



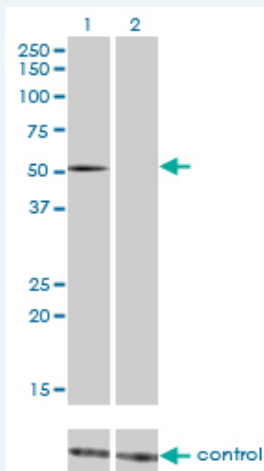
[enlarge this image](#)

Immunofluorescence of monoclonal antibody to FLI1 on HeLa cell . [antibody concentration 10 ug/ml]

[Protocol Download](#)

ELISA

RNAi Knockdown (Antibody validated)



Western blot analysis of FLI1 over-expressed 293 cell line, cotransfected with FLI1 Validated Chimera RNAi (Cat # H00002313-R01V) (Lane 2) or non-transfected control (Lane 1). Blot probed with FLI1 monoclonal antibody (M05), clone 1F6 (Cat # H00002313-M05). GAPDH (36.1 kDa) used as specificity and loading control.

[Protocol Download](#)

Gene Information

Entrez GeneID: [2313](#)

**GeneBank
Accession#:** [BC001670](#)

**Protein
Accession#:** [AAH01670](#)

Gene Name: FLI1

Gene Alias: EWSR2,SIC-1

**Gene
Description:** Friend leukemia virus integration 1

Omim ID: [193067](#)

Gene Ontology: [Hyperlink](#)

**Other
Designations:** -

Related Disease

[Genetic Predisposition to Disease](#) [Lupus Erythematosus, Systemic](#) [Tobacco Use Disorder](#)

[服務條款](#) | [隱私權政策](#) | [著作及商標](#) | [網站地圖](#)

©2016 亞諾法生技股份有限公司 Abnova Corporation. 版權所有.