



SZABO SCANDIC

Part of Europa Biosite

Produktinformation



Forschungsprodukte & Biochemikalien



Zellkultur & Verbrauchsmaterial



Diagnostik & molekulare Diagnostik



Laborgeräte & Service

Weitere Information auf den folgenden Seiten!
See the following pages for more information!



Lieferung & Zahlungsart

siehe unsere [Liefer- und Versandbedingungen](#)

Zuschläge

- Mindermengenzuschlag
- Trockeneiszuschlag
- Gefahrgutzuschlag
- Expressversand

SZABO-SCANDIC HandelsgmbH

Quellenstraße 110, A-1100 Wien

T. +43(0)1 489 3961-0

F. +43(0)1 489 3961-7

mail@szabo-scandic.com

www.szabo-scandic.com

[linkedin.com/company/szaboscandic](https://www.linkedin.com/company/szaboscandic) 

FLI1 monoclonal antibody (M06), clone 2D6

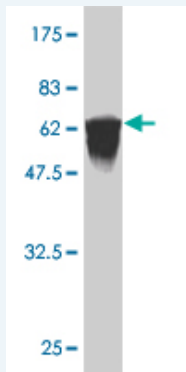
Catalog # : H00002313-M06

規格 : [100 ug]

[List All](#)

Specification

Product Description:	Mouse monoclonal antibody raised against a full length recombinant FLI1.
Immunogen:	FLI1 (AAH01670, 1 a.a. ~ 452 a.a) full-length recombinant protein with GST tag. MW of the GST tag alone is 26 KDa.
Sequence:	MDGTIKEALSWSVDGQSLFDSAYGAAHLPKADMAASGSPDYGQPHKIN PLPPQQEWISQPVRVNVKREYDHMNGSRESPVDCSVSKCSKLVGGGES NPMNYSYMDEKNGPPPPNMTTNERVIVPADPTLWTQEHRQWLEWA IKEYSLMEIDTSFFQNMDGKELCKMNKEDFLRATTLTYNTEVLLSHLSYLR ESSLLAYNTTSHTDQSSRLSVKEDPSYDSVRRGAWGNMNSGLNKSP LGGAQTISKNTEQRQPDPYQILGPTSSRLANPGSGQIQLWQFLLELLS DSANASCITWEGTNGEFKMTDPDEVARRWGERISKPNMNYDKLSRALR YYYDKNIMTKVHGKRYAYKFDHFGIAQALQPHPTESMYKYPDSISYMPS YHAHQQKVNFPVPPSSMPVTSSSFFGAASQYWTSPGGIYPNPVPRH PNTHVPSHLGSYY
Host:	Mouse
Reactivity:	Human, Rat
Isotype:	IgG2a Kappa
Quality Control Testing:	Antibody Reactive Against Recombinant Protein.



Western Blot detection against Immunogen (75.46 KDa) .

Storage Buffer: In 1x PBS, pH 7.4

Storage Instruction: Store at -20°C or lower. Aliquot to avoid repeated freezing and thawing.

MSDS: [Download](#)

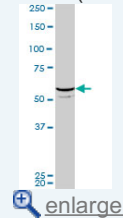
Datasheet: [Download](#)

Applications

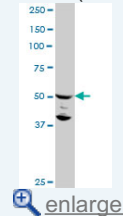
Western Blot (Cell lysate)

Application Image

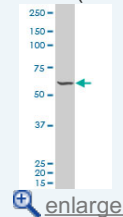
Western Blot (Cell lysate)



Western Blot (Cell lysate)

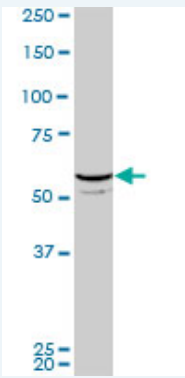


Western Blot (Cell lysate)



Western Blot (Recombinant protein)

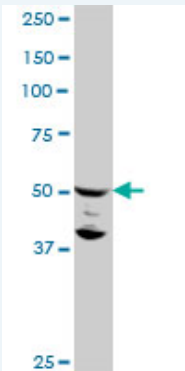
ELISA



FLI1 monoclonal antibody (M06), clone 2D6. Western Blot analysis of FLI1 expression in PC-12 (Cat # L012V1).

 [Protocol Download](#)

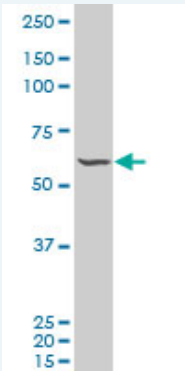
Western Blot (Cell lysate)




FLI1 monoclonal antibody (M06), clone 2D6. Western Blot analysis of FLI1 expression in C32 (Cat # L002V1).

 [Protocol Download](#)

Western Blot (Cell lysate)



FLI1 monoclonal antibody (M06), clone 2D6. Western Blot analysis of FLI1 expression in RIN-m5F.

 [Protocol Download](#)

Western Blot (Recombinant protein)

 [Protocol Download](#)

ELISA

Gene Information

Entrez GeneID: [2313](#)

GeneBank [BC001670](#)

Accession#:

Protein [AAH01670](#)

Accession#:

Gene Name: FLI1

Gene Alias: EWSR2,SIC-1

Gene Description: Friend leukemia virus integration 1

Omim ID: [193067](#)

Gene Ontology: [Hyperlink](#)

Other Designations: -

Related Disease

[Genetic Predisposition to Disease](#) [Lupus Erythematosus](#) [Systemic Tobacco Use Disorder](#)

[服務條款](#) | [隱私權政策](#) | [著作及商標](#) | [網站地圖](#)

©2016 亞諾法生技股份有限公司 Abnova Corporation. 版權所有.