



SZABO SCANDIC

Part of Europa Biosite

Produktinformation



Forschungsprodukte & Biochemikalien



Zellkultur & Verbrauchsmaterial



Diagnostik & molekulare Diagnostik



Laborgeräte & Service

Weitere Information auf den folgenden Seiten!
See the following pages for more information!



Lieferung & Zahlungsart

siehe unsere [Liefer- und Versandbedingungen](#)

Zuschläge

- Mindermengenzuschlag
- Trockeneiszuschlag
- Gefahrgutzuschlag
- Expressversand

SZABO-SCANDIC HandelsgmbH

Quellenstraße 110, A-1100 Wien

T. +43(0)1 489 3961-0

F. +43(0)1 489 3961-7

mail@szabo-scandic.com

www.szabo-scandic.com

[linkedin.com/company/szaboscandic](https://www.linkedin.com/company/szaboscandic) 

FLI1 monoclonal antibody (M09), clone 2F3

Catalog # : H00002313-M09

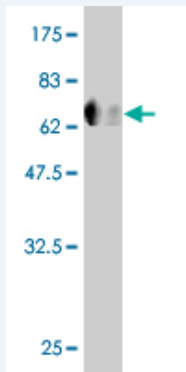
規格 : [100 ug]

[List All](#)

Specification

Product Description:	Mouse monoclonal antibody raised against a full length recombinant FLI1.
Immunogen:	FLI1 (AAH01670, 1 a.a. ~ 452 a.a) full-length recombinant protein with GST tag. MW of the GST tag alone is 26 KDa.
Sequence:	MDGTIKEALSVVSDGQSLFDSAYGAAAHLPKADMAASGSPDYGQPHKIN PLPPQQEWISQPVRVNVKREYDHMNGSRESPVDCSVSKCSKLVGGGES NPMNYSYMDEKNGPPPPNMTTNERVIVPADPTLWTQEHRQWLEWA IKEYSLMEIDTSFFQNMDGKELCKMNKEDFLRATTLTYNTEVLLSHLSYLR ESSLLAYNTTSHTDQSSRLSVKEDPSYDSVRRGAWGNMNSGLNKSP LGGAQTISKNTEQRQPDPYQILGPTSSRLANPGSGQIQLWQFLLELLS DSANASCITWEGTNGEFKMTDPDEVARRWGERISKPNMNYDKLSRALR YYYDKNIMTKVHGKRYAYKDFDFHGIAQALQPHPTESMYKYPDSISYMPS YHAHQQKVNFPVPPSSMPVTSSSFFGAASQYWTSPGGIYPNPVPRH PNTHVPSHLGSYY
Host:	Mouse
Reactivity:	Human
Isotype:	IgG2a Lambda

Quality Control Testing: Antibody Reactive Against Recombinant Protein.



Western Blot detection against Immunogen (75.46 KDa) .

Storage Buffer: In 1x PBS, pH 7.4

Storage Instruction: Store at -20°C or lower. Aliquot to avoid repeated freezing and thawing.

MSDS: [Download](#)

Datasheet: [Download](#)

Applications

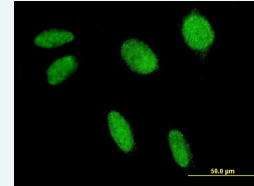
Western Blot (Recombinant protein)

[Protocol Download](#)

Application Image

Western Blot (Recombinant protein)

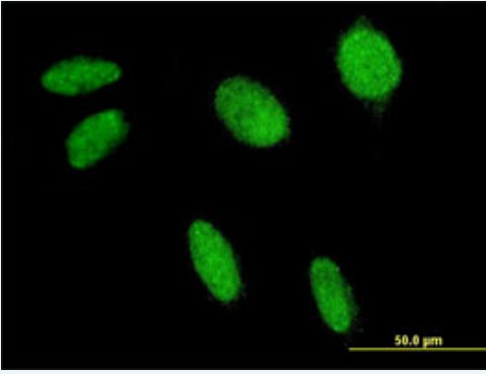
Immunofluorescence



[enlarge](#)

ELISA

Immunofluorescence



[enlarge this image](#)

Immunofluorescence of monoclonal antibody to FLI1 on HeLa cell . [antibody concentration 10 ug/ml]

[Protocol Download](#)

ELISA

Gene Information

Entrez GeneID: [2313](#)

GeneBank [BC001670](#)
Accession#:

Protein [AAH01670](#)
Accession#:

Gene Name: FLI1

Gene Alias: EWSR2,SIC-1

Gene Description: Friend leukemia virus integration 1

Omim ID: [193067](#)

Gene Ontology: [Hyperlink](#)

Other Designations: -

Related Disease

[Genetic Predisposition to Disease](#) [Lupus Erythematosus](#). [Systemic Tobacco Use Disorder](#)

[服務條款](#) | [隱私權政策](#) | [著作及商標](#) | [網站地圖](#)

©2016 亞諾法生技股份有限公司 Abnova Corporation. 版權所有.