



# SZABO SCANDIC

Part of Europa Biosite

## Produktinformation



Forschungsprodukte & Biochemikalien



Zellkultur & Verbrauchsmaterial



Diagnostik & molekulare Diagnostik



Laborgeräte & Service

Weitere Information auf den folgenden Seiten!  
See the following pages for more information!



### Lieferung & Zahlungsart

siehe unsere [Liefer- und Versandbedingungen](#)

### Zuschläge

- Mindermengenzuschlag
- Trockeneiszuschlag
- Gefahrgutzuschlag
- Expressversand

### SZABO-SCANDIC HandelsgmbH

Quellenstraße 110, A-1100 Wien

T. +43(0)1 489 3961-0

F. +43(0)1 489 3961-7

[mail@szabo-scandic.com](mailto:mail@szabo-scandic.com)

[www.szabo-scandic.com](http://www.szabo-scandic.com)

[linkedin.com/company/szaboscandic](https://www.linkedin.com/company/szaboscandic) 

## FLNA monoclonal antibody (M01), clone 4E10-1B2

產品編號 # : H00002316-M01

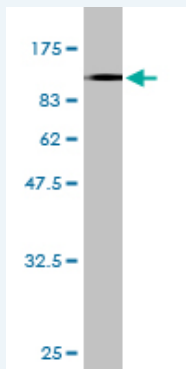
規格 : [ 100 ug ]

List All

### Specification

<b>Product Description:</b>	Mouse monoclonal antibody raised against a full length recombinant FLNA.
<b>Immunogen:</b>	FLNA (AAH14654, 1 a.a. ~ 838 a.a) full-length recombinant protein with GST tag. MW of the GST tag alone is 26 KDa.
<b>Sequence:</b>	MPSGKVAQPTITDNKDGTVTVRYAPSEAGLHEMDIRYDNMHPGSPLQF YVDYVNCGHVTAYGPGLTHGVWNKPATFTVNTKDAGEGGLSLAIEGPSK AEISCTDNQDGTCSVSYLPVLPDYSILVKYNEQHVPGPSPTARVTGDD SMRMSHLKVGSAADIPINISSETDLSLLTATVPPSGREEPCLLKRLRNGHV GISFVPKETGEHLVHVKKNGQHVASSPIPVVISQSEIGDASRVRVSGQGLH EGHTFEPAEFIIDTRDAGYGGLSLSIEGPSKVDINTEDLEDGTCRVTYCPT EPGNYIINIKFADQHVPGPSFVSVKVTGEGRVKESITRRRRAPSVANVGSCH DLSLKIPEISIQDMTAQVTPSPGKTHEAEIVEGENHTYCIRFVPAEMGHTV SVKYKQGHVPGSPFQFTVGPLGEGGAHKVRAGGGLERAEAGVPAEF SIWTR EAGAGGLAIAVEGSPKAEISFEDRKDGSCGVAYVVQEPGDYEVS VKFNEEHIPDSPFVVPVSPSGDARRLTVSSLQESGLKVNQPASFVSLN GAKGAIDAKVHSPSGALEECYVTEIDQDKYAVRFIPRENGVYLIDVKFNGT HIPGSPFKIRVGEPEGHGGDPGLVSYAGAGLEGGVTGNPAEFVNTSNAG AGALSVTIDGSPKVKMDCQECPEGYRVTYTPMAPGSYLISIKYGGPYHIG GSPFKAKVTGPRLVSNHSLHETSSVFVDSLTKATCAPQHAGPAGPADA SKVVAKGLGLSKAYVGQKSSFTVDCSKAGNMMLLVGVHGPRTPCCEILV KHVGSRLYSVSYLLKDKGEYTLVVKWGDEHIPGSPYRVVVP
<b>Host:</b>	Mouse
<b>Reactivity:</b>	Human
<b>Isotype:</b>	IgG1 kappa

**Quality Control Testing:** Antibody Reactive Against Recombinant Protein.



Western Blot detection against Immunogen (117.92 KDa) .

**Storage Buffer:** In 1x PBS, pH 7.4

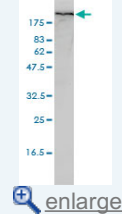
**Storage Instruction:** Store at -20°C or lower. Aliquot to avoid repeated freezing and thawing.

**MSDS:** [Download](#)

**Datasheet:** [Download](#)

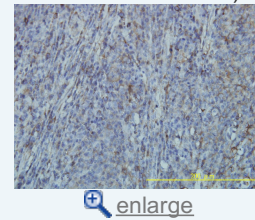
### Application Image

Western Blot (Cell lysate)

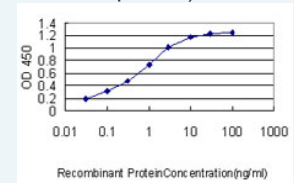


Western Blot (Recombinant protein)

Immunohistochemistry  
(Formalin/PFA-fixed paraffin-embedded sections)

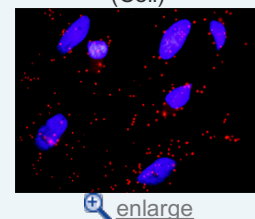


Sandwich ELISA (Recombinant protein)



ELISA

In situ Proximity Ligation Assay  
(Cell)

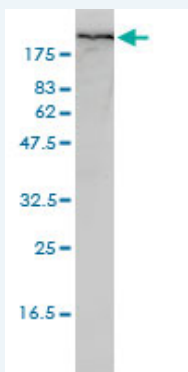


## Publication Reference

1. Familial periventricular nodular heterotopia, epilepsy and Melnick-Needles Syndrome caused by a single FLNA mutation with combined gain-of-function and loss-of-function effects.  
Parrini E, Mei D, Pisanti MA, Catarzi S, Pucatti D, Bianchini C, Mascalchi M, Bertini E, Morrone A, Cavaliere ML, Guerrini RJ *Med Genet.* 2015 Mar 9. pii: jmedgenet-2014-102959. doi: 10.1136/jmedgenet-2014-102959.
2. Fibrinogen-Like Protein 2/Fibroleukin Induces Long-Term Allograft Survival in a Rat Model through Regulatory B Cells.  
Bezie S, Picarda E, Tesson L, Renaudin K, Durand J, Menoret S, Merieau E, Chiffolleau E, Guillonneau C, Caron L, Anegon *IPLoS One.* 2015 Mar 12;10(3):e0119686. doi: 10.1371/journal.pone.0119686. eCollection 2015.
3. Filamin A (FLNA) plays an essential role in somatostatin receptor 2 (SST2) signaling and stabilization after agonist stimulation in human and rat somatotroph tumor cells.  
Peverelli E, Giardino E, Treppiedi D, Vitali E, Cambiaghi V, Locatelli M, Lasio G, Spada A, Lania A, Mantovani G *Endocrinology.* 2014 May 14;en20141063.
4. Junctional Rab13-binding protein (JRAB) regulates cell spreading via filamins.  
Sakane A, Alamir Mahmoud Abdallah A, Nakano K, Honda K, Kitamura T, Imoto I, Matsushita N, Sasaki T *Genes Cells.* 2013 Jul 25. doi: 10.1111/gtc.12078.
5. Novel no-stop FLNA mutation causes multi-organ involvement in males.  
Oegema R, Hulst JM, Theuns-Valks SD, van Unen LM, Schot R, Mancini GM, Schipper ME, de Wit MC, Sibbles BJ, de Coo IF, Nanninga V, Hofstra RM, Halley DJ, Brooks *ASA J Med Genet A.* 2013 Sep;161(9):2376-84. doi: 10.1002/ajmg.a.36109. Epub 2013 Jul 19.
6. Filamin-A Is Essential for Dopamine D2 Receptor Expression and Signaling in Tumorous Lactotrophs.  
Peverelli E, Mantovani G, Vitali E, Elli FM, Olgiati L, Ferrero S, Laws ER, Della Mina P, Villa A, Beck-Peccoz P, Spada A, Lania AG. *J Clin Endocrinol Metab.* 2012 Mar;97(3):967-77.
7. Mutations in TMEM216 perturb ciliogenesis and cause Joubert, Meckel and related syndromes.  
Valente EM, Logan CV, Mougou-Zerelli S, Lee JH, Silhavy JL, Brancati F, Iannicelli M, Travaglini L, Romani S, Illi B, Adams M, Szymanska K, Mazzotta A, Lee JE, Tolentino JC, Swistun D, Salpietro CD, Fede C, Gabriel S, Russ C, Cibulskis K, Sougnez C, Hildebrandt F, Otto EA, Held S, Diplas BH, Davis EE, Mikula M, Strom CM, Ben-Zeev B, Lev D, Sagie TL, Michelson M, Yaron Y, Krause A, Boltshauser E, Elkhartoufi N, Roume J, Shalev S, Munnich A, Saunier S, Inglehearn C, Saad A, Alkindy A, Thomas S, VeNat *Genet.* 2010 May 30. [Epub ahead of print]

## Applications


### Western Blot (Cell lysate)



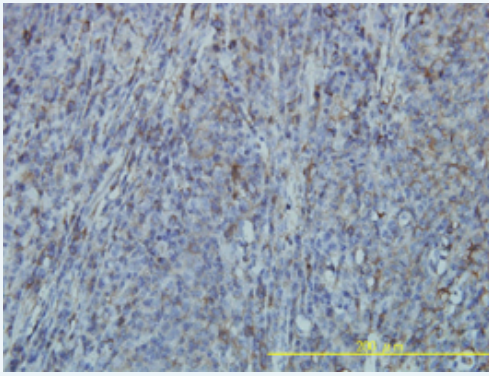
FLNA monoclonal antibody (M01), clone 4E10-1B2 Western Blot analysis of FLNA expression in HL-60 ( Cat # L014V1 ).

 [Protocol Download](#)

### Western Blot (Recombinant protein)

 [Protocol Download](#)

### Immunohistochemistry (Formalin/PFA-fixed paraffin-embedded sections)

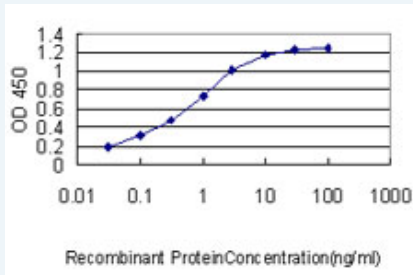


[enlarge this image](#)

Immunoperoxidase of monoclonal antibody to FLNA on formalin-fixed paraffin-embedded human lymphoma tissue. [antibody concentration 1.5 ug/ml]

[Protocol Download](#)

### Sandwich ELISA (Recombinant protein)

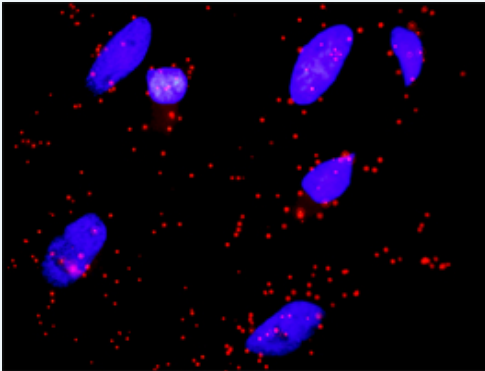


Detection limit for recombinant GST tagged FLNA is approximately 0.03ng/ml as a capture antibody.

[Protocol Download](#)

### ELISA

#### *In situ* Proximity Ligation Assay (Cell)



Proximity Ligation Analysis of protein-protein interactions between GP1BA and FLNA. HeLa cells were stained with anti-GP1BA rabbit purified polyclonal 1:1200 and anti-FLNA mouse monoclonal antibody 1:50. Each red dot represents the detection of protein-protein interaction complex, and nuclei were counterstained with DAPI (blue).

### Gene Information

Entrez GeneID: [2316](#)

GeneBank [BC014654](#)  
Accession#:

Protein [AAH14654](#)  
Accession#:

Gene Name: FLNA

Gene Alias: ABP-280, ABPX, DKFZp434P031, FLN, FLN1, FMD, MNS, NHBP, OPD, OPD1, OPD2

**Gene** filamin A, alpha (actin binding protein 280)

**Description:**

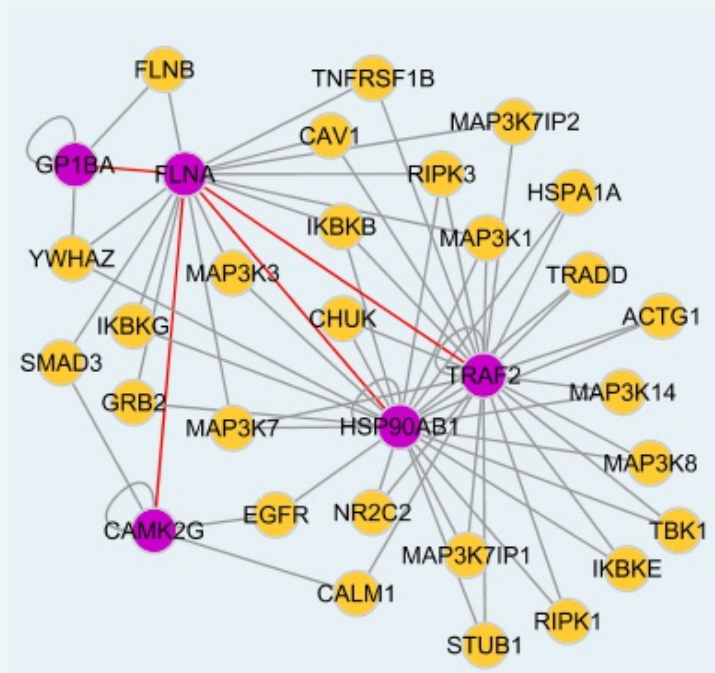
**Omim ID:** [300017](#), [300049](#), [300537](#), [304120](#), [309350](#), [311300](#)

**Gene Ontology:** [Hyperlink](#)

**Gene Summary:** The protein encoded by this gene is an actin-binding protein that crosslinks actin filaments and links actin filaments to membrane glycoproteins. The encoded protein is involved in remodeling the cytoskeleton to effect changes in cell shape and migration. This protein interacts with integrins, transmembrane receptor complexes, and second messengers. Defects in this gene are a cause of several syndromes, including periventricular nodular heterotopias (PVNH1, PVNH4), otopalatodigital syndromes (OPD1, OPD2), frontometaphyseal dysplasia (FMD), Melnick-Needles syndrome (MNS), and X-linked congenital idiopathic intestinal pseudoobstruction (CIIPX). Two transcript variants encoding different isoforms have been found for this gene

**Other Designations:** OTTHUMP00000024320, actin-binding protein 280, filamin 1, filamin A, alpha

**Interactome**



**Gene Pathway**

[Focal adhesion](#) [MAPK signaling pathway](#)

**Related Disease**

[Anorexia Nervosa](#) [Bulimia](#) [Cardiovascular Diseases](#) [Diabetes Mellitus, Type 2](#) [Edema](#) [Genetic Predisposition to Disease](#)