



# SZABO SCANDIC

Part of Europa Biosite

## Produktinformation



Forschungsprodukte & Biochemikalien



Zellkultur & Verbrauchsmaterial



Diagnostik & molekulare Diagnostik



Laborgeräte & Service

Weitere Information auf den folgenden Seiten!  
See the following pages for more information!



### Lieferung & Zahlungsart

siehe unsere [Liefer- und Versandbedingungen](#)

### Zuschläge

- Mindermengenzuschlag
- Trockeneiszuschlag
- Gefahrgutzuschlag
- Expressversand

### SZABO-SCANDIC HandelsgmbH

Quellenstraße 110, A-1100 Wien

T. +43(0)1 489 3961-0

F. +43(0)1 489 3961-7

[mail@szabo-scandic.com](mailto:mail@szabo-scandic.com)

[www.szabo-scandic.com](http://www.szabo-scandic.com)

[linkedin.com/company/szaboscandic](https://www.linkedin.com/company/szaboscandic) 

## FLNB polyclonal antibody (A01)

Catalog # : H00002317-A01

規格 : [ 50 uL ]

List All

### Specification

**Product Description:** Mouse polyclonal antibody raised against a partial recombinant FLNB.

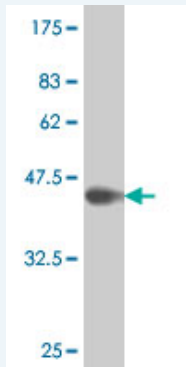
**Immunogen:** FLNB (NP\_001448, 2503 a.a. ~ 2602 a.a) partial recombinant protein with GST tag.

**Sequence:** SAIPKASSDASKVTSKGAGLSKAFVVGQKSSFLVDCSKAGSNMLLIGVHGP  
TTPCEEVSMKHVGNQQYNVTYVVKERGDYVLAVKWGEEHIPGSPFHVT  
VP

**Host:** Mouse

**Reactivity:** Human

**Quality Control Testing:** Antibody Reactive Against Recombinant Protein.



Western Blot detection against Immunogen (37.11 kDa) .

**Storage Buffer:** 50 % glycerol

**Storage Instruction:** Store at -20°C or lower. Aliquot to avoid repeated freezing and thawing.

**MSDS:** [Download](#)

**Datasheet:** [Download](#)

### Applications

Western Blot (Recombinant protein)

[Protocol Download](#)

ELISA

### Gene Information

**Entrez GeneID:** [2317](#)

**GeneBank Accession#:** [NM\\_001457](#)

**Protein Accession#:** [NP\\_001448](#)

**Gene Name:** FLNB

**Gene Alias:** ABP-278,AOI,DKFZp686A1668,DKFZp686O033,FH1,FLN1L,LRS1,SCT,TABP,TAP

**Gene Description:** filamin B, beta (actin binding protein 278)

**Omim ID:** [108720](#), [108721](#), [112310](#), [150250](#), [272460](#), [603381](#)

**Gene Ontology:** [Hyperlink](#)

**Other Designations:** beta filamin,filamin 1 (actin-binding protein-280)-like,filamin B, beta (actin-binding protein-278)

### Gene Pathway

[Focal adhesion](#) [MAPK signaling pathway](#)

### Related Disease

[Cleft Lip](#) [Cleft Palate](#) [Dominance](#), [Cerebral Genetic Predisposition to Disease](#)  
[Schizophrenia](#) [Schizophrenia](#) [Sjogren's Syndrome](#) [Tobacco Use Disorder](#)

[服務條款](#) | [隱私權政策](#) | [著作及商標](#) | [網站地圖](#)

©2016 亞諾法生技股份有限公司 Abnova Corporation. 版權所有.