



# SZABO SCANDIC

Part of Europa Biosite

## Produktinformation



Forschungsprodukte & Biochemikalien



Zellkultur & Verbrauchsmaterial



Diagnostik & molekulare Diagnostik



Laborgeräte & Service

Weitere Information auf den folgenden Seiten!  
See the following pages for more information!



### Lieferung & Zahlungsart

siehe unsere [Liefer- und Versandbedingungen](#)

### Zuschläge

- Mindermengenzuschlag
- Trockeneiszuschlag
- Gefahrgutzuschlag
- Expressversand

### SZABO-SCANDIC HandelsgmbH

Quellenstraße 110, A-1100 Wien

T. +43(0)1 489 3961-0

F. +43(0)1 489 3961-7

[mail@szabo-scandic.com](mailto:mail@szabo-scandic.com)

[www.szabo-scandic.com](http://www.szabo-scandic.com)

[linkedin.com/company/szaboscandic](https://www.linkedin.com/company/szaboscandic) 

## FLNC polyclonal antibody (A01)

Catalog # : H00002318-A01

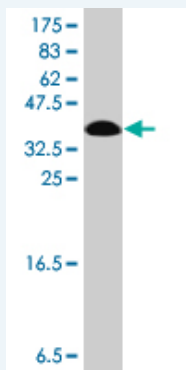
規格 : [ 50 uL ]

[List All](#)

### Specification

<b>Product Description:</b>	Mouse polyclonal antibody raised against a partial recombinant FLNC.
<b>Immunogen:</b>	FLNC (NP_001449.3, 2606 a.a. ~ 2705 a.a) partial recombinant protein with GST tag.
<b>Sequence:</b>	SSIPKFSSDASKVTRGPGLSQAFVGQKNSFTVDCSKAGTNMMMVGVH GPKTPCEEVYVKHMGNRVYNVTYTVKEKGDYILVKGWDESVPGSPFKV KVP
<b>Host:</b>	Mouse
<b>Reactivity:</b>	Human, Mouse

**Quality Control Testing:** Antibody Reactive Against Recombinant Protein.



Western Blot detection against Immunogen (37 KDa) .

**Storage Buffer:** 50 % glycerol

**Storage Instruction:** Store at -20°C or lower. Aliquot to avoid repeated freezing and thawing.

**MSDS:** [Download](#)

**Datasheet:** [Download](#)

### Publication Reference

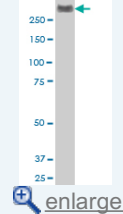
- [Junctional Rab13-binding protein \(JRAB\) regulates cell spreading via filamins.](#)  
Sakane A, Alamir Mahmoud Abdallah A, Nakano K, Honda K, Kitamura T, Imoto I, Matsushita N, Sasaki T Genes Cells. 2013 Jul 25. doi: 10.1111/gtc.12078.
- [Urine proteomics for discovery of improved diagnostic markers of Kawasaki disease.](#)  
Kentsis A, Shulman A, Ahmed S, Brennan E, Monuteaux MC, Lee YH, Lipsett S, Paulo JA, Dedeoglu F, Fuhlbrigge R, Bachur R, Bradwin G, Arditi M, Sundel RP, Newburger JW, Steen H, Kim SEMBO Mol Med. 2013 Feb;5(2):210-20. doi: 10.1002/emmm.201201494. Epub 2012 Dec 20.

### Applications

Western Blot (Cell lysate)

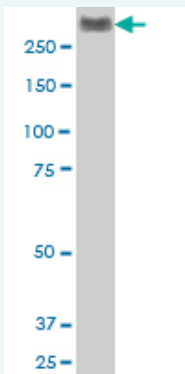
### Application Image

Western Blot (Cell lysate)




Western Blot (Recombinant protein)

ELISA



FLNC polyclonal antibody (A01), Lot # FAK0070504QCS1 Western Blot analysis of FLNC expression in NIH/3T3 ( Cat # L018V1 ).

 [Protocol Download](#)

---

#### Western Blot (Recombinant protein)

 [Protocol Download](#)

---

#### ELISA

---

#### Gene Information

**Entrez GeneID:** [2318](#)

**GeneBank Accession#:** [NM\\_001458](#)

**Protein Accession#:** [NP\\_001449.3](#)

**Gene Name:** FLNC

**Gene Alias:** ABP-280,ABP280A,ABPA,ABPL,FLJ10186,FLN2

**Gene Description:** filamin C, gamma (actin binding protein 280)

**Omim ID:** [102565](#)

**Gene Ontology:** [Hyperlink](#)

**Gene Summary:** This gene encodes one of three related filamin genes, specifically gamma filamin. These filamin proteins crosslink actin filaments into orthogonal networks in cortical cytoplasm and participate in the anchoring of membrane proteins for the actin cytoskeleton. Three functional domains exist in filamin: an N-terminal filamentous actin-binding domain, a C-terminal self-association domain, and a membrane glycoprotein-binding domain. Two transcript variants encoding different isoforms have been found for this gene. [provided by RefSeq]

**Other Designations:** ABP-L, gamma filamin,actin-binding protein 280,filamin 2,filamin C, gamma (actin-binding protein-280),gamma actin-binding protein,gamma filamin,gamma-filamin

---

#### Gene Pathway

[Focal adhesion](#) [MAPK signaling pathway](#)

---

#### Related Disease

[Attention Deficit Disorder with Hyperactivity](#) [Cardiovascular Diseases](#)  
[Diabetes Mellitus, Type 2](#) [Diseases in Twins](#) [Edema](#) [Genetic Predisposition to Disease](#)  
[Muscular Dystrophies](#), [Limb-Girdle](#)

