



SZABO SCANDIC

Part of Europa Biosite

Produktinformation



Forschungsprodukte & Biochemikalien



Zellkultur & Verbrauchsmaterial



Diagnostik & molekulare Diagnostik



Laborgeräte & Service

Weitere Information auf den folgenden Seiten!
See the following pages for more information!



Lieferung & Zahlungsart

siehe unsere [Liefer- und Versandbedingungen](#)

Zuschläge

- Mindermengenzuschlag
- Trockeneiszuschlag
- Gefahrgutzuschlag
- Expressversand

SZABO-SCANDIC HandelsgmbH

Quellenstraße 110, A-1100 Wien

T. +43(0)1 489 3961-0

F. +43(0)1 489 3961-7

mail@szabo-scandic.com

www.szabo-scandic.com

[linkedin.com/company/szaboscandic](https://www.linkedin.com/company/szaboscandic) 

FLOT2 293T Cell Transient Overexpression Lysate(Denatured)

Catalog # : H00002319-T01

規格 : [100 uL]

[List All](#)

Specification

Transfected Cell Line: 293T

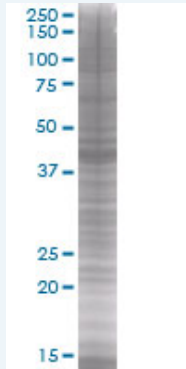
Plasmid: pCMV-FLOT2 full-length

Host: Human

Theoretical MW (kDa): 41.8

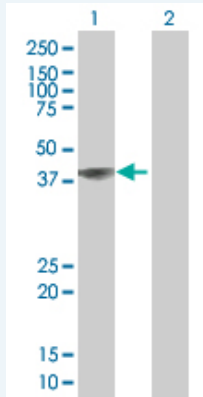
Quality Control Testing: Transient overexpression cell lysate was tested with Anti-FLOT2 antibody ([H00002319-B01](#)) by Western Blots.

SDS-PAGE Gel



FLOT2 transfected lysate

Western Blot



Lane 1: FLOT2 transfected lysate (41.8 KDa).

Lane 2: Non-transfected lysate.

Storage Buffer: 1X Sample Buffer (50 mM Tris-HCl, 2% SDS, 10% glycerol, 300 mM 2-mercaptoethanol, 0.01% Bromophenol blue)

Storage Instruction: Store at -80°C. Aliquot to avoid repeated freezing and thawing.

MSDS:  [Download](#)

Applications

Western Blot

Gene Information

Entrez GeneID: [2319](#)

GeneBank Accession#: [BC017292](#)

Protein Accession#: [AAH17292](#)

Gene Name: FLOT2

Gene Alias: ECS-1,ECS1,ESA,ESA1,M17S1

Gene Description: flotillin 2

Omim ID: [131560](#)

Gene Ontology: [Hyperlink](#)

Gene Summary: Caveolae are small domains on the inner cell membrane involved in vesicular trafficking and signal transduction. This gene encodes a caveolae-associated, integral membrane protein, which is thought to function in neuronal signaling. [provided by RefSeq]

Other Designations: Flotillin 2 (epidermal surface antigen 1),membrane component, chromosome 17, surface marker 1 (35kD protein identified by monoclonal antibody ECS-1)

Gene Pathway

[Insulin signaling pathway](#)

[服務條款](#) | [隱私權政策](#) | [著作及商標](#) | [網站地圖](#)

©2016 亞諾法生技股份有限公司 Abnova Corporation. 版權所有.