



SZABO SCANDIC

Part of Europa Biosite

Produktinformation



Forschungsprodukte & Biochemikalien



Zellkultur & Verbrauchsmaterial



Diagnostik & molekulare Diagnostik



Laborgeräte & Service

Weitere Information auf den folgenden Seiten!
See the following pages for more information!



Lieferung & Zahlungsart

siehe unsere [Liefer- und Versandbedingungen](#)

Zuschläge

- Mindermengenzuschlag
- Trockeneiszuschlag
- Gefahrgutzuschlag
- Expressversand

SZABO-SCANDIC HandelsgmbH

Quellenstraße 110, A-1100 Wien

T. +43(0)1 489 3961-0

F. +43(0)1 489 3961-7

mail@szabo-scandic.com

www.szabo-scandic.com

[linkedin.com/company/szaboscandic](https://www.linkedin.com/company/szaboscandic) 

FLT1 purified MaxPab mouse polyclonal antibody (B01P) MaxPab®

Catalog # : H00002321-B01P

規格 : [50 ug]

[List All](#)

Specification

Product Description: Mouse polyclonal antibody raised against a full-length human FLT1 protein.

Immunogen: FLT1 (AAH39007.1, 1 a.a. ~ 687 a.a) full-length human protein.

Sequence:
 MVSYWDTGVLLCALLSCLLLTGSSSGSKLKDPPELSLKGQTQHIMQAGQTL
 HLQCRGEEAAHKWSLPEMVSKESERLSITKSACGRNGKQFCSTLTLNTAQ
 ANHTGFYSCKYLAVPTSKKKETESAYIFISDTGRPFVEMYSEIPEIIHMTEG
 RELVIPCRVTSFNITVTLKKFPLDTLIPDGKRIWDSRKGFIISNATYKEIGLL
 TCEATVNGHLYKTYLTHRQTNTIIDVQISTPRPVKLLRGHTLVLNCTATT
 PLNTRVQMTWSYPDEKNKRASVRRRIDQSNHANIFYSLTIDKMQNKDK
 GLYTCRVRSGPSFKSVNTSVHIYDKAFITVKHRKQVLETVAGKRSYRLS
 MKVKAFPSPEVWVKDGLPATEKSARYLTRGYSLIKDVTEDAGNYTILL
 SIKQSNVFNLTATLIVNPKQIYEKAVSSFDPALYPLGSRQILTCTAYGI
 PQPTIKWFWHPCNHNHSEARCFCSNNEESFILDADSNMGNRIESITQRM
 AIEGKNKMASTLVVADSRISGIYICIASNKVGTVGRNISFYITDVPNGFHVNL
 EKMPTEGEDLKL SCTVNKFLYRDVTWILLRTVNNRTMHYSISKQKMAITK
 EHSITLNLTIMNVSLQDSGTYACRARVYTGEEILQKKEITIRGEHCNKKAV
 FSRISKFKSTRNDCTTQSNVKH

Host: Mouse

Reactivity: Human

Quality Control Testing: Antibody reactive against mammalian transfected lysate.

Storage Buffer: In 1x PBS, pH 7.4

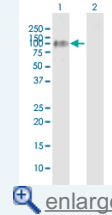
Storage Instruction: Store at -20°C or lower. Aliquot to avoid repeated freezing and thawing.

MSDS:  [Download](#)

Datasheet:  [Download](#)

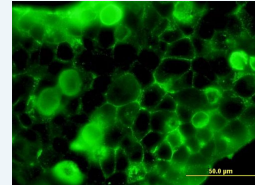
Application Image


Western Blot (Transfected lysate)



 [enlarge](#)

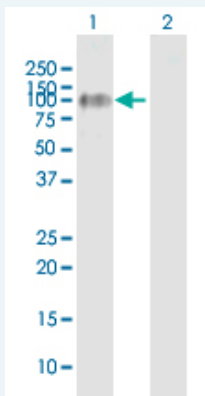
Immunofluorescence



 [enlarge](#)

Applications

Western Blot (Transfected lysate)



Western Blot analysis of FLT1 expression in transfected 293T cell line ([H00002321-T01](#))

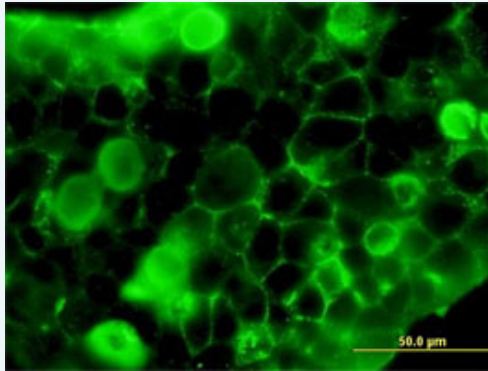
by FLT1 MaxPab polyclonal antibody.

Lane 1: FLT1 transfected lysate(75.57 KDa).

Lane 2: Non-transfected lysate.

 [Protocol Download](#)

Immunofluorescence



 [enlarge this image](#)

Immunofluorescence of purified MaxPab antibody to FLT1 on 293 cell. [antibody concentration 1 ug/ml]

 [Protocol Download](#)

Gene Information

Entrez GeneID: [2321](#)

**GeneBank
Accession#:** [BC039007](#)

**Protein
Accession#:** [AAH39007.1](#)

Gene Name: FLT1

Gene Alias: FLT, VEGFR1

**Gene
Description:** fms-related tyrosine kinase 1 (vascular endothelial growth factor/vascular permeability factor receptor)

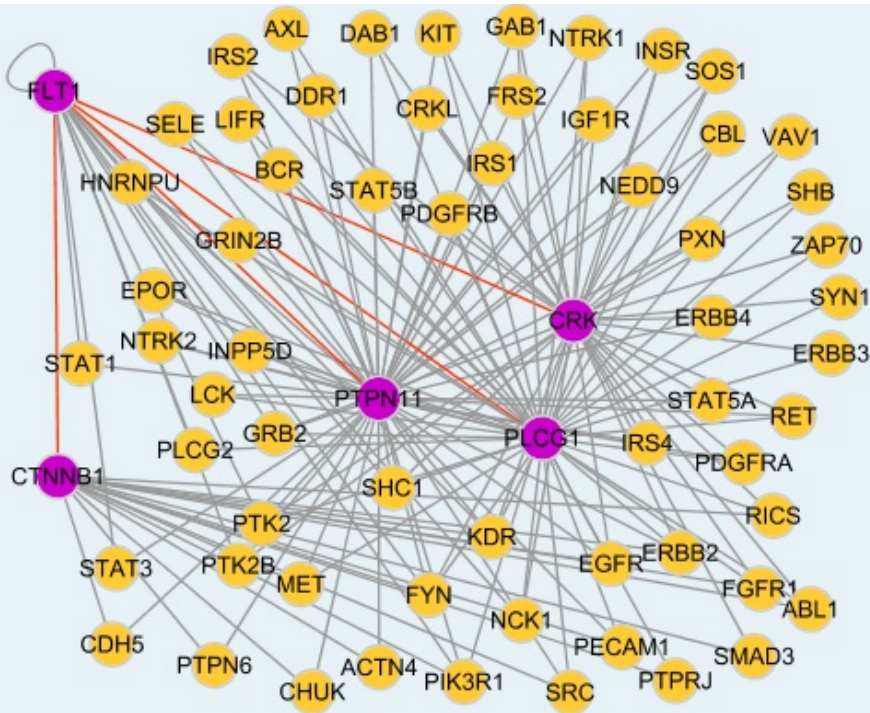
Omim ID: [165070](#)

Gene Ontology: [Hyperlink](#)

Gene Summary: This gene encodes a member of the vascular endothelial growth factor receptor (VEGFR) family. VEGFR family members are receptor tyrosine kinases (RTKs) which contain an extracellular ligand-binding region with seven immunoglobulin (Ig)-like domains, a transmembrane segment, and a tyrosine kinase (TK) domain within the cytoplasmic domain. This protein binds to VEGFR-A, VEGFR-B and placental growth factor and plays an important role in angiogenesis and vasculogenesis. Expression of this receptor is found in vascular endothelial cells, placental trophoblast cells and peripheral blood monocytes. Multiple transcript variants encoding different isoforms have been found for this gene. Isoforms include a full-length transmembrane receptor isoform and shortened, soluble isoforms. The soluble isoforms are associated with the onset of pre-eclampsia

**Other
Designations:** fms-related tyrosine kinase 1, soluble VEGF receptor 1-14, soluble VEGFR1 variant 2, soluble VEGFR1 variant 21, vascular endothelial growth factor/vascular permeability factor receptor

Interactome



Gene Pathway

[Cytokine-cytokine receptor interaction](#) [Endocytosis](#) [Focal adhesion](#)

Related Disease

[Abortion](#), [Spontaneous Adenocarcinoma](#) [Breast cancer](#) [Breast Neoplasms](#)
[Bronchial Hyperreactivity](#) [Cardiovascular Diseases](#) [Cell Transformation, Neoplastic](#)
[Chorioamnionitis](#) [Colorectal Neoplasms](#) [Diabetes Mellitus, Type 2](#) [Edema](#)
[Esophageal Neoplasms](#) [Fetal Growth Retardation](#) [Fetal Membranes, Premature Rupture](#)
[Genetic Predisposition to Disease](#) [Hypercholesterolemia](#) [Hypersensitivity, Immediate](#)
[Inflammation](#) [Kidney Failure, Chronic](#)

... see more