



SZABO SCANDIC

Part of Europa Biosite

Produktinformation



Forschungsprodukte & Biochemikalien



Zellkultur & Verbrauchsmaterial



Diagnostik & molekulare Diagnostik



Laborgeräte & Service

Weitere Information auf den folgenden Seiten!
See the following pages for more information!



Lieferung & Zahlungsart

siehe unsere [Liefer- und Versandbedingungen](#)

Zuschläge

- Mindermengenzuschlag
- Trockeneiszuschlag
- Gefahrgutzuschlag
- Expressversand

SZABO-SCANDIC HandelsgmbH

Quellenstraße 110, A-1100 Wien

T. +43(0)1 489 3961-0

F. +43(0)1 489 3961-7

mail@szabo-scandic.com

www.szabo-scandic.com

[linkedin.com/company/szaboscandic](https://www.linkedin.com/company/szaboscandic) 

FLT1 purified MaxPab rabbit polyclonal antibody (D01P) MaxPab®

Catalog # : H00002321-D01P

規格 : [100 ug]

[List All](#)

Specification

Product Description: Rabbit polyclonal antibody raised against a full-length human FLT1 protein.

Immunogen: FLT1 (AAH39007.1, 1 a.a. ~ 687 a.a) full-length human protein.

Sequence:
 MVSYWDTGVLLCALLSCLLLTGSSSGSKLKDPPELSLKGQTQHIMQAGQTL
 HLQCRGEEAAHKWSLPEMVSKESERLSITKSACGRNGKQFCSTLTLNTAQ
 ANHTGFYSCKYLAVPTSKKKETESAYIFISDTGRPFVEMYSEIPEIIHMTEG
 RELVIPCRVTSNITVTLKKFPLDTLIPDGKRIIWDSRKGFIISNATYKEIGLL
 TCEATVNGHLYKTNLTHRQTNTIIDVQISTPRPVKLLRGHTLVLNCTATT
 PLNTRVQMTWSYPDEKNKRASVRRRIDQSNSHANIFYSLTIDKMQNKDK
 GLYTCRVRSGPSFKSVNTSVHIYDKAFITVKHRKQVLETVAGKRSYRLS
 MKVKAFPSPSEVWVKDGLPATEKSARYLTRGYSLIKDVTEDAGNYTILL
 SIKQSNVFNKLTATLIVNVKQIYEKAVSSFDPALYPLGSRQILTCTAYGI
 PQPTIKWFVHPCNHNHSEARCDFCSNNEESFILDADSNMGNRIESITQRM
 AIEGKNKMASTLVVADSRISGIYICIASNKVGTVGRNISFYITDVPNGFHVNL
 EKMPTEGEDLKLSCVTKFLYRDVTWILLRTVNNRMTMHYSISKQKMAITK
 EHSITLNLTIMNVSLQDSGTYACRARVYTGEEILQKKEITIRGEHCNKKAV
 FSRISKFKSTRNDCTTQSNVKH

Host: Rabbit

Reactivity: Human

Quality Control Testing: Antibody reactive against mammalian transfected lysate.

Storage Buffer: In 1x PBS, pH 7.4

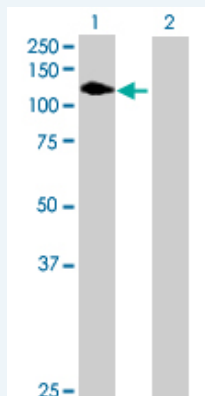
Storage Instruction: Store at -20°C or lower. Aliquot to avoid repeated freezing and thawing.

MSDS: [Download](#)

Datasheet: [Download](#)

Applications

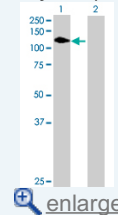
Western Blot (Transfected lysate)



Western Blot analysis of FLT1 expression in transfected 293T cell line (H00002321-T01)

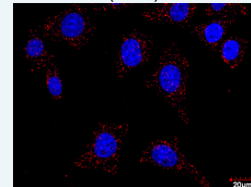
Application Image

Western Blot (Transfected lysate)



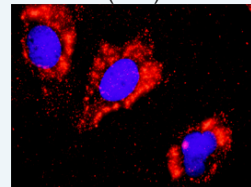
[enlarge](#)

In situ Proximity Ligation Assay (Cell)



[enlarge](#)

In situ Proximity Ligation Assay (Cell)



[enlarge](#)

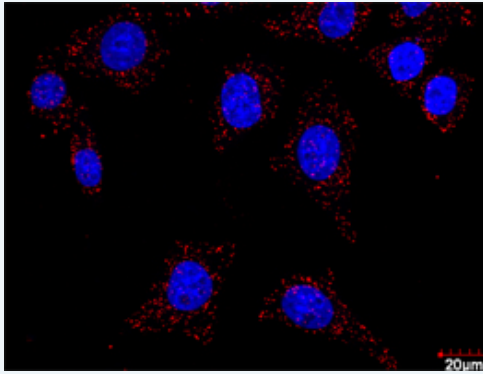
by FLT1 MaxPab polyclonal antibody.

Lane 1: FLT1 transfected lysate(77.50 KDa).

Lane 2: Non-transfected lysate.

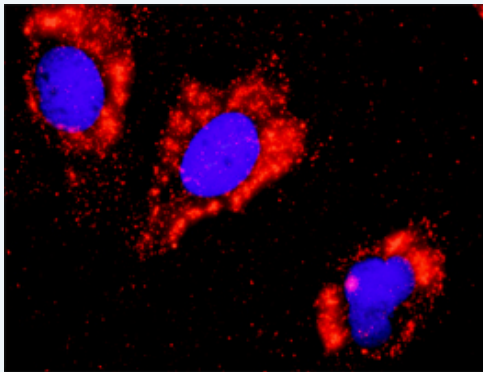
 [Protocol Download](#)

***In situ* Proximity Ligation Assay (Cell)**



Proximity Ligation Analysis of protein-protein interactions between FLT1 and CRKL. HeLa cells were stained with anti-FLT1 rabbit purified polyclonal 1:100 and anti-CRKL mouse monoclonal antibody 1:50. Each red dot represents the detection of protein-protein interaction complex, and nuclei were counterstained with DAPI (blue).

***In situ* Proximity Ligation Assay (Cell)**



Proximity Ligation Analysis of protein-protein interactions between FLT1 and CTNNB1. Huh7 cells were stained with anti-FLT1 rabbit purified polyclonal 1:1200 and anti-CTNNB1 mouse monoclonal antibody 1:50. Each red dot represents the detection of protein-protein interaction complex, and nuclei were counterstained with DAPI (blue).

Gene Information

Entrez GeneID: [2321](#)

GeneBank [BC039007](#)

Accession#:

Protein [AAH39007.1](#)

Accession#:

Gene Name: FLT1

Gene Alias: FLT,VEGFR1

Gene Description: fms-related tyrosine kinase 1 (vascular endothelial growth factor/vascular permeability factor receptor)

Omim ID: [165070](#)

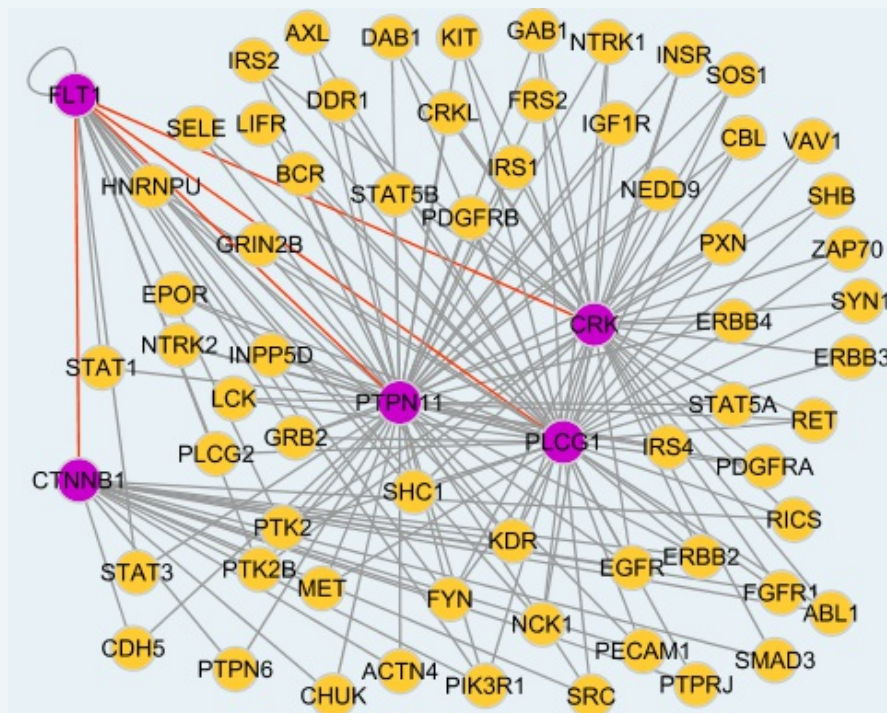
Gene Ontology: [Hyperlink](#)

Gene Summary: This gene encodes a member of the vascular endothelial growth factor receptor (VEGFR) family. VEGFR family members are receptor tyrosine

kinases (RTKs) which contain an extracellular ligand-binding region with seven immunoglobulin (Ig)-like domains, a transmembrane segment, and a tyrosine kinase (TK) domain within the cytoplasmic domain. This protein binds to VEGFR-A, VEGFR-B and placental growth factor and plays an important role in angiogenesis and vasculogenesis. Expression of this receptor is found in vascular endothelial cells, placental trophoblast cells and peripheral blood monocytes. Multiple transcript variants encoding different isoforms have been found for this gene. Isoforms include a full-length transmembrane receptor isoform and shortened, soluble isoforms. The soluble isoforms are associated with the onset of pre-eclampsia

Other Designations: fms-related tyrosine kinase 1, soluble VEGF receptor 1-14, soluble VEGFR1 variant 2, soluble VEGFR1 variant 21, vascular endothelial growth factor/vascular permeability factor receptor

Interactome



Gene Pathway

[Cytokine-cytokine receptor interaction](#) [Endocytosis](#) [Focal adhesion](#)

Related Disease

[Abortion](#), [Spontaneous Adenocarcinoma Breast cancer](#) [Breast Neoplasms](#) [Bronchial Hyperreactivity Cardiovascular Diseases](#) [Cell Transformation, Neoplastic](#) [Chorioamnionitis Colorectal Neoplasms](#) [Diabetes Mellitus, Type 2](#) [Edema](#) [Esophageal Neoplasms Fetal Growth Retardation](#) [Fetal Membranes, Premature Rupture](#) [Genetic Predisposition to Disease](#) [Hypercholesterolemia](#) [Hypersensitivity, Immediate](#) [Inflammation](#) [Kidney Failure, Chronic](#)

... see more