



# SZABO SCANDIC

Part of Europa Biosite

## Produktinformation



Forschungsprodukte & Biochemikalien



Zellkultur & Verbrauchsmaterial



Diagnostik & molekulare Diagnostik



Laborgeräte & Service

Weitere Information auf den folgenden Seiten!  
See the following pages for more information!



### Lieferung & Zahlungsart

siehe unsere [Liefer- und Versandbedingungen](#)

### Zuschläge

- Mindermengenzuschlag
- Trockeneiszuschlag
- Gefahrgutzuschlag
- Expressversand

### SZABO-SCANDIC HandelsgmbH

Quellenstraße 110, A-1100 Wien

T. +43(0)1 489 3961-0

F. +43(0)1 489 3961-7

[mail@szabo-scandic.com](mailto:mail@szabo-scandic.com)

[www.szabo-scandic.com](http://www.szabo-scandic.com)

[linkedin.com/company/szaboscandic](https://www.linkedin.com/company/szaboscandic) 

## FLT3LG monoclonal antibody (M07), clone 4C4

Catalog # : H00002323-M07

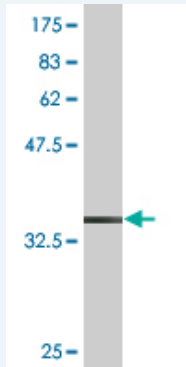
規格 : [ 100 ug ]

[List All](#)

### Specification

<b>Product Description:</b>	Mouse monoclonal antibody raised against a partial recombinant FLT3LG.
<b>Immunogen:</b>	FLT3LG (NP_001450, 27 a.a. ~ 136 a.a) partial recombinant protein with GST tag. MW of the GST tag alone is 26 KDa.
<b>Sequence:</b>	TQDCSFQHSPISSDFAVKIRELSDYLLQDYPTVASNLQDEELCGGLWR LVLAQRWMERLKTAVGSKMQGLLERVNTIHFVTKCAFQPPPSCLRFV QTNISRLLQETSE
<b>Host:</b>	Mouse
<b>Reactivity:</b>	Human
<b>Isotype:</b>	IgG2a Kappa

**Quality Control Testing:** Antibody Reactive Against Recombinant Protein.



Western Blot detection against Immunogen (37.84 KDa) .

**Storage Buffer:** In 1x PBS, pH 7.4

**Storage Instruction:** Store at -20°C or lower. Aliquot to avoid repeated freezing and thawing.

**MSDS:** [Download](#)

**Datasheet:** [Download](#)

### Applications

**Western Blot (Recombinant protein)**

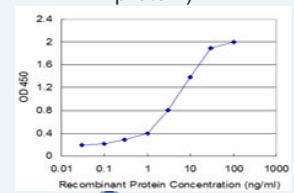
[Protocol Download](#)

**Sandwich ELISA (Recombinant protein)**

### Application Image

Western Blot (Recombinant protein)

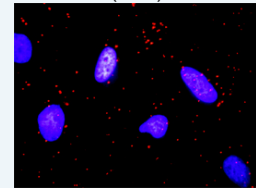
Sandwich ELISA (Recombinant protein)



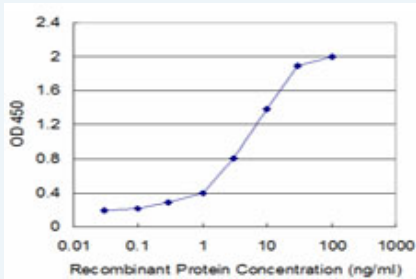
[enlarge](#)

ELISA

*In situ* Proximity Ligation Assay (Cell)



[enlarge](#)

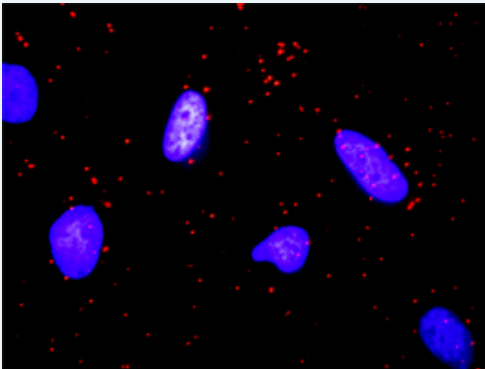


Detection limit for recombinant GST tagged FLT3LG is approximately 0.03ng/ml as a capture antibody.

Protocol Download

## ELISA

### *In situ* Proximity Ligation Assay (Cell)



Proximity Ligation Analysis of protein-protein interactions between KITLG and FLT3LG. HeLa cells were stained with anti-KITLG rabbit purified polyclonal 1:1200 and anti-FLT3LG mouse monoclonal antibody 1:50. Each red dot represents the detection of protein-protein interaction complex, and nuclei were counterstained with DAPI (blue).

## Gene Information

Entrez GeneID: [2323](#)

GeneBank [NM\\_001459](#)  
Accession#:

Protein [NP\\_001450](#)  
Accession#:

Gene Name: FLT3LG

Gene Alias: FL

Gene Description: fms-related tyrosine kinase 3 ligand

Omim ID: [600007](#)

Gene Ontology: [Hyperlink](#)

Other Designations: -

## Interactome



### Gene Pathway

[Cytokine-cytokine receptor interaction](#) [Hematopoietic cell lineage](#) [Pathways in cancer](#)

### Related Disease

[Genetic Predisposition to Disease](#) [Ovarian Neoplasms](#)

[服務條款](#) | [隱私權政策](#) | [著作及商標](#) | [網站地圖](#)

©2016 亞諾法生技股份有限公司 Abnova Corporation. 版權所有.