



SZABO SCANDIC

Part of Europa Biosite

Produktinformation



Forschungsprodukte & Biochemikalien



Zellkultur & Verbrauchsmaterial



Diagnostik & molekulare Diagnostik



Laborgeräte & Service

Weitere Information auf den folgenden Seiten!
See the following pages for more information!



Lieferung & Zahlungsart

siehe unsere [Liefer- und Versandbedingungen](#)

Zuschläge

- Mindermengenzuschlag
- Trockeneiszuschlag
- Gefahrgutzuschlag
- Expressversand

SZABO-SCANDIC HandelsgmbH

Quellenstraße 110, A-1100 Wien

T. +43(0)1 489 3961-0

F. +43(0)1 489 3961-7

mail@szabo-scandic.com

www.szabo-scandic.com

[linkedin.com/company/szaboscandic](https://www.linkedin.com/company/szaboscandic) 

GSK3B purified MaxPab rabbit polyclonal antibody (D01P) MaxPab®

Catalog # : H00002932-D01P

規格 : [100 ug]

[List All](#)

Specification

Product Description: Rabbit polyclonal antibody raised against a full-length human GSK3B protein.

Immunogen: GSK3B (NP_002084.2, 1 a.a. ~ 433 a.a) full-length human protein.

Sequence:
 MSGRPRTTSFAESCKPVQQPSAFGSMKVS RDKDGSKVTTVATPGQG
 PDRPQEVSYTDTKVINGSGFVYQAKLCDSGELVAIKKVLQDKRFKNR
 ELQIMRKL DHCNIVRLRYFFYSSGEKKDEVYLNLVLDYVPETVYRVARHY
 SRAKQTLPVYVKLYMYQLFRSLAYIHSFGICH RDIKPQNLLDPDTAVLKL
 CDFGSAKQLVRGEPNVS YICSRYRAPELIFGATDYTSSIDVWSAGCVLA
 ELLGQPIFPDGSVDQLVEIKVLGTPTR EIREMNPNYTEFKFPQIKAH
 PWTKDSSGTGHFTSGVRVFRPRT PPEAIALCSRLLEYTPARLTPLEAC
 AHSFFDEL RDPNVKLPNGRDTPALFNFTTQELSSNPPLATILIPPHARIQA
 AASTPTNATAASDANTGDRGQT NNAASASASNST

Host: Rabbit

Reactivity: Human, Mouse

Quality Control Testing: Antibody reactive against mammalian transfected lysate.

Storage Buffer: In 1x PBS, pH 7.4

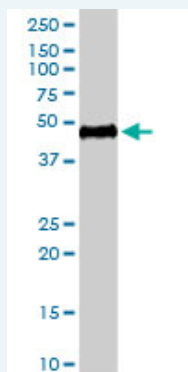
Storage Instruction: Store at -20°C or lower. Aliquot to avoid repeated freezing and thawing.

MSDS: [Download](#)

Datasheet: [Download](#)

Applications

Western Blot (Tissue lysate)



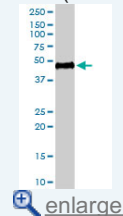
GSK3B MaxPab rabbit polyclonal antibody. Western Blot analysis of GSK3B expression in mouse stomach.

[Protocol Download](#)

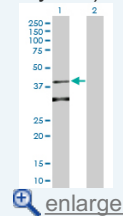
Western Blot (Transfected lysate)

Application Image

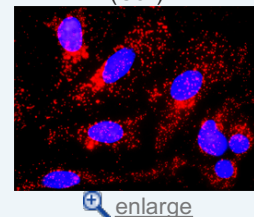
Western Blot (Tissue lysate)

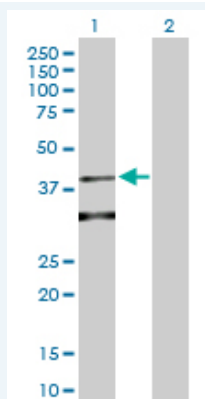


Western Blot (Transfected lysate)



In situ Proximity Ligation Assay (Cell)



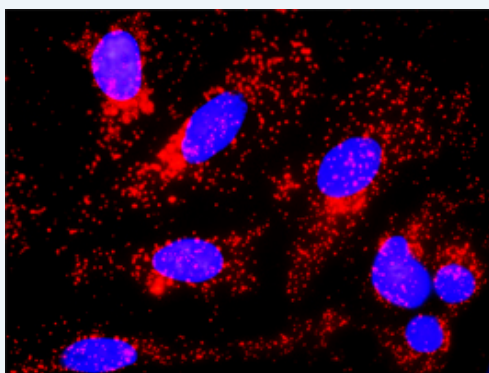


Western Blot analysis of GSK3B expression in transfected 293T cell line ([H00002932-T05](#)) by GSK3B MaxPab polyclonal antibody.

Lane 1: GSK3B transfected lysate(48.00 KDa).
Lane 2: Non-transfected lysate.

Protocol Download

In situ Proximity Ligation Assay (Cell)



Proximity Ligation Analysis of protein-protein interactions between GSK3B and CTNNB1. HeLa cells were stained with anti-GSK3B rabbit purified polyclonal 1:1200 and anti-CTNNB1 mouse monoclonal antibody 1:50. Each red dot represents the detection of protein-protein interaction complex, and nuclei were counterstained with DAPI (blue).

Gene Information

Entrez GeneID: [2932](#)

GeneBank [NM_002093](#)
Accession#:

Protein [NP_002084.2](#)
Accession#:

Gene Name: GSK3B

Gene Alias: -

Gene Description: glycogen synthase kinase 3 beta

Omim ID: [605004](#)

Gene Ontology: [Hyperlink](#)

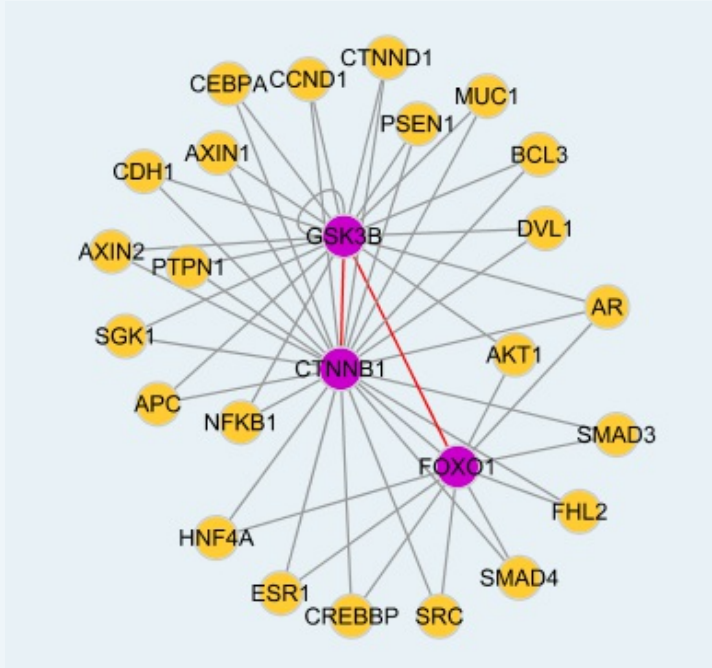
Gene Summary: The protein encoded by this gene is a serine-threonine kinase, belonging to the glycogen synthase kinase subfamily. It is involved in energy metabolism, neuronal cell development, and body pattern formation. Polymorphisms in this gene have been implicated in modifying risk of Parkinson disease, and studies in mice show that overexpression of this gene may be relevant to the pathogenesis of Alzheimer disease. Alternatively spliced transcript variants encoding

different isoforms have been found for this gene

Other Designations: GSK3beta isoform, glycogen synthase kinase-3 beta

Designations:

Interactome



Gene Pathway

[Alzheimer's disease](#) [Axon guidance](#) [B cell receptor signaling pathway](#) [Basal cell carcinoma](#) [Cell cycle](#) [Chemokine signaling pathway](#) [Colorectal cancer](#) [Endometrial cancer](#) [ErbB signaling pathway](#) [Focal adhesion](#) [Hedgehog signaling pathway](#) [Insulin signaling pathway](#) [Melanogenesis](#) [Neurotrophin signaling pathway](#) [Pathways in cancer](#) [Prostate cancer](#) [T cell receptor signaling pathway](#) [Wnt signaling pathway](#)

Related Disease

[Adenocarcinoma](#) [Alzheimer Disease](#) [Alzheimer disease](#) [Amphetamine-Related Disorders](#) [Anorexia Nervosa](#) [Bipolar Disorder](#) [Bone Diseases](#) [Breast cancer](#) [Breast Neoplasms](#) [Bulimia](#) [Cardiovascular Diseases](#) [Cognition](#) [Dementia](#) [Depressive Disorder](#) [Depressive Disorder, Major](#) [Diabetes Mellitus, Type 2](#) [Disease Models, Animal](#) [Disease Progression](#) [Drug Toxicity](#)

... see more

[服務條款](#) | [隱私權政策](#) | [著作及商標](#) | [網站地圖](#)

©2016 亞諾法生技股份有限公司 Abnova Corporation. 版權所有.