



SZABO SCANDIC

Part of Europa Biosite

Produktinformation



Forschungsprodukte & Biochemikalien



Zellkultur & Verbrauchsmaterial



Diagnostik & molekulare Diagnostik



Laborgeräte & Service

Weitere Information auf den folgenden Seiten!
See the following pages for more information!



Lieferung & Zahlungsart

siehe unsere [Liefer- und Versandbedingungen](#)

Zuschläge

- Mindermengenzuschlag
- Trockeneiszuschlag
- Gefahrgutzuschlag
- Expressversand

SZABO-SCANDIC HandelsgmbH

Quellenstraße 110, A-1100 Wien

T. +43(0)1 489 3961-0

F. +43(0)1 489 3961-7

mail@szabo-scandic.com

www.szabo-scandic.com

[linkedin.com/company/szaboscandic](https://www.linkedin.com/company/szaboscandic) 

GSK3B monoclonal antibody (M04), clone 1H3

Catalog # : H00002932-M04

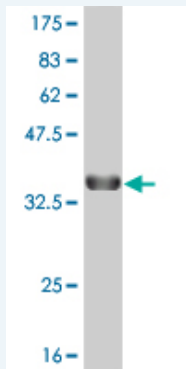
規格 : [100 ug]

[List All](#)

Specification

Product Description:	Mouse monoclonal antibody raised against a partial recombinant GSK3B.
Immunogen:	GSK3B (NP_002084, 1 a.a. ~ 100 a.a) partial recombinant protein with GST tag. MW of the GST tag alone is 26 KDa.
Sequence:	MSGRPRTTSFAESCKPVQQPSAFGSMKVS RDKDGSKVTTT VATPGQG PDRPQEVSYTDTKVIGNGSFGVVYQAKLCDSGELVAIKKVLQDKRFKNR ELQI
Host:	Mouse
Reactivity:	Human
Isotype:	IgG2a Kappa

Quality Control Testing: Antibody Reactive Against Recombinant Protein.



Western Blot detection against Immunogen (36.74 KDa) .

Storage Buffer: In 1x PBS, pH 7.4

Storage Instruction: Store at -20°C or lower. Aliquot to avoid repeated freezing and thawing.

MSDS: [Download](#)

Datasheet: [Download](#)

Applications

Western Blot (Recombinant protein)

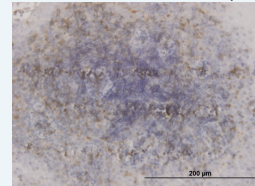
[Protocol Download](#)

Immunohistochemistry (Formalin/PFA-fixed paraffin-embedded sections)

Application Image

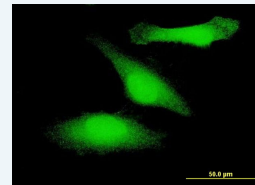
Western Blot (Recombinant protein)

Immunohistochemistry (Formalin/PFA-fixed paraffin-embedded sections)



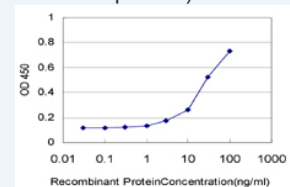
[enlarge](#)

Immunofluorescence



[enlarge](#)

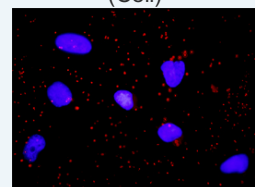
Sandwich ELISA (Recombinant protein)



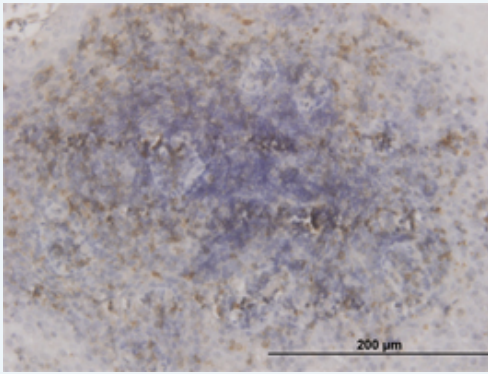
[enlarge](#)

ELISA

In situ Proximity Ligation Assay (Cell)



[enlarge](#)

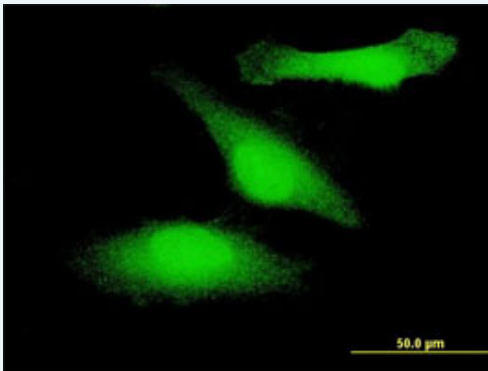


[enlarge this image](#)

Immunoperoxidase of monoclonal antibody to GSK3B on formalin-fixed paraffin-embedded human tonsil. [antibody concentration 3 ug/ml]

[Protocol Download](#)

Immunofluorescence

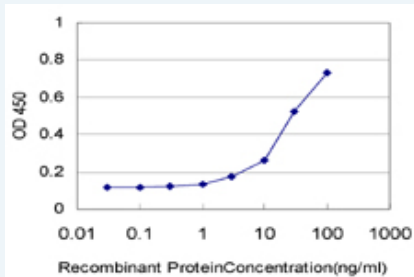


[enlarge this image](#)

Immunofluorescence of monoclonal antibody to GSK3B on HeLa cell . [antibody concentration 10 ug/ml]

[Protocol Download](#)

Sandwich ELISA (Recombinant protein)

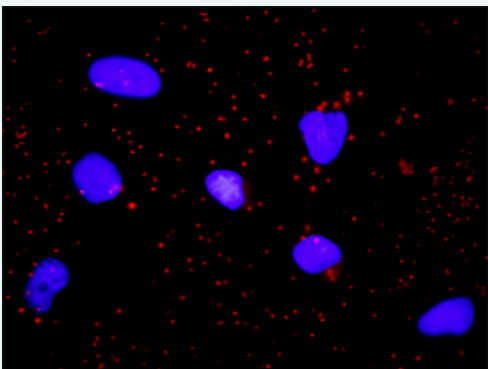


Detection limit for recombinant GST tagged GSK3B is approximately 3ng/ml as a capture antibody.

[Protocol Download](#)

ELISA

In situ Proximity Ligation Assay (Cell)



Proximity Ligation Analysis of protein-protein interactions between SMAD1 and GSK3B. HeLa cells were stained with anti-SMAD1 rabbit purified polyclonal 1:1200 and anti-GSK3B mouse monoclonal antibody 1:50. Each red dot represents the detection of protein-protein interaction complex, and nuclei were counterstained with DAPI (blue).

Gene Information

Entrez GeneID: [2932](#)

GeneBank Accession#: [NM_002093](#)

Protein Accession#: [NP_002084](#)

Gene Name: GSK3B

Gene Alias: -

Gene Description: glycogen synthase kinase 3 beta

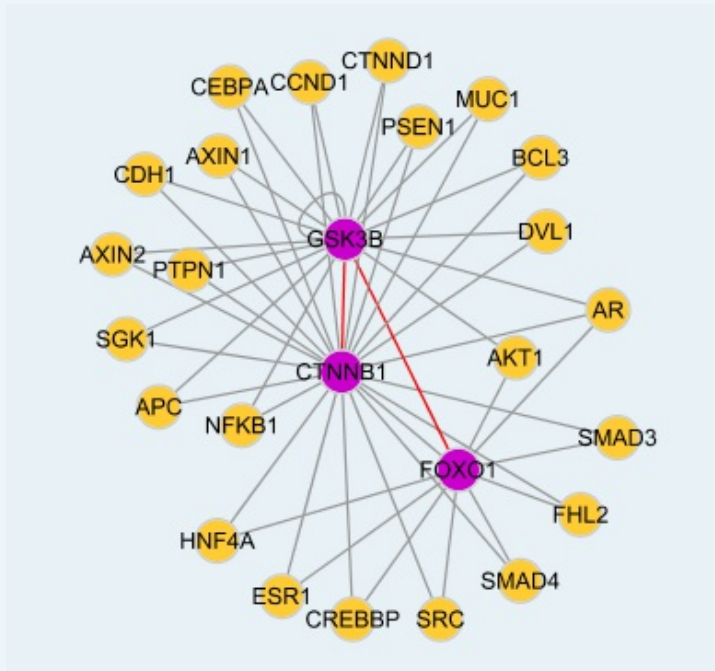
Omim ID: [605004](#)

Gene Ontology: [Hyperlink](#)

Gene Summary: The protein encoded by this gene is a serine-threonine kinase, belonging to the glycogen synthase kinase subfamily. It is involved in energy metabolism, neuronal cell development, and body pattern formation. Polymorphisms in this gene have been implicated in modifying risk of Parkinson disease, and studies in mice show that overexpression of this gene may be relevant to the pathogenesis of Alzheimer disease. Alternatively spliced transcript variants encoding different isoforms have been found for this gene

Other Designations: GSK3beta isoform, glycogen synthase kinase-3 beta

Interactome



Gene Pathway

[Alzheimer's disease](#) [Axon guidance](#) [B cell receptor signaling pathway](#) [Basal cell carcinoma](#) [Cell cycle](#) [Chemokine signaling pathway](#) [Colorectal cancer](#) [Endometrial cancer](#) [ErbB signaling pathway](#) [Focal adhesion](#) [Hedgehog signaling pathway](#) [Insulin signaling pathway](#) [Melanogenesis](#) [Neurotrophin signaling pathway](#) [Pathways in cancer](#) [Prostate cancer](#) [T cell receptor signaling pathway](#) [Wnt signaling pathway](#)

Related Disease

[Adenocarcinoma](#) [Alzheimer Disease](#) [Alzheimer disease](#) [Amphetamine-Related Disorders](#)
[Anorexia Nervosa](#) [Bipolar Disorder](#) [Bone Diseases](#) [Breast cancer](#) [Breast Neoplasms](#)
[Bulimia](#) [Cardiovascular Diseases](#) [Cognition](#) [Dementia](#) [Depressive Disorder](#)
[Depressive Disorder, Major](#) [Diabetes Mellitus, Type 2](#) [Disease Models, Animal](#)
[Disease Progression](#) [Drug Toxicity](#)

... see more

[服務條款](#) | [隱私權政策](#) | [著作及商標](#) | [網站地圖](#)

©2016 亞諾法生技股份有限公司 Abnova Corporation. 版權所有.