



SZABO SCANDIC

Part of Europa Biosite

Produktinformation



Forschungsprodukte & Biochemikalien



Zellkultur & Verbrauchsmaterial



Diagnostik & molekulare Diagnostik



Laborgeräte & Service

Weitere Information auf den folgenden Seiten!
See the following pages for more information!



Lieferung & Zahlungsart

siehe unsere [Liefer- und Versandbedingungen](#)

Zuschläge

- Mindermengenzuschlag
- Trockeneiszuschlag
- Gefahrgutzuschlag
- Expressversand

SZABO-SCANDIC HandelsgmbH

Quellenstraße 110, A-1100 Wien

T. +43(0)1 489 3961-0

F. +43(0)1 489 3961-7

mail@szabo-scandic.com

www.szabo-scandic.com

[linkedin.com/company/szaboscandic](https://www.linkedin.com/company/szaboscandic) 

GSR MaxPab mouse polyclonal antibody (B01) MaxPab®

Catalog # : H00002936-B01

規格 : [50 uL]

[List All](#)

Specification

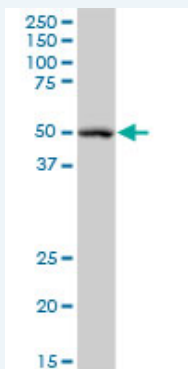
Product Description:	Mouse polyclonal antibody raised against a full-length human GSR protein.
Immunogen:	GSR (NP_000628.2, 1 a.a. ~ 522 a.a) full-length human protein.
Sequence:	MALLPRALSAGAGPSWRRRAARAFRGFLLLLPEPAALTRALSRAMACRQ EPQPQGPppAAGAVASYDYLVIggGSGGLASARRAAELGARAaVESH KLGgTcVnVgCvPKKVMWNTAVHSEFMHDHADYGFPSCEGKFNRVVIK EKRDAYVSRlnAIYQnNLTKSHIEIRGHAAFTSDPKPTIEVSGKkYTAPHILl ATGgMPSTPHESQIPGASLGITSDGFFQLEELPGRSVIVGAGYIAVEMAGI LSALGSKTSLMIRHDKVLRsFDsMISTNCTEELENAGVEVLKFSQVKEVK KTLsGLeVSMVTAVPGRLPVMTMIPDvDCLLWAIGRVPNTKDLsLNKLGl QTDDKGHIIVDEFQNTNVKGIYAVGDVCGKALLTPVAIAAGRKLahRlFEY KEDSKLDYnNIPTVVFShPPiGTVGLTEDEAIHKYGIENVKTYSTSFTPMYH AVTKRKTkCVMKMCANKEEKVVGiHMqGLGCDEMLQGFaVAVKMGAT KADFDNTVAIHPTsSEELVTLR
Host:	Mouse
Reactivity:	Human
Quality Control Testing:	Antibody reactive against mammalian transfected lysate.
Storage Buffer:	No additive
Storage Instruction:	Store at -20°C or lower. Aliquot to avoid repeated freezing and thawing.
Note:	For IHC and IF applications, antibody purification with Protein A will be needed prior to use.

MSDS: [Download](#)

Datasheet: [Download](#)

Applications

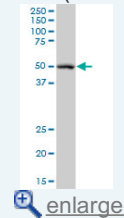
Western Blot (Tissue lysate)



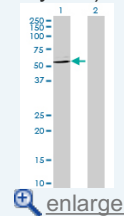
GSR MaxPab polyclonal antibody. Western Blot analysis of GSR expression in human placenta.

Application Image

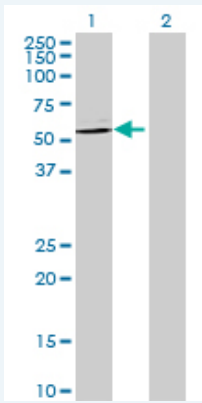
Western Blot (Tissue lysate)



Western Blot (Transfected lysate)



Western Blot (Transfected lysate)



Western Blot analysis of GSR expression in transfected 293T cell line ([H00002936-T01](#)) by GSR MaxPab polyclonal antibody.

Lane 1: GSR transfected lysate(57.42 KDa).

Lane 2: Non-transfected lysate.

Gene Information

Entrez GeneID: [2936](#)

GeneBank [NM_000637.2](#)
Accession#:

Protein [NP_000628.2](#)
Accession#:

Gene Name: GSR

Gene Alias: MGC78522

Gene [glutathione reductase](#)
Description:

Omim ID: [138300](#)

Gene Ontology: [Hyperlink](#)

Other -
Designations:

Gene Pathway

[Glutathione metabolism](#)

Related Disease

[Alzheimer Disease](#) [Alzheimer disease](#) [Arsenic Poisoning](#) [Breast cancer](#) [Breast Neoplasms](#)
[Carcinoma, Ductal, Breast](#) [Carcinoma, Lobular](#) [Cardiovascular Diseases](#) [Cognition](#)
[Coronary Artery Disease](#) [Diabetes Mellitus, Type 2](#) [DNA Damage](#) [Edema](#)
[Genetic Predisposition to Disease](#) [Kidney Failure, Chronic](#) [Lung Neoplasms](#)
[Tobacco Use Disorder](#)