



# SZABO SCANDIC

Part of Europa Biosite

## Produktinformation



Forschungsprodukte & Biochemikalien



Zellkultur & Verbrauchsmaterial



Diagnostik & molekulare Diagnostik



Laborgeräte & Service

Weitere Information auf den folgenden Seiten!  
See the following pages for more information!



### Lieferung & Zahlungsart

siehe unsere [Liefer- und Versandbedingungen](#)

### Zuschläge

- Mindermengenzuschlag
- Trockeneiszuschlag
- Gefahrgutzuschlag
- Expressversand

### SZABO-SCANDIC HandelsgmbH

Quellenstraße 110, A-1100 Wien

T. +43(0)1 489 3961-0

F. +43(0)1 489 3961-7

[mail@szabo-scandic.com](mailto:mail@szabo-scandic.com)

[www.szabo-scandic.com](http://www.szabo-scandic.com)

[linkedin.com/company/szaboscandic](https://www.linkedin.com/company/szaboscandic) 

## GSTA1 monoclonal antibody (M08), clone 1F9

Catalog # : H00002938-M08

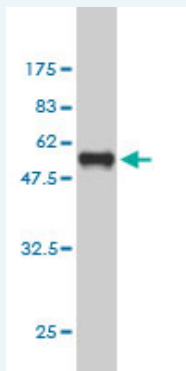
規格 : [ 100 ug ]

[List All](#)

### Specification

<b>Product Description:</b>	Mouse monoclonal antibody raised against a full-length recombinant GSTA1.
<b>Immunogen:</b>	GSTA1 (AAH53578.1, 1 a.a. ~ 222 a.a) full-length recombinant protein with GST tag. MW of the GST tag alone is 26 KDa.
<b>Sequence:</b>	MAEKPKLHYFNARGRMESTRWLLAAAGVEFEKFIKSAEDLDKLRNDGY LMFQQVPMVEIDGMKLVQTRAILNYIASKYNLYGKDIKERALIDMYIEGIAD LGEMILLPVCPPEEKDAKLALIKEKIKNRYFPFAFEKVLKSHGQDYLVGNK LSRADIHLVELLYVEELDSSLISSFPLLKALKTRISNLPVKKFLQPGSPR KPPMDEKSLEEARLIFRF
<b>Host:</b>	Mouse
<b>Reactivity:</b>	Human
<b>Isotype:</b>	IgG1 kappa

**Quality Control Testing:** Antibody Reactive Against Recombinant Protein.



Western Blot detection against Immunogen (50.16 KDa) .

**Storage Buffer:** In 1x PBS, pH 7.4

**Storage Instruction:** Store at -20°C or lower. Aliquot to avoid repeated freezing and thawing.

**MSDS:** [Download](#)

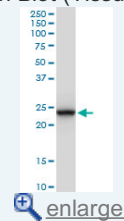
**Datasheet:** [Download](#)

### Applications

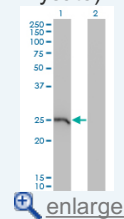
**Western Blot (Tissue lysate)**

### Application Image

Western Blot (Tissue lysate)

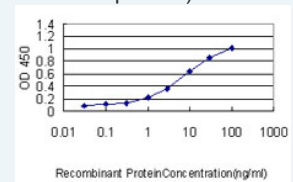


Western Blot (Transfected lysate)

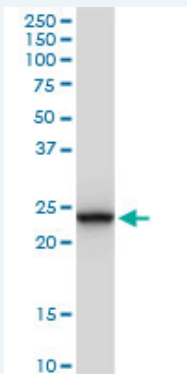


Western Blot (Recombinant protein)

Sandwich ELISA (Recombinant protein)



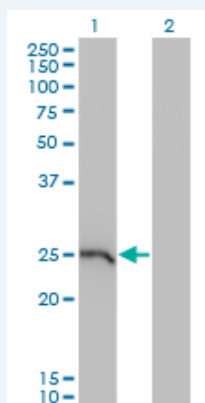
ELISA



GSTA1 monoclonal antibody (M08), clone 1F9. Western Blot analysis of GSTA1 expression in human liver.

[Protocol Download](#)

#### Western Blot (Transfected lysate)



Western Blot analysis of GSTA1 expression in transfected 293T cell line by GSTA1 monoclonal antibody (M08), clone 1F9.

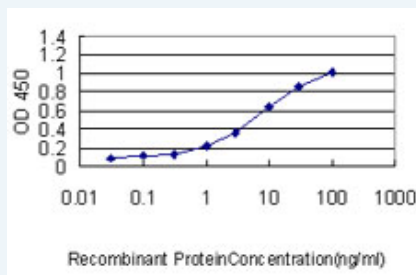
Lane 1: GSTA1 transfected lysate(26 kDa).  
Lane 2: Non-transfected lysate.

[Protocol Download](#)

#### Western Blot (Recombinant protein)

[Protocol Download](#)

#### Sandwich ELISA (Recombinant protein)



Detection limit for recombinant GST tagged GSTA1 is approximately 0.1ng/ml as a capture antibody.

[Protocol Download](#)

#### ELISA

#### Gene Information

Entrez GeneID: [2938](#)

GeneBank [BC053578.1](#)  
Accession#:

Protein [AAH53578.1](#)  
Accession#:

**Gene Name:** GSTA1

**Gene Alias:** GST2,GSTA1-1,GTH1,MGC131939

**Gene Description:** glutathione S-transferase alpha 1

**Omim ID:** [138359](#)

**Gene Ontology:** [Hyperlink](#)

**Gene Summary:** Cytosolic and membrane-bound forms of glutathione S-transferase are encoded by two distinct supergene families. These enzymes function in the detoxification of electrophilic compounds, including carcinogens, therapeutic drugs, environmental toxins and products of oxidative stress, by conjugation with glutathione. The genes encoding these enzymes are known to be highly polymorphic. These genetic variations can change an individual's susceptibility to carcinogens and toxins as well as affect the toxicity and efficacy of some drugs. At present, eight distinct classes of the soluble cytoplasmic mammalian glutathione S-transferases have been identified: alpha, kappa, mu, omega, pi, sigma, theta and zeta. This gene encodes a glutathione S-transferase belonging to the alpha class. The alpha class genes, located in a cluster mapped to chromosome 6, are the most abundantly expressed glutathione S-transferases in liver. In addition to metabolizing bilirubin and certain anti-cancer drugs in the liver, the alpha class of these enzymes exhibit glutathione peroxidase activity thereby protecting the cells from reactive oxygen species and the products of peroxidation. [provided by RefSeq]

**Other Designations:** GST, class alpha, 1,GST-epsilon,OTTHUMP00000016611,S-(hydroxyalkyl)glutathione lyase A1,glutathione S-alkyltransferase A1,glutathione S-aryltransferase A1,glutathione S-transferase 2,glutathione S-transferase A1,glutathione S-transferase Ha subunit 1

### Gene Pathway

[Drug metabolism - cytochrome P450](#) [Glutathione metabolism](#)  
[Metabolism of xenobiotics by cytochrome P450](#)

### Related Disease

[Acute Disease](#) [Adenoma](#) [Adenomatous Polyposis Coli](#) [Alzheimer Disease](#)  
[Alzheimer disease](#) [Amphetamine-Related Disorders](#) [Arsenic Poisoning](#) [Asthma](#)  
[Breast cancer](#) [Breast Neoplasms](#) [Carcinoma](#) [Carcinoma, Ductal, Breast](#)  
[Carcinoma, Hepatocellular](#) [Carcinoma, Lobular](#) [Carcinoma, Non-Small-Cell Lung](#)  
[Carcinoma, Small Cell](#) [Carcinoma, Squamous Cell](#) [Chromosome Aberrations](#)  
[Chromosome Deletion](#)

... see more