



SZABO SCANDIC

Part of Europa Biosite

Produktinformation



Forschungsprodukte & Biochemikalien



Zellkultur & Verbrauchsmaterial



Diagnostik & molekulare Diagnostik



Laborgeräte & Service

Weitere Information auf den folgenden Seiten!
See the following pages for more information!



Lieferung & Zahlungsart

siehe unsere [Liefer- und Versandbedingungen](#)

Zuschläge

- Mindermengenzuschlag
- Trockeneiszuschlag
- Gefahrgutzuschlag
- Expressversand

SZABO-SCANDIC HandelsgmbH

Quellenstraße 110, A-1100 Wien

T. +43(0)1 489 3961-0

F. +43(0)1 489 3961-7

mail@szabo-scandic.com

www.szabo-scandic.com

[linkedin.com/company/szaboscandic](https://www.linkedin.com/company/szaboscandic) 

GSTA2 293T Cell Transient Overexpression Lysate(Denatured)

Catalog # : H00002939-T01

規格 : [100 uL]

[List All](#)

Specification

Transfected Cell Line: 293T

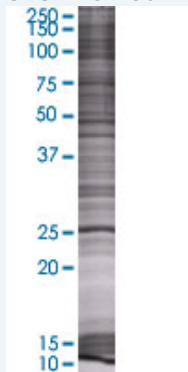
Plasmid: pCMV-GSTA2 full-length

Host: Human

Theoretical MW (kDa): 24.53

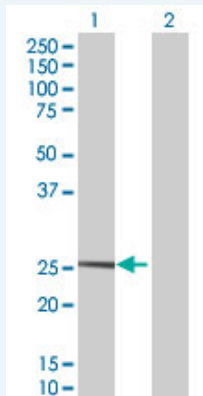
Quality Control Testing: Transient overexpression cell lysate was tested with Anti-GSTA2 antibody ([H00002939-B01](#)) by Western Blots.

SDS-PAGE Gel



GSTA2 transfected lysate.

Western Blot



Lane 1: GSTA2 transfected lysate (24.53 KDa)

Lane 2: Non-transfected lysate.

Storage Buffer: 1X Sample Buffer (50 mM Tris-HCl, 2% SDS, 10% glycerol, 300 mM 2-mercaptoethanol, 0.01% Bromophenol blue)

Storage Instruction: Store at -80°C. Aliquot to avoid repeated freezing and thawing.

MSDS:  [Download](#)

Applications

Application Image

Western Blot

Western Blot

Gene Information

Entrez GeneID: [2939](#)

GeneBank [NM_000846.3](#)
Accession#:

Protein [NP_000837.2](#)
Accession#:

Gene Name: [GSTA2](#)

Gene Alias: [GST2,GSTA2-2,GTA2,GTH2,MGC10525](#)

Gene Description: [glutathione S-transferase alpha 2](#)

Omim ID: [138360](#)

Gene Ontology: [Hyperlink](#)

Gene Summary: Cytosolic and membrane-bound forms of glutathione S-transferase are encoded by two distinct supergene families. These enzymes function in the detoxification of electrophilic compounds, including carcinogens, therapeutic drugs, environmental toxins and products of oxidative stress, by conjugation with glutathione. The genes encoding these enzymes are known to be highly polymorphic. These genetic variations can change an individual's susceptibility to carcinogens and toxins as well as affect the toxicity and efficacy of some drugs. At present, eight distinct classes of the soluble cytoplasmic mammalian glutathione S-transferases have been identified: alpha, kappa, mu, omega, pi, sigma, theta and zeta. This gene encodes a glutathione S-transferase belonging to the alpha class. The alpha class genes, located in a cluster mapped to chromosome 6, are the most abundantly expressed glutathione S-transferases in liver. In addition to metabolizing bilirubin and certain anti-cancer drugs in the liver, the alpha class of these enzymes exhibit glutathione peroxidase activity thereby protecting the cells from reactive oxygen species and the products of peroxidation. [provided by RefSeq]

Other Designations: [GST, class alpha, 2,GST-gamma,HA subunit](#)
[2,OTTHUMP00000017883,S-\(hydroxyalkyl\)glutathione lyase](#)
[A2,glutathione S-alkyltransferase A2,glutathione S-alkyltransferase](#)
[A2,glutathione S-aryltransferase A2,glutathione S-transferase](#)
[2,glutathione S-transferase](#)

Gene Pathway

[Drug metabolism - cytochrome P450](#) [Glutathione metabolism](#)
[Metabolism of xenobiotics by cytochrome P450](#)

Related Disease

[Adenocarcinoma](#) [Alzheimer Disease](#) [Alzheimer disease](#) [Breast cancer](#) [Breast Neoplasms](#)
[Cardiovascular Diseases](#) [Cognition](#) [Colorectal Neoplasms](#) [Diabetes Mellitus, Type 2](#)
[Edema](#) [Esophageal Neoplasms](#) [Genetic Predisposition to Disease](#) [Genomic Instability](#)
[Head and Neck Neoplasms](#) [Kidney Failure, Chronic](#) [Laryngeal Neoplasms](#) [Lung Neoplasms](#)
[Mesothelioma](#) [Mouth Neoplasms](#)

... see more