



# SZABO SCANDIC

Part of Europa Biosite

## Produktinformation



Forschungsprodukte & Biochemikalien



Zellkultur & Verbrauchsmaterial



Diagnostik & molekulare Diagnostik



Laborgeräte & Service

Weitere Information auf den folgenden Seiten!  
See the following pages for more information!



### Lieferung & Zahlungsart

siehe unsere [Liefer- und Versandbedingungen](#)

### Zuschläge

- Mindermengenzuschlag
- Trockeneiszuschlag
- Gefahrgutzuschlag
- Expressversand

### SZABO-SCANDIC HandelsgmbH

Quellenstraße 110, A-1100 Wien

T. +43(0)1 489 3961-0

F. +43(0)1 489 3961-7

[mail@szabo-scandic.com](mailto:mail@szabo-scandic.com)

[www.szabo-scandic.com](http://www.szabo-scandic.com)

[linkedin.com/company/szaboscandic](https://www.linkedin.com/company/szaboscandic) 

## GSTA4 polyclonal antibody (A01)

Catalog # : H00002941-A01

規格 : [ 50 uL ]

List All

### Specification

**Product Description:** Mouse polyclonal antibody raised against a partial recombinant GSTA4.

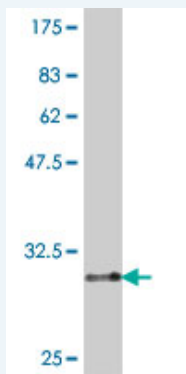
**Immunogen:** GSTA4 (NP\_001503, 168 a.a. ~ 222 a.a) partial recombinant protein with GST tag.

**Sequence:** EEKIPNILSAFPFLQEYTVKLSNIPTIKRFLEPGSKKKPPPDEIYVRTVYNIFRP

**Host:** Mouse

**Reactivity:** Human

**Quality Control Testing:** Antibody Reactive Against Recombinant Protein.



Western Blot detection against Immunogen (32.16 KDa) .

**Storage Buffer:** 50 % glycerol

**Storage Instruction:** Store at -20°C or lower. Aliquot to avoid repeated freezing and thawing.

**MSDS:** [Download](#)

**Datasheet:** [Download](#)

### Publication Reference

1. Effects of cypermethrin on monoamine transporters, xenobiotic metabolizing enzymes and lipid peroxidation in the rat nigrostriatal system.  
Tiwari MN, Singh AK, Ahmad I, Upadhyay G, Singh D, Patel DK, Singh C, Prakash O, Singh MP. Free Radic Res. 2010 Sep 6. [Epub ahead of print]
2. Carbonylation of adipose proteins in obesity and insulin resistance: Identification of adipocyte fatty acid-binding protein as a cellular target of 4-hydroxynonenal.  
Grimsrud PA, Picklo MJ Sr, Griffin TJ, Bernlohr DA. Mol Cell Proteomics. 2007 Apr;6(4):624-37. Epub 2007 Jan 6.

### Applications

Western Blot (Recombinant protein)

### Application Image

Western Blot (Recombinant protein)

ELISA

ELISA

## Gene Information

Entrez GeneID: [2941](#)

GeneBank Accession#: [NM\\_001512](#)

Protein Accession#: [NP\\_001503](#)

Gene Name: GSTA4

Gene Alias: DKFZp686D21185,GSTA4-4,GTA4

Gene Description: glutathione S-transferase alpha 4

Omim ID: [605450](#)

Gene Ontology: [Hyperlink](#)

**Gene Summary:** Cytosolic and membrane-bound forms of glutathione S-transferase are encoded by two distinct supergene families. These enzymes are involved in cellular defense against toxic, carcinogenic, and pharmacologically active electrophilic compounds. At present, eight distinct classes of the soluble cytoplasmic mammalian glutathione S-transferases have been identified: alpha, kappa, mu, omega, pi, sigma, theta and zeta. This gene encodes a glutathione S-transferase belonging to the alpha class. The alpha class genes, which are located in a cluster on chromosome 6, are highly related and encode enzymes with glutathione peroxidase activity that function in the detoxification of lipid peroxidation products. Reactive electrophiles produced by oxidative metabolism have been linked to a number of degenerative diseases including Parkinson's disease, Alzheimer's disease, cataract formation, and atherosclerosis. [provided by RefSeq]

**Other Designations:** GST class-alpha,OTTHUMP00000016624,OTTHUMP00000016625,S-(hydroxyalkyl)glutathione lyase A4,glutathione S-alkyltransferase A4,glutathione S-aralkyltransferase A4,glutathione S-aryltransferase A4,glutathione S-transferase A4,glutathione transferase A4-4

## Gene Pathway

[Drug metabolism - cytochrome P450](#) [Glutathione metabolism](#)  
[Metabolism of xenobiotics by cytochrome P450](#)

## Related Disease

[Adenocarcinoma](#) [Alzheimer Disease](#) [Alzheimer disease](#) [Carcinoma, Basal Cell](#)  
[Carcinoma, Non-Small-Cell Lung](#) [Carcinoma, Squamous Cell](#) [Celiac Disease](#) [Cleft Lip](#)  
[Cleft Palate](#) [Cognition](#) [Colorectal Neoplasms](#) [Coronary Artery Disease](#)  
[Diabetes Complications](#) [Genetic Predisposition to Disease](#) [Genomic Instability](#)  
[Kidney Failure, Chronic](#) [Lung carcinoma, small cell](#) [Lung Neoplasms](#) [Mesothelioma](#)

... see more