



SZABO SCANDIC

Part of Europa Biosite

Produktinformation



Forschungsprodukte & Biochemikalien



Zellkultur & Verbrauchsmaterial



Diagnostik & molekulare Diagnostik



Laborgeräte & Service

Weitere Information auf den folgenden Seiten!
See the following pages for more information!



Lieferung & Zahlungsart

siehe unsere [Liefer- und Versandbedingungen](#)

Zuschläge

- Mindermengenzuschlag
- Trockeneiszuschlag
- Gefahrgutzuschlag
- Expressversand

SZABO-SCANDIC HandelsgmbH

Quellenstraße 110, A-1100 Wien

T. +43(0)1 489 3961-0

F. +43(0)1 489 3961-7

mail@szabo-scandic.com

www.szabo-scandic.com

[linkedin.com/company/szaboscandic](https://www.linkedin.com/company/szaboscandic) 



GSTM3 purified MaxPab mouse polyclonal antibody (B02P) MaxPab®

Catalog # : H00002947-B02P

規格 : [50 ug]

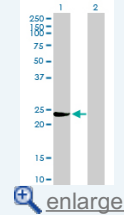
[List All](#)

Specification

Product Description:	Mouse polyclonal antibody raised against a full-length human GSTM3 protein.
Immunogen:	GSTM3 (NP_000840.2, 1 a.a. ~ 225 a.a) full-length human protein.
Sequence:	MSCCESSMVLGYWDIRGLAHAIRLLLLLEFTDTSYEEKRYTCGEAPDYDRSQ WLDVKFKLDFPNLPYLLDGNKITQSNAILRYARKHNMCGETEEEEKIR VDIENQVMDFRFTQLIRLCYSSDHEKLPQYLEELPGQLKQFSMFLGKFS WFAGEKLTFFVDFLTYDILDQNRIFDPKCLDEFPNLKAFMCRFEALEKIAAY LQSDQFCKMPINNKMAQWGNKPVC
Host:	Mouse
Reactivity:	Human
Quality Control Testing:	Antibody reactive against mammalian transfected lysate.
Storage Buffer:	In 1x PBS, pH 7.4
Storage Instruction:	Store at -20°C or lower. Aliquot to avoid repeated freezing and thawing.
MSDS:	 Download
Datasheet:	 Download

Application Image

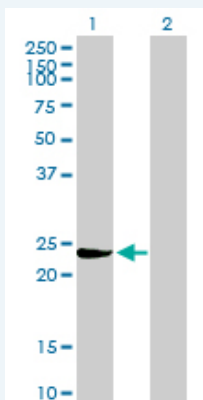
Western Blot (Transfected lysate)



 [enlarge](#)

Applications


Western Blot (Transfected lysate)



Western Blot analysis of GSTM3 expression in transfected 293T cell line (H00002947-T02) by GSTM3 MaxPab polyclonal antibody.

Lane 1: GSTM3 transfected lysate(24.75 KDa).

Lane 2: Non-transfected lysate.

 [Protocol Download](#)

Gene Information

Entrez GeneID: [2947](#)

GeneBank [NM_000849.3](#)
Accession#:

Protein [NP_000840.2](#)
Accession#:

Gene Name: GSTM3

Gene Alias: GST5,GSTB,GSTM3-3,GTM3,MGC3310,MGC3704

Gene Description: glutathione S-transferase mu 3 (brain)

Omim ID: [138390](#)

Gene Ontology: [Hyperlink](#)

Gene Summary: Cytosolic and membrane-bound forms of glutathione S-transferase are encoded by two distinct supergene families. At present, eight distinct classes of the soluble cytoplasmic mammalian glutathione S-transferases have been identified: alpha, kappa, mu, omega, pi, sigma, theta and zeta. This gene encodes a glutathione S-transferase that belongs to the mu class. The mu class of enzymes functions in the detoxification of electrophilic compounds, including carcinogens, therapeutic drugs, environmental toxins and products of oxidative stress, by conjugation with glutathione. The genes encoding the mu class of enzymes are organized in a gene cluster on chromosome 1p13.3 and are known to be highly polymorphic. These genetic variations can change an individual's susceptibility to carcinogens and toxins as well as affect the toxicity and efficacy of certain drugs. Mutations of this class mu gene have been linked with a slight increase in a number of cancers, likely due to exposure with environmental toxins. Alternative splicing results in multiple transcript variants.
[provided by RefSeq]

Other Designations: GST class-mu 3,OTTHUMP00000013355,S-(hydroxyalkyl)glutathione lyase M3,brain GST,brain type mu-glutathione S-transferase,glutathione S-alkyltransferase M3,glutathione S-aralkyltransferase M3,glutathione S-aryltransferase M3,glutathione S-transferase M3 (b)

Gene Pathway

[Drug metabolism - cytochrome P450](#) [Glutathione metabolism](#)
[Metabolism of xenobiotics by cytochrome P450](#)

Related Disease

[Adenocarcinoma](#) [Adenoma](#) [Alzheimer Disease](#) [Alzheimer disease](#) [Asthma](#) [Asthma](#)
[Brain Neoplasms](#) [Breast cancer](#) [Breast Neoplasms](#) [Carcinoma](#) [Basal Cell](#)
[Carcinoma](#) [Hepatocellular Carcinoma](#) [Non-Small-Cell Lung Carcinoma](#) [Squamous Cell](#)
[Carcinoma](#) [Transitional Cell](#) [Cardiovascular Diseases](#) [Chronic Disease](#) [Cleft Lip](#)
[Cleft Palate](#) [Cognition](#)

... see more