



# SZABO SCANDIC

Part of Europa Biosite

## Produktinformation



Forschungsprodukte & Biochemikalien



Zellkultur & Verbrauchsmaterial



Diagnostik & molekulare Diagnostik



Laborgeräte & Service

Weitere Information auf den folgenden Seiten!  
See the following pages for more information!



### Lieferung & Zahlungsart

siehe unsere [Liefer- und Versandbedingungen](#)

### Zuschläge

- Mindermengenzuschlag
- Trockeneiszuschlag
- Gefahrgutzuschlag
- Expressversand

### SZABO-SCANDIC HandelsgmbH

Quellenstraße 110, A-1100 Wien

T. +43(0)1 489 3961-0

F. +43(0)1 489 3961-7

[mail@szabo-scandic.com](mailto:mail@szabo-scandic.com)

[www.szabo-scandic.com](http://www.szabo-scandic.com)

[linkedin.com/company/szaboscandic](https://www.linkedin.com/company/szaboscandic) 

## GSTM4 polyclonal antibody (A01)

Catalog # : H00002948-A01

規格 : [ 50 uL ]

List All

### Specification

**Product Description:** Mouse polyclonal antibody raised against a partial recombinant GSTM4.

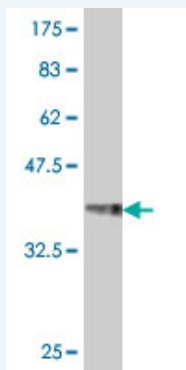
**Immunogen:** GSTM4 (NP\_000841, 109 a.a. ~ 218 a.a) partial recombinant protein with GST tag.

**Sequence:** NQLARVCYSPDFEKLKPEYLEELPTMMQHFSQLGKRPWFVVGDKITFV  
DFLAYDVLDLHRIFEPNCLDAFPNLKDFISRFEGLEKISAYMKSSRFLPKP  
LYTRVAVWGNK

**Host:** Mouse

**Reactivity:** Human

**Quality Control Testing:** Antibody Reactive Against Recombinant Protein.



Western Blot detection against Immunogen (38.21 kDa) .

**Storage Buffer:** 50 % glycerol

**Storage Instruction:** Store at -20°C or lower. Aliquot to avoid repeated freezing and thawing.

**MSDS:** [Download](#)

**Datasheet:** [Download](#)

### Applications

Western Blot (Recombinant protein)

[Protocol Download](#)

ELISA

### Gene Information

**Entrez GeneID:** [2948](#)

**GeneBank Accession#:** [NM\\_000850](#)

### Application Image

Western Blot (Recombinant protein)

ELISA

**Protein Accession#:** [NP\\_000841](#)

**Gene Name:** GSTM4

**Gene Alias:** GSTM4-4,GTM4,MGC131945,MGC9247

**Gene Description:** glutathione S-transferase mu 4

**Omim ID:** [138333](#)

**Gene Ontology:** [Hyperlink](#)

**Gene Summary:** Cytosolic and membrane-bound forms of glutathione S-transferase are encoded by two distinct supergene families. At present, eight distinct classes of the soluble cytoplasmic mammalian glutathione S-transferases have been identified: alpha, kappa, mu, omega, pi, sigma, theta and zeta. This gene encodes a glutathione S-transferase that belongs to the mu class. The mu class of enzymes functions in the detoxification of electrophilic compounds, including carcinogens, therapeutic drugs, environmental toxins and products of oxidative stress, by conjugation with glutathione. The genes encoding the mu class of enzymes are organized in a gene cluster on chromosome 1p13.3 and are known to be highly polymorphic. These genetic variations can change an individual's susceptibility to carcinogens and toxins as well as affect the toxicity and efficacy of certain drugs. Diversification of these genes has occurred in regions encoding substrate-binding domains, as well as in tissue expression patterns, to accommodate an increasing number of foreign compounds. Multiple transcript variants, each encoding a distinct protein isoform, have been identified. [provided by RefSeq]

**Other Designations:** GST class-mu 4,GTS-Mu2,OTTHUMP00000013356,OTTHUMP00000013358,S-(hydroxyalkyl)glutathione lyase M4,glutathione S-alkyltransferase M4,glutathione S-aralkyltransferase M4,glutathione S-aryltransferase M4,glutathione S-transferase M4

### Gene Pathway

[Drug metabolism - cytochrome P450](#) [Glutathione metabolism](#)  
[Metabolism of xenobiotics by cytochrome P450](#)

### Related Disease

[Alzheimer Disease](#) [Alzheimer disease](#) [Arthritis, Rheumatoid](#) [Breast Neoplasms](#)  
[Carcinoma, Squamous Cell](#) [Cardiovascular Diseases](#) [Cognition](#) [Coronary Artery Disease](#)  
[Coronary Disease](#) [Diabetes Mellitus, Type 2](#) [Edema](#) [Genetic Predisposition to Disease](#)  
[Head and Neck Neoplasms](#) [Hearing Loss](#) [Hypertension](#) [Kidney Failure, Chronic](#)  
[Lung Neoplasms](#) [Neoplasms, Second Primary](#) [Prenatal Exposure Delayed Effects](#)

... see more