



# SZABO SCANDIC

Part of Europa Biosite

## Produktinformation



Forschungsprodukte & Biochemikalien



Zellkultur & Verbrauchsmaterial



Diagnostik & molekulare Diagnostik



Laborgeräte & Service

Weitere Information auf den folgenden Seiten!  
See the following pages for more information!



### Lieferung & Zahlungsart

siehe unsere [Liefer- und Versandbedingungen](#)

### Zuschläge

- Mindermengenzuschlag
- Trockeneiszuschlag
- Gefahrgutzuschlag
- Expressversand

### SZABO-SCANDIC HandelsgmbH

Quellenstraße 110, A-1100 Wien

T. +43(0)1 489 3961-0

F. +43(0)1 489 3961-7

[mail@szabo-scandic.com](mailto:mail@szabo-scandic.com)

[www.szabo-scandic.com](http://www.szabo-scandic.com)

[linkedin.com/company/szaboscandic](https://www.linkedin.com/company/szaboscandic) 



## GSTM4 purified MaxPab mouse polyclonal antibody (B01P) MaxPab®

Catalog # : H00002948-B01P

規格 : [ 50 ug ]

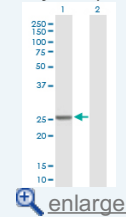
[List All](#)


### Specification

<b>Product Description:</b>	Mouse polyclonal antibody raised against a full-length human GSTM4 protein.
<b>Immunogen:</b>	GSTM4 (NP_000841.1, 1 a.a. ~ 218 a.a) full-length human protein.
<b>Sequence:</b>	MSMTLGYWDIRGLAHAIRLLLEYPDSSYEEKKYTMGDAPDYDRSQWLNE KFKLGLDFPNLPYLIDGAHKITQSNAILCYARKHNLCGETEEEEKIRVDILEN QAMDVSNQLARVCYSPDFEKLKPEYLEELPTMMQHFSQFLGKRPWFVG DKITFVDFLAYDVLDLHRIFEPNCLDAFPNLKDFISRFEGLEKISAYMKSSR FLPKPLYTRVAWVGNK
<b>Host:</b>	Mouse
<b>Reactivity:</b>	Human
<b>Quality Control Testing:</b>	Antibody reactive against mammalian transfected lysate.
<b>Storage Buffer:</b>	In 1x PBS, pH 7.4
<b>Storage Instruction:</b>	Store at -20°C or lower. Aliquot to avoid repeated freezing and thawing.
<b>MSDS:</b>	 <a href="#">Download</a>
<b>Datasheet:</b>	 <a href="#">Download</a>

### Application Image

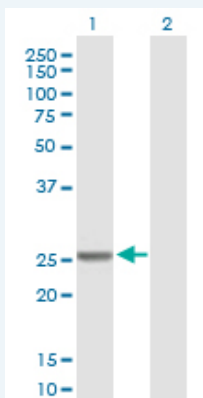
Western Blot (Transfected lysate)



 [enlarge](#)

### Applications


#### Western Blot (Transfected lysate)



Western Blot analysis of GSTM4 expression in transfected 293T cell line (H00002948-T01) by GSTM4 MaxPab polyclonal antibody.

Lane 1: GSTM4 transfected lysate(23.98 KDa).

Lane 2: Non-transfected lysate.

 [Protocol Download](#)

### Gene Information

Entrez GeneID: [2948](#)

GeneBank [NM\\_000850.3](#)

Accession#:

Protein [NP\\_000841.1](#)

Accession#:

Gene Name: GSTM4

Gene Alias: GSTM4-4,GTM4,MGC131945,MGC9247

Gene glutathione S-transferase mu 4

Description:

Omim ID: [138333](#)

Gene Ontology: [Hyperlink](#)

**Gene Summary:** Cytosolic and membrane-bound forms of glutathione S-transferase are encoded by two distinct supergene families. At present, eight distinct classes of the soluble cytoplasmic mammalian glutathione S-transferases have been identified: alpha, kappa, mu, omega, pi, sigma, theta and zeta. This gene encodes a glutathione S-transferase that belongs to the mu class. The mu class of enzymes functions in the detoxification of electrophilic compounds, including carcinogens, therapeutic drugs, environmental toxins and products of oxidative stress, by conjugation with glutathione. The genes encoding the mu class of enzymes are organized in a gene cluster on chromosome 1p13.3 and are known to be highly polymorphic. These genetic variations can change an individual's susceptibility to carcinogens and toxins as well as affect the toxicity and efficacy of certain drugs. Diversification of these genes has occurred in regions encoding substrate-binding domains, as well as in tissue expression patterns, to accommodate an increasing number of foreign compounds. Multiple transcript variants, each encoding a distinct protein isoform, have been identified. [provided by RefSeq]

Other GST class-mu 4,GTS-

Designations: Mu2,OTTHUMP00000013356,OTTHUMP00000013358,S-(hydroxyalkyl)glutathione lyase M4,glutathione S-alkyltransferase M4,glutathione S-aralkyltransferase M4,glutathione S-aryltransferase M4,glutathione S-transferase M4

### Gene Pathway

[Drug metabolism - cytochrome P450](#) [Glutathione metabolism](#)  
[Metabolism of xenobiotics by cytochrome P450](#)

### Related Disease

[Alzheimer Disease](#) [Alzheimer disease](#) [Arthritis, Rheumatoid](#) [Breast Neoplasms](#)  
[Carcinoma, Squamous Cell](#) [Cardiovascular Diseases](#) [Cognition](#) [Coronary Artery Disease](#)  
[Coronary Disease](#) [Diabetes Mellitus, Type 2](#) [Edema](#) [Genetic Predisposition to Disease](#)  
[Head and Neck Neoplasms](#) [Hearing Loss](#) [Hypertension](#) [Kidney Failure, Chronic](#)  
[Lung Neoplasms](#) [Neoplasms, Second Primary](#) [Prenatal Exposure Delayed Effects](#)

... see more