



SZABO SCANDIC

Part of Europa Biosite

Produktinformation



Forschungsprodukte & Biochemikalien



Zellkultur & Verbrauchsmaterial



Diagnostik & molekulare Diagnostik



Laborgeräte & Service

Weitere Information auf den folgenden Seiten!
See the following pages for more information!



Lieferung & Zahlungsart

siehe unsere [Liefer- und Versandbedingungen](#)

Zuschläge

- Mindermengenzuschlag
- Trockeneiszuschlag
- Gefahrgutzuschlag
- Expressversand

SZABO-SCANDIC HandelsgmbH

Quellenstraße 110, A-1100 Wien

T. +43(0)1 489 3961-0

F. +43(0)1 489 3961-7

mail@szabo-scandic.com

www.szabo-scandic.com

[linkedin.com/company/szaboscandic](https://www.linkedin.com/company/szaboscandic)



GSTM4 purified MaxPab rabbit polyclonal antibody (D01P) MaxPab®

Catalog # : H00002948-D01P

規格 : [100 ug]

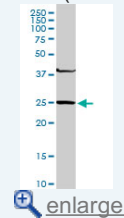
List All

Specification

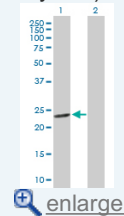
Product Description:	Rabbit polyclonal antibody raised against a full-length human GSTM4 protein.
Immunogen:	GSTM4 (NP_000841.1, 1 a.a. ~ 218 a.a) full-length human protein.
Sequence:	MSMTLG YWDIRGLAHAIRLLLE YTDSSYEKKYTMGDAPDYDRSQWLNE KFKLGLDFPNLPYLIDGAHKITQSNAILCYARKHNLCGETEEEEKIRVDILEN QAMDVSNQLARVCYSPDFEKLKPEYLEELPTMMQHFSQFLGKRPWFVG DKITFVDFLAYDVLDLHRIFEPNCLDAFPNLKDFISRFEGLEKISAYMKSSR FLPKPLYTRVAWVWGNK
Host:	Rabbit
Reactivity:	Human
Quality Control Testing:	Antibody reactive against mammalian transfected lysate.
Storage Buffer:	In 1x PBS, pH 7.4
Storage Instruction:	Store at -20°C or lower. Aliquot to avoid repeated freezing and thawing.
MSDS:	 Download
Datasheet:	 Download

Application Image

Western Blot (Tissue lysate)

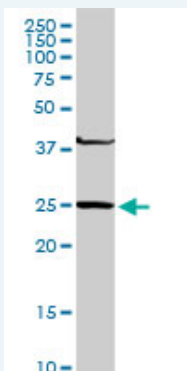


Western Blot (Transfected lysate)



Applications

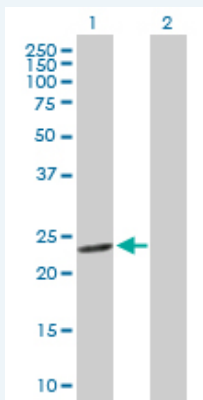
Western Blot (Tissue lysate)



GSTM4 MaxPab rabbit polyclonal antibody. Western Blot analysis of GSTM4 expression in human liver.

 [Protocol Download](#)

Western Blot (Transfected lysate)



Western Blot analysis of GSTM4 expression in transfected 293T cell line ([H00002948-T01](#)) by GSTM4 MaxPab polyclonal antibody.

Lane 1: GSTM4 transfected lysate(25.60 KDa).
Lane 2: Non-transfected lysate.

 [Protocol Download](#)

Gene Information

Entrez GeneID: [2948](#)

GeneBank [NM_000850.3](#)

Accession#:

Protein [NP_000841.1](#)

Accession#:

Gene Name: GSTM4

Gene Alias: GSTM4-4,GTM4,MGC131945,MGC9247

Gene glutathione S-transferase mu 4

Description:

Omim ID: [138333](#)

Gene Ontology: [Hyperlink](#)

Gene Summary: Cytosolic and membrane-bound forms of glutathione S-transferase are encoded by two distinct supergene families. At present, eight distinct classes of the soluble cytoplasmic mammalian glutathione S-transferases have been identified: alpha, kappa, mu, omega, pi, sigma, theta and zeta. This gene encodes a glutathione S-transferase that belongs to the mu class. The mu class of enzymes functions in the detoxification of electrophilic compounds, including carcinogens, therapeutic drugs, environmental toxins and products of oxidative stress, by conjugation with glutathione. The genes encoding the mu class of enzymes are organized in a gene cluster on chromosome 1p13.3 and are known to be highly polymorphic. These genetic variations can change an individual's susceptibility to carcinogens and toxins as well as affect the toxicity and efficacy of certain drugs. Diversification of these genes has occurred in regions encoding substrate-binding domains, as well as in tissue expression patterns, to accommodate an increasing number of foreign compounds. Multiple transcript variants, each encoding a distinct protein isoform, have been identified. [provided by RefSeq]

Other GST class-mu 4,GTS-

Designations: Mu2,OTTHUMP00000013356,OTTHUMP00000013358,S-(hydroxyalkyl)glutathione lyase M4,glutathione S-alkyltransferase M4,glutathione S-aralkyltransferase M4,glutathione S-aryltransferase M4,glutathione S-transferase M4

Gene Pathway

[Drug metabolism - cytochrome P450](#) [Glutathione metabolism](#)
[Metabolism of xenobiotics by cytochrome P450](#)

Related Disease

[Alzheimer Disease](#) [Alzheimer disease](#) [Arthritis, Rheumatoid](#) [Breast Neoplasms](#)
[Carcinoma, Squamous Cell](#) [Cardiovascular Diseases](#) [Cognition](#) [Coronary Artery Disease](#)
[Coronary Disease](#) [Diabetes Mellitus, Type 2](#) [Edema](#) [Genetic Predisposition to Disease](#)
[Head and Neck Neoplasms](#) [Hearing Loss](#) [Hypertension](#) [Kidney Failure, Chronic](#)
[Lung Neoplasms](#) [Neoplasms, Second Primary](#) [Prenatal Exposure Delayed Effects](#)

... see more

[服務條款](#) | [隱私權政策](#) | [著作及商標](#) | [網站地圖](#)

©2016 亞諾法生技股份有限公司 Abnova Corporation. 版權所有.