



SZABO SCANDIC

Part of Europa Biosite

Produktinformation



Forschungsprodukte & Biochemikalien



Zellkultur & Verbrauchsmaterial



Diagnostik & molekulare Diagnostik



Laborgeräte & Service

Weitere Information auf den folgenden Seiten!
See the following pages for more information!



Lieferung & Zahlungsart

siehe unsere [Liefer- und Versandbedingungen](#)

Zuschläge

- Mindermengenzuschlag
- Trockeneiszuschlag
- Gefahrgutzuschlag
- Expressversand

SZABO-SCANDIC HandelsgmbH

Quellenstraße 110, A-1100 Wien

T. +43(0)1 489 3961-0

F. +43(0)1 489 3961-7

mail@szabo-scandic.com

www.szabo-scandic.com

[linkedin.com/company/szaboscandic](https://www.linkedin.com/company/szaboscandic) 

GSTM5 monoclonal antibody (M02), clone 1G4

Catalog # : H00002949-M02

規格 : [100 ug]

[List All](#)

Specification

Product Description:	Mouse monoclonal antibody raised against a partial recombinant GSTM5.
Immunogen:	GSTM5 (NP_000842, 145 a.a. ~ 218 a.a) partial recombinant protein with GST tag. MW of the GST tag alone is 26 KDa.
Sequence:	RPWFAGDKITFVDFLAYDVLDMKRIFEPKCLDAFLNLKDFISRFEGLKKIS AYMKSSQFLRGLLFGKSATWNSK
Host:	Mouse
Reactivity:	Human
Isotype:	IgG1 Kappa
Quality Control Testing:	Antibody Reactive Against Recombinant Protein.
Storage Buffer:	In 1x PBS, pH 7.4

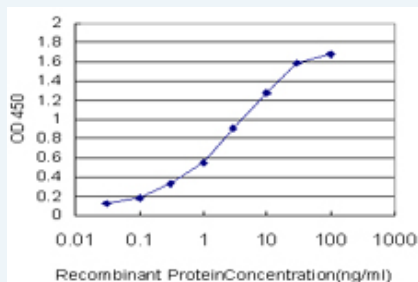
Storage Instruction: Store at -20°C or lower. Aliquot to avoid repeated freezing and thawing.

MSDS:  [Download](#)

Datasheet:  [Download](#)

Applications

Sandwich ELISA (Recombinant protein)



Detection limit for recombinant GST tagged GSTM5 is approximately 0.03ng/ml as a capture antibody.

 [Protocol Download](#)

ELISA

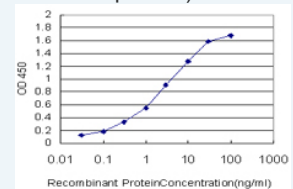
Gene Information


Entrez GeneID: [2949](#)

GeneBank Accession#: [NM_000851](#)

Application Image

Sandwich ELISA (Recombinant protein)



 [enlarge](#)

ELISA

Protein Accession#: [NP_000842](#)

Gene Name: GSTM5

Gene Alias: GSTM5-5,GTM5

Gene Description: glutathione S-transferase mu 5

Omim ID: [138385](#)

Gene Ontology: [Hyperlink](#)

Gene Summary: Cytosolic and membrane-bound forms of glutathione S-transferase are encoded by two distinct supergene families. At present, eight distinct classes of the soluble cytoplasmic mammalian glutathione S-transferases have been identified: alpha, kappa, mu, omega, pi, sigma, theta and zeta. This gene encodes a glutathione S-transferase that belongs to the mu class. The mu class of enzymes functions in the detoxification of electrophilic compounds, including carcinogens, therapeutic drugs, environmental toxins and products of oxidative stress, by conjugation with glutathione. The genes encoding the mu class of enzymes are organized in a gene cluster on chromosome 1p13.3 and are known to be highly polymorphic. These genetic variations can change an individual's susceptibility to carcinogens and toxins as well as affect the toxicity and efficacy of certain drugs. Diversification of these genes has occurred in regions encoding substrate-binding domains, as well as in tissue expression patterns, to accommodate an increasing number of foreign compounds. [provided by RefSeq]

Other Designations: GST class-mu 5,OTTHUMP00000013359,S-(hydroxyalkyl)glutathione lyase M5,glutathione S-alkyltransferase M5,glutathione S-aralkyltransferase M5,glutathione S-aryltransferase M5,glutathione S-transferase M5

Gene Pathway

[Drug metabolism - cytochrome P450](#) [Glutathione metabolism](#)
[Metabolism of xenobiotics by cytochrome P450](#)

Related Disease

[Alzheimer Disease](#) [Alzheimer disease](#) [Breast Neoplasms](#) [Cognition](#)
[Coronary Artery Disease](#) [Coronary Disease](#) [Genetic Predisposition to Disease](#)
[Head and Neck Neoplasms](#) [Hypertension](#) [Lung Neoplasms](#) [Neoplasm Recurrence, Local](#)
[Neoplasms, Second Primary](#) [Prenatal Exposure Delayed Effects](#)

[服務條款](#) | [隱私權政策](#) | [著作及商標](#) | [網站地圖](#)

©2016 亞諾法生技股份有限公司 Abnova Corporation. 版權所有.