



SZABO SCANDIC

Part of Europa Biosite

Produktinformation



Forschungsprodukte & Biochemikalien



Zellkultur & Verbrauchsmaterial



Diagnostik & molekulare Diagnostik



Laborgeräte & Service

Weitere Information auf den folgenden Seiten!
See the following pages for more information!



Lieferung & Zahlungsart

siehe unsere [Liefer- und Versandbedingungen](#)

Zuschläge

- Mindermengenzuschlag
- Trockeneiszuschlag
- Gefahrgutzuschlag
- Expressversand

SZABO-SCANDIC HandelsgmbH

Quellenstraße 110, A-1100 Wien

T. +43(0)1 489 3961-0

F. +43(0)1 489 3961-7

mail@szabo-scandic.com

www.szabo-scandic.com

[linkedin.com/company/szaboscandic](https://www.linkedin.com/company/szaboscandic) 

GSTT1 monoclonal antibody (M02), clone 2D12-1C9

Catalog # : H00002952-M02

規格 : [100 ug]

[List All](#)

Specification

Product Description: Mouse monoclonal antibody raised against a full-length recombinant GSTT1.

Immunogen: GSTT1 (AAH07065, 1 a.a. ~ 240 a.a) full-length recombinant protein with GST tag. MW of the GST tag alone is 26 KDa.

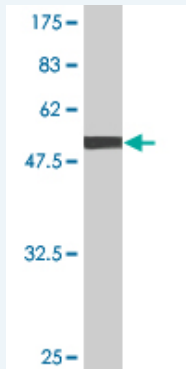
Sequence: MGLELYLDLLSQPCRAVYIFAKKNDIPFELRVDLIKQHLSDACAQVNPL
KKVPALKDGDFTLTESVAILLYLTRKYKVPDYWYPQDLQARARVDEYLA
WQHHTLRRSCLRALWHKVMFPVFLGEPVSPQTLAATLAELDVTLQLE
DKFLQNKAFLTGPHISLADLVAITELMHPVGAGCQVFEGRPKLATWRQR
VEAAVGEDLFQEAHEVILKAKDFPPADPTIKQKLMPWVLMIR

Host: Mouse

Reactivity: Human

Isotype: IgG1 Kappa

Quality Control Testing: Antibody Reactive Against Recombinant Protein.



Western Blot detection against Immunogen (52.14 KDa) .

Storage Buffer: In 1x PBS, pH 7.4

Storage Instruction: Store at -20°C or lower. Aliquot to avoid repeated freezing and thawing.

MSDS: [Download](#)

Datasheet: [Download](#)

Applications

Western Blot (Recombinant protein)

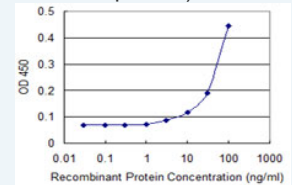
[Protocol Download](#)

Sandwich ELISA (Recombinant protein)

Application Image

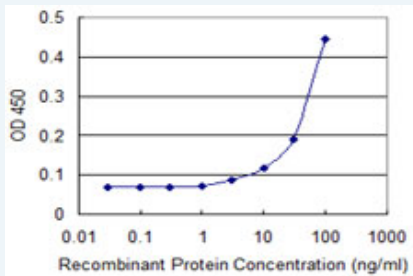
Western Blot (Recombinant protein)

Sandwich ELISA (Recombinant protein)



[enlarge](#)

ELISA



Detection limit for recombinant GST tagged GSTT1 is 3 ng/ml as a capture antibody.

 [Protocol Download](#)

ELISA

Gene Information

Entrez GeneID: [2952](#)

GeneBank [BC007065](#)

Accession#:

Protein [AAH07065](#)

Accession#:

Gene Name: GSTT1

Gene Alias: -

Gene glutathione S-transferase theta 1

Description:

Omim ID: [600436](#)

Gene Ontology: [Hyperlink](#)

Gene Summary: Glutathione S-transferase (GST) theta 1 (GSTT1) is a member of a superfamily of proteins that catalyze the conjugation of reduced glutathione to a variety of electrophilic and hydrophobic compounds. Human GSTs can be divided into five main classes: alpha, mu, pi, theta, and zeta. The theta class includes GSTT1 and GSTT2. The GSTT1 and GSTT2 share 55% amino acid sequence identity and both of them were claimed to have an important role in human carcinogenesis. The GSTT1 gene is located approximately 50kb away from the GSTT2 gene. The GSTT1 and GSTT2 genes have a similar structure, being composed of five exons with identical exon/intron boundaries. [provided by RefSeq]

Other -

Designations:

Gene Pathway

[Drug metabolism - cytochrome P450](#) [Glutathione metabolism](#)

[Metabolism of xenobiotics by cytochrome P450](#)

Related Disease

[Abnormalities, Drug-Induced Abortion, Habitual Absenteeism Acute Disease](#)
[Acute Lung Injury Adenocarcinoma Adenocarcinoma, Bronchiolo-Alveolar](#)
[Adenocarcinoma, Clear Cell Adenocarcinoma, Follicular Adenoma Adenoma, Liver Cell](#)
[Adenoma, Oxyphilic Adenomatous Polyposis Coli Airway Remodeling Alcoholism](#)
[Alcohol-Related Disorders alpha 1-Antitrypsin Deficiency Alpha-1-antitrypsin deficiency](#)
[Altitude Sickness](#)

... see more

