



# SZABO SCANDIC

Part of Europa Biosite

## Produktinformation



Forschungsprodukte & Biochemikalien



Zellkultur & Verbrauchsmaterial



Diagnostik & molekulare Diagnostik



Laborgeräte & Service

Weitere Information auf den folgenden Seiten!  
See the following pages for more information!



### Lieferung & Zahlungsart

siehe unsere [Liefer- und Versandbedingungen](#)

### Zuschläge

- Mindermengenzuschlag
- Trockeneiszuschlag
- Gefahrgutzuschlag
- Expressversand

### SZABO-SCANDIC HandelsgmbH

Quellenstraße 110, A-1100 Wien

T. +43(0)1 489 3961-0

F. +43(0)1 489 3961-7

[mail@szabo-scandic.com](mailto:mail@szabo-scandic.com)

[www.szabo-scandic.com](http://www.szabo-scandic.com)

[linkedin.com/company/szaboscandic](https://www.linkedin.com/company/szaboscandic) 

## MSH6 monoclonal antibody (M01), clone 1F2

Catalog # : H00002956-M01

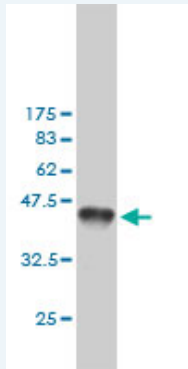
規格 : [ 100 ug ]

[List All](#)

### Specification

<b>Product Description:</b>	Mouse monoclonal antibody raised against a partial recombinant MSH6.
<b>Immunogen:</b>	MSH6 (NP_000170, 931 a.a. ~ 1030 a.a) partial recombinant protein with GST tag. MW of the GST tag alone is 26 KDa.
<b>Sequence:</b>	AGFDSYDQALADIRENEQSLLEYLEKQRNRIGCRTIVYWGIGRNRVQLE IPENFTTRNLPEEYELKSTKKGCKRYWTKTIEKLANLINAEERRDVSLK
<b>Host:</b>	Mouse
<b>Reactivity:</b>	Human
<b>Isotype:</b>	IgG1 kappa

**Quality Control Testing:** Antibody Reactive Against Recombinant Protein.



Western Blot detection against Immunogen (36.74 KDa) .

**Storage Buffer:** In 1x PBS, pH 7.4

**Storage Instruction:** Store at -20°C or lower. Aliquot to avoid repeated freezing and thawing.

**MSDS:** [Download](#)

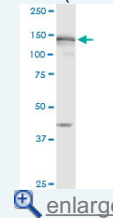
**Datasheet:** [Download](#)

### Applications

**Western Blot (Tissue lysate)**

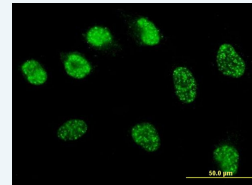
### Application Image

Western Blot (Tissue lysate)

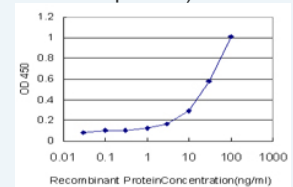


Western Blot (Recombinant protein)

Immunofluorescence

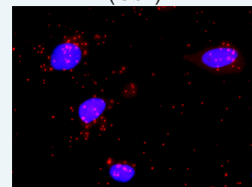


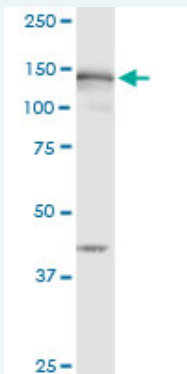
Sandwich ELISA (Recombinant protein)



ELISA

*In situ* Proximity Ligation Assay (Cell)





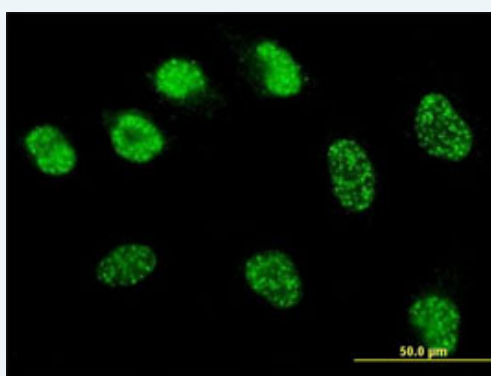
MSH6 monoclonal antibody (M01), clone 1F2. Western Blot analysis of MSH6 expression in human kidney.

[Protocol Download](#)

### Western Blot (Recombinant protein)

[Protocol Download](#)

### Immunofluorescence

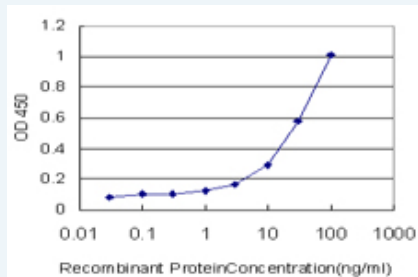


[enlarge this image](#)

Immunofluorescence of monoclonal antibody to MSH6 on HeLa cell . [antibody concentration 10 ug/ml]

[Protocol Download](#)

### Sandwich ELISA (Recombinant protein)

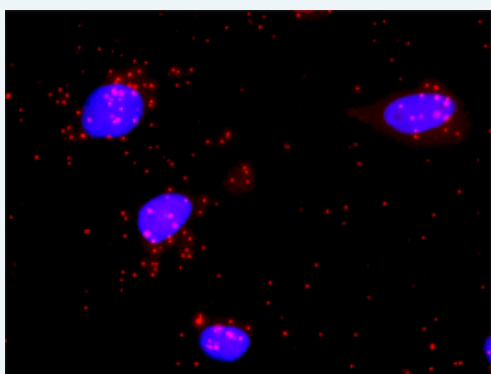


Detection limit for recombinant GST tagged MSH6 is approximately 1ng/ml as a capture antibody.

[Protocol Download](#)

### ELISA

### *In situ* Proximity Ligation Assay (Cell)



Proximity Ligation Analysis of protein-protein interactions between MSH2 and MSH6. HeLa cells were stained with anti-MSH2 rabbit purified polyclonal 1:1200 and anti-MSH6 mouse monoclonal antibody 1:50. Each red dot represents the detection of protein-protein interaction complex, and nuclei were counterstained with DAPI (blue).

## Gene Information

Entrez GeneID: [2956](#)

GeneBank [NM\\_000179](#)

Accession#:

Protein [NP\\_000170](#)

Accession#:

Gene Name: MSH6

Gene Alias: GTBP,HNPCC5,HSAP

Gene Description: mutS homolog 6 (E. coli)

Description:

Omim ID: [600678](#)

Gene Ontology: [Hyperlink](#)

**Gene Summary:** This gene encodes a protein similar to the MutS protein. In E. coli, the MutS protein helps in the recognition of mismatched nucleotides, prior to their repair. A highly conserved region of approximately 150 aa, called the Walker-A adenine nucleotide binding motif, exists in MutS homologs. The encoded protein of this gene combines with MSH2 to form a mismatch recognition complex that functions as a bidirectional molecular switch that exchanges ADP and ATP as DNA mismatches are bound and dissociated. Mutations in this gene have been identified in individuals with hereditary nonpolyposis colon cancer (HNPCC) and endometrial cancer. [provided by RefSeq]

**Other Designations:** G/T mismatch-binding protein,mutS homolog 6,sperm-associated protein

## Gene Pathway

[Colorectal cancer](#) [Mismatch repair](#) [Pathways in cancer](#)

## Related Disease

[Adenocarcinoma](#) [Adenoma](#) [Adenomatous Polyposis Coli](#) [Anticipation, Genetic](#) [Ataxia telangiectasia](#) [Breast cancer](#) [Breast Neoplasms](#) [Carcinoma](#) [Carcinoma, Papillary](#) [Chromosomal Instability](#) [Colon cancer](#) [Colonic Neoplasms](#) [Colonic Polyps](#) [Colorectal Neoplasms](#) [Colorectal Neoplasms, Hereditary Nonpolyposis](#) [Cystadenocarcinoma, Serous](#) [Disease Progression](#) [Duodenal Neoplasms](#) [Endometrial Neoplasms](#)

... see more