



# SZABO SCANDIC

Part of Europa Biosite

## Produktinformation



Forschungsprodukte & Biochemikalien



Zellkultur & Verbrauchsmaterial



Diagnostik & molekulare Diagnostik



Laborgeräte & Service

Weitere Information auf den folgenden Seiten!  
See the following pages for more information!



### Lieferung & Zahlungsart

siehe unsere [Liefer- und Versandbedingungen](#)

### Zuschläge

- Mindermengenzuschlag
- Trockeneiszuschlag
- Gefahrgutzuschlag
- Expressversand

### SZABO-SCANDIC HandelsgmbH

Quellenstraße 110, A-1100 Wien

T. +43(0)1 489 3961-0

F. +43(0)1 489 3961-7

[mail@szabo-scandic.com](mailto:mail@szabo-scandic.com)

[www.szabo-scandic.com](http://www.szabo-scandic.com)

[linkedin.com/company/szaboscandic](https://www.linkedin.com/company/szaboscandic) 

## GTF2A1 purified MaxPab rabbit polyclonal antibody (D01P) MaxPab®

Catalog # : H00002957-D01P

規格 : [ 100 ug ]

[List All](#)

### Specification

**Product Description:** Rabbit polyclonal antibody raised against a full-length human GTF2A1 protein.

**Immunogen:** GTF2A1 (NP\_056943.1, 1 a.a. ~ 376 a.a) full-length human protein.

**Sequence:**  
 MANSANTNTVPKLYRSVIEDVINDVRDIFLDDGVDEQVLMELKTLWENKL  
 MQSRAVDGFHSEEQQLLLQVQQQHQPQQQQHHHHHHQQAQPQQT  
 PQQAQTTQQLIPASQQATAPQVIVPDSKLIQHMNASNMSAAATAATLALP  
 AGVTPVQQILTNSGQLLQVVRANGAQYIFQPQQSVLQQQVIPQMOP  
 GGVQAPVIQQVLAFLPGGISPQTVIIQPQQILFTGNKTQVIPTTVAAPT  
 AQAQITATGQQQPQAQPAQTQAPLVLQVDGTGDTSSEDEDEEEDYD  
 DDEEEDKEKDGAEDGQVEEPLNSEDDVSDEEGQELFDTENVVCQYD  
 KIHRSKNKWKFLKDGIMNLNGRDYIFSKAIGDAEW

**Host:** Rabbit

**Reactivity:** Human

**Quality Control Testing:** Antibody reactive against mammalian transfected lysate.

**Storage Buffer:** In 1x PBS, pH 7.4

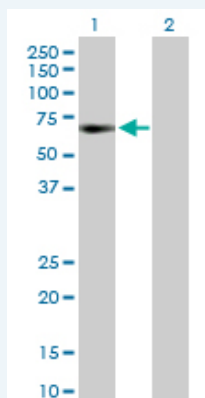
**Storage Instruction:** Store at -20°C or lower. Aliquot to avoid repeated freezing and thawing.

**MSDS:**  [Download](#)

**Datasheet:**  [Download](#)

### Applications

#### Western Blot (Transfected lysate)



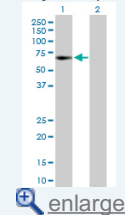
Western Blot analysis of GTF2A1 expression in transfected 293T cell line ([H00002957-T02](#)) by GTF2A1 MaxPab polyclonal antibody.


Lane 1: GTF2A1 transfected lysate(41.50 KDa).

Lane 2: Non-transfected lysate.

### Application Image

Western Blot (Transfected lysate)



 [enlarge](#)

 [Protocol Download](#)

## Gene Information

---

**Entrez GeneID:** [2957](#)

---

**GeneBank  
Accession#:** [NM\\_015859.2](#)

---

**Protein  
Accession#:** [NP\\_056943.1](#)

---

**Gene Name:** GTF2A1

---

**Gene Alias:** MGC129969,MGC129970,TF2A1,TFIIA

---

**Gene  
Description:** general transcription factor IIA, 1, 19/37kDa

---

**Omim ID:** [600520](#)

---

**Gene Ontology:** [Hyperlink](#)

---

**Other  
Designations:** TFIIA alpha, p55,TFIIA alpha, p55, isoform 1,general transcription factor IIA, 1 (37kD and 19kD subunits),glucose regulated protein, 58kD pseudogene

---

## Gene Pathway

---

[Basal transcription factors](#)

## Related Disease

---

[Breast cancer](#) [Breast Neoplasms](#) [Genetic Predisposition to Disease](#) [Stomach Neoplasms](#)

---

[服務條款](#) | [隱私權政策](#) | [著作及商標](#) | [網站地圖](#)

©2016 亞諾法生技股份有限公司 Abnova Corporation. 版權所有.